

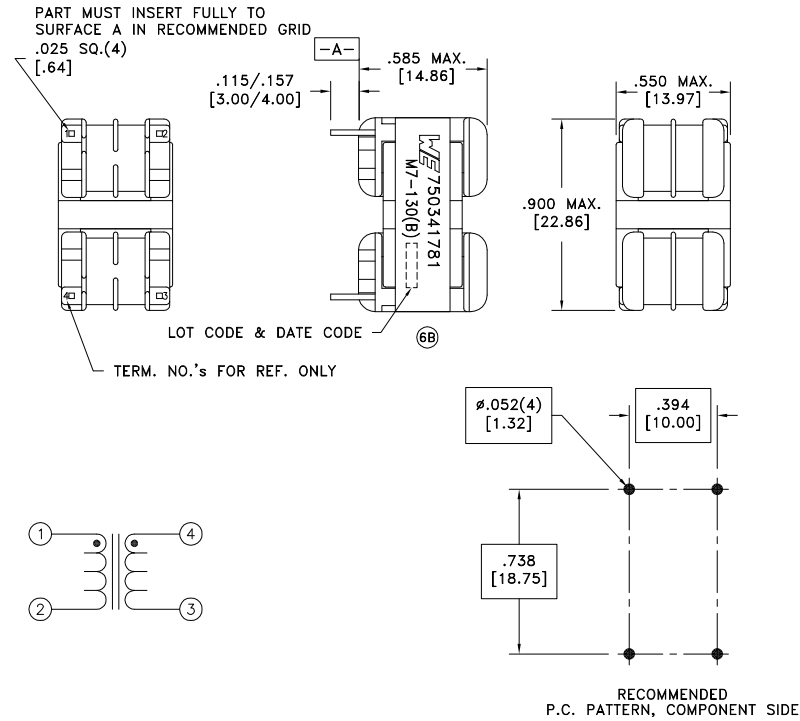
CUSTOMER TERMINAL	RoHS	LEAD(Pb)-FREE
Sn96%, Ag4%	Yes	Yes

more than you expect



ELECTRICAL SPECIFICATIONS @ 25°C unless otherwise noted:

PARAMETER	TEST CONDITIONS	VALUE
D.C. RESISTANCE	1-2 @20°C	3.03 ohms ±10%
D.C. RESISTANCE	4-3 @20°C	3.03 ohms ±10%
INDUCTANCE	1-2 10kHz, 50mVAC, Ls	70.0 +60%/-30% mH
INDUCTANCE	4-3 10kHz, 50mVAC, Ls	70.0 +60%/-30% mH
SATURATION CURRENT	1-4 tie(2+3), roll off 20% from initial	1.0A
LEAKAGE INDUCTANCE	1-4 tie(2+3), 10kHz, 50mVAC, Ls	2.0mH min.
DIELECTRIC	1-4 2514VAC, 1 second	2011VAC, 1 minute
DIELECTRIC	1-CORE tie(1+4), 1875VAC, 1 second	1500VAC, 1 minute
URNS RATIO	(1-2):(4-3)	1:1, ±2%



Ⓒ

GENERAL SPECIFICATIONS:

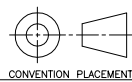
OPERATING TEMPERATURE RANGE: -40°C to +125°C including temp rise.

Designed to meet UL Recognized Insulation System M7-130(B), E106391.

- Ⓒ Current Rating: 0.38A
- Ⓒ Designed to comply with UL 1993 for 347VACrms or VDC.
- Ⓒ Designed to comply with UL 840 for 347VACrms or VDC for Overvoltage Category II and Pollution Degree II.

Wire insulation & RoHS status not affected by wire color.  
Wire insulation color may vary depending on availability.

REV.	DATE	Packaging Specifications
6C	11/15	Method: Tray PKG-0822 www.we-online.com/midcom
6B	12/14	
6A	5/13	SEE REVISION SHEET FOR REVISION LEVEL



Tolerances unless otherwise specified:  
Angles: ±1° Decimals: ±.005 [.13]  
Fractions: ±1/64 Footprint: ±.001 [.03]

This drawing is dual dimensioned. Dimensions in brackets are in millimeters.

DRAWING TITLE

**CMC**

eiSos p/n: 750341781

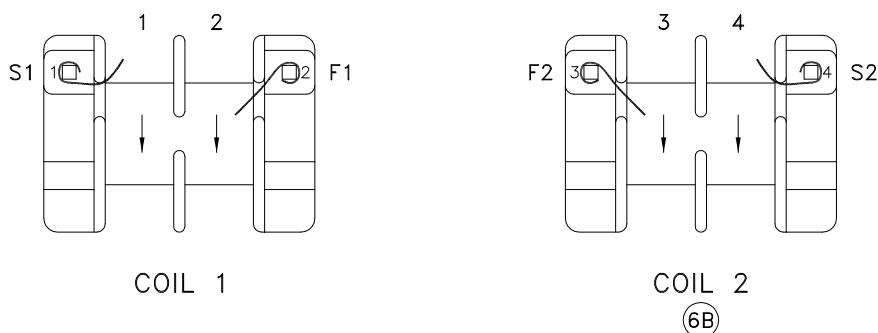
PART NO.

**750341781**



SPECIFICATION SHEET 1 OF 2

# INFORMATION SHEET



## WINDING INFORMATION

ITEM	COIL 1	COIL 2	
WINDING SEQUENCE	1	2	
WIRE WIND DIRECTION	CCW	CCW	
WINDING STYLE	PRECISION	PRECISION	
WIRE TYPE	32H	32H	
TURNS (+/-)	167	167	
BOBBIN SECTION	1&2	3&4	(6B)
LAYERS	-	-	
WINDING WIDTH (mm)	3.12x2	3.12x2	
INSULATION TAPE (LAYERS)	-	-	
D.C. RESISTANCE (OHMS @25°C)	3.329 max.	3.329 max.	
Q (MIN.)	-	-	
VuSEC (MAX.) @100°C	-	-	
Vpeak, COIL*	-	-	
Isat (MIN.) @100°C**	-	-	

\*Please refer to Guidelines for the Usage of Components, Document No 171HM0002-1.

\*\*DC bias applied to cause 20% drop from initial inductance.

## BILL OF MATERIAL

PART	DESCRIPTION	SUPPLIER	UL FILE NUMBER
BOBBIN	EE16.5, TH NYLON 70G33L	PIN SHINE INDUSTRIAL	E41938(M)
WIRE	32 AWG HEAVY POLY, 155°C MW80C	ELEKTRISOLA	E143312 E63382
TAPE	#1351-1	3M	E17385
CORE	EE16.5-1 FERRITE (.64mm Ref. GAP) BSAT, MIN. @100°C = 300mT (Ae MIN. = 35.94mm <sup>2</sup> )	ACME, A05 TDG, TL5	-

## MECHANICAL

PART	DESCRIPTION
PACKAGING	TRAY QTY: 63, BOX QTY: 441
WEIGHT	10.68g/piece
TERMINAL SIZE	0.025" ±0.005 [0.64mm ±.127] sq. MIN. DRILL HOLE DIAMETER 1.32mm
PULL FORCE	2.0kg min.
COPLANARITY	n/a (thru hole device)

STORAGE TEMPERATURE RANGE: -40°C to +125°C.

WURTH ELECTRONICS MIDCOM INC.		PART# 750341781
PART NO. <b>750341781</b>	REV. 6C	
SPECIFICATION SHEET 2 OF 2		