

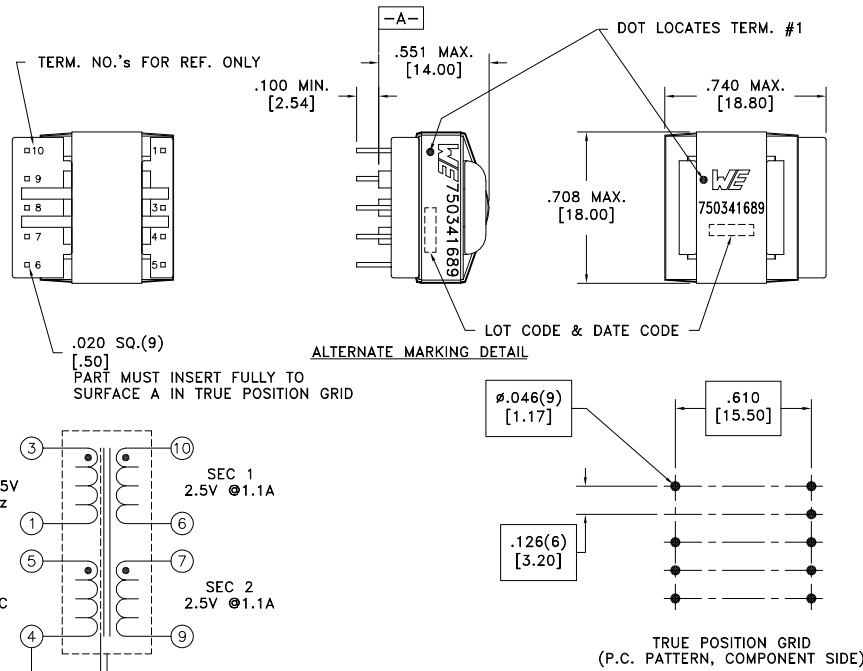
CUSTOMER TERMINAL	RoHS	LEAD(Pb)-FREE
Sn96%, Ag4%	Yes	Yes

more than you expect



ELECTRICAL SPECIFICATIONS @ 25°C unless otherwise noted:

PARAMETER	TEST CONDITIONS	VALUE
D.C. RESISTANCE	3-1 @20°C	3.86 ohms max.
D.C. RESISTANCE	5-4 @20°C	0.400 ohms max.
D.C. RESISTANCE	7-9 @20°C	0.020 ohms max.
D.C. RESISTANCE	10-6 @20°C	0.020 ohms max.
INDUCTANCE	3-1 50kHz, 100mVAC, Ls	1.60mH ±10%
LEAKAGE INDUCTANCE	3-1 tie(4+5, 6+7+9+10), 100kHz, 100mVAC, Ls	60uH max.
DIELECTRIC	1-10 tie(3+4, 6+7), 3500VAC, 1 second	-
DIELECTRIC	3-Core 2500VAC, 1 second	-
DIELECTRIC	10-Core tie(6+7), 1500VAC, 1 second	-
DIELECTRIC	3-10 tie(6+7), 500VAC, 1 second	-
TURNS RATIO	(3-1):(5-4)	7.056:1, ±2%
TURNS RATIO	(3-1):(10-6)	31.75:1, ±2%
TURNS RATIO	(3-1):(7-9)	31.75:1, ±2%



Terminals 1, 4 & 5 are sleeved.

GENERAL SPECIFICATIONS:

OPERATING TEMPERATURE RANGE: -40°C to +125°C.

Designed to comply with the following requirements as defined by IEC60950-1, EN60950-1, UL60950-1/CSA60950-1 and AS/NZS60950.1:

- Reinforced insulation for a working voltage of 400VDC.

Wire insulation & RoHS status not affected by wire color.
Wire insulation color may vary depending on availability.

REV.	DATE	Packaging Specifications Method: Tray PKG-0887 www.we-online.com/midcom		Tolerances unless otherwise specified: Angles: ±1° Fractions: ±1/64 Decimals: ±.005 [.13] Footprint: ±.001 [.03]	DRAWING TITLE TRANSFORMER	PART NO. 750341689
6C	3/14					
6B	12/13					
6A	1/13	SEE REVISION SHEET FOR REVISION LEVEL		This drawing is dual dimensioned. Dimensions in brackets are in millimeters.	eiSos p/n: 750341689	SPECIFICATION SHEET 1 OF 1

