

CONNECTOR PRODUCTS

Pulse Connectors

Pulse is a leader in the design and manufacturing of RJ45, RJ11 and keystone jack CAT5e/6 connectors. Pulse offers an extensive range of connectors that support a wide variety of applications: networking (SFP+ and SFP cage and connector), PC peripheral devices (USB), and telecommunications (IDC connector, patch panel).

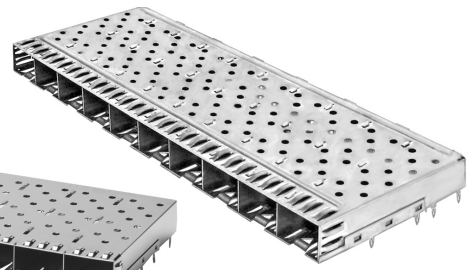
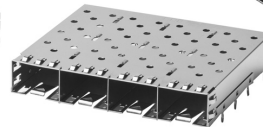
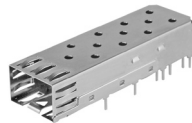
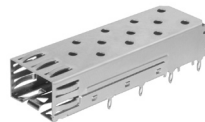
Pulse offers design support for OEM and ODM customers which reduces development time and ensures seamless integration of design, development, production, and time-to-market. With manufacturing sites throughout Asia and a global network of sales offices. Pulse understands the importance of performance and time-to-market and provides excellent worldwide logistics and technical support for local and international customers.

For more information and detailed product data sheets, go to the Pulse website at <http://www.pulseelectronics.com/connectors> or contact your local Pulse sales representative.



SFP+ Cage

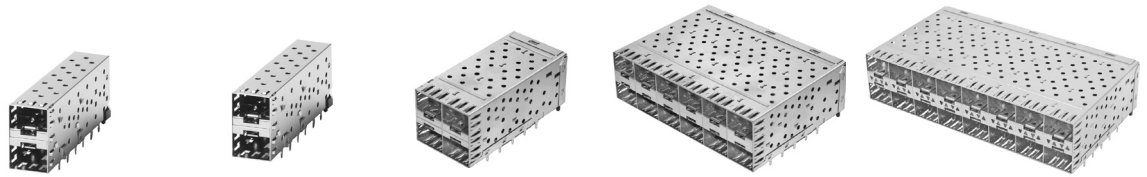
Part Number	SFPP-1130-L	SFPP-1110-L	SFPLP001-L
Number of Ports	1X1	1X1	1X1
Connector Type	SFP+ Cage	SFP+ Cage	Light Pipe for SFP+/SFP Cage
Package	Through Hole	Press Fit	—
For PCI (1° tilt) Option	For PCI	For PCI	Not for PCI



SFP Single and Ganged Cages and SFP Connector

Part Number	SFPC-2000-L	SFP0-1000-L	SFP0-1010-L	E81M0-WCYJEB-L	SFPCAGE006-L
Number of Ports	1X1	1X1	1X1	1X4	1X10
Connector Type	SFP Connector	SFP Cage	SFP Cage	SFP Cage	SFP Cage
Package	SMT	Press Fit	THT	Press Fit	Press Fit
Solder Temperature	255°C to 265°C 5-10 Seconds	—	255°C to 265°C 5-10 Seconds	—	—
Contact Mating Area Plating	Gold 15 μ"	—	—	—	—

CONNECTOR PRODUCTS



SFP 2XN Stacked

Part Number	SFP0-3047-L	SFP0-3040-L	SFP0-3030-L	SFP0-3013-L	SFP0-3000-L
Number of Ports	2X1	2X1	2X2	2X6	2X8
Connector Type	SFP Cage & Connector	SFP Cage & Connector	SFP Cage & Connector	SFP Cage & Connector	SFP Cage & Connector
Package	Press Fit	Press Fit	Press Fit	Press Fit	Press Fit
Light Pipe Option	Without Light Pipes	With Light Pipes	With Light Pipes	Without Light Pipes	With Light Pipes



XFP Cage

Common Features				
Number of Ports		1X1	1X1	1X1
PCB Mount Angle		Side Entry	Side Entry	Side Entry
Features				
Part Number		XFP0-3400-L	XFP0-3410-L	XFP0-3420-L
Cage Type		XFP Cage	XFP Cage	XFP Cage
Package		Press Fit	Press Fit	Press Fit
Package Height (mm)		12.9	15.2	22.2



RJ Connectors, Single Port, Top Entry, No Shield

Part Number	E5266-000032-L	E5288-300042-L	E5244-7U0BS4-L	E5266-7007S2-L	E5288-P00B74-L	E5288-7007S2-L
Number of Positions	6	8	4	6	8	8
Number of Contacts	6	8	4	6	8	8
Package	THT	THT	SMT	SMT	SMT	SMT
Panel Stop	YES	NO	YES	YES	NO	YES
Contact Mating Area Plating	Gold 6 μ"	Gold 6 μ"	Gold 30 μ"	Gold 6 μ"	Gold 30 μ"	Gold 6 μ"
Solder Temperature	230°C to 240°C 5-10 Seconds	230°C to 240°C 5-10 Seconds	255°C to 265°C 5-10 Seconds	255°C to 265°C 5-10 Seconds	255°C to 265° 5-10 Seconds	255°C to 265°C 5-10 Seconds

CONNECTOR PRODUCTS



RJ Connectors, Single Port, Top Entry, Shielded

Part Number	E5288-320044-L	E5288-320B45-L	E5288-RA0C04-L
Number of Positions	8	8	8
Number of Contacts	8	8	8
Package	THT	THT	THT
Shield EMI Tabs	YES	YES	NO
LED Option	No LEDs	No LEDs	Yellow & Green
Contact Mating	Gold 30 μ"	Gold 50 μ"	Gold 30 μ"
Area Plating	230°C to 240°C	255°C to 265°C	230°C to 240°C
Solder Temperature	5-10 Seconds	5-10 Seconds	5-10 Seconds



RJ Connectors, Multiport, Top Entry

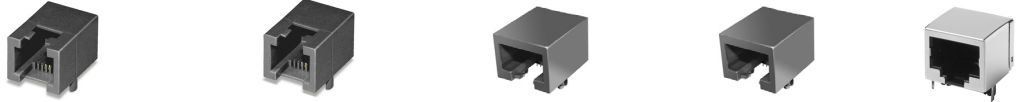
Part Number	E5288-30C142-L	E5288-32C142-L	E5288-32G142-L	E5288-Y CCB02-L
Number of Positions	8	8	8	8
Number of Contacts	8	8	8	8
Number of Ports	1X4	1X4	1X8	2X4
Package	THT	THT	THT	THT
Shield Option	No Shield	Nickel Shield	Nickel Shield	Nickel Shield
Contact Mating	Gold 6 μ"	Gold 6 μ"	Gold 6 μ"	Gold 6 μ"
Area Plating	230°C to 240°C	230°C to 240°C	230°C to 240°C	230°C to 240°C
Solder Temperature	5-10 Seconds	5-10 Seconds	5-10 Seconds	5-10 Seconds



RJ Connectors, Single Port, Side Entry, Surface Mount (SMT)

Part Number	E5344-HH05Y2-L	E5366-FH05Y4-L	E5388-EH05Y2-L	E5388-UH05V5-L
Number of Positions	4	6	8	8
Number of Contacts	4	6	8	8
Tab	Down	Down	Down	Down
Shield Option	No Shield	No Shield	No Shield	Nickel Shield
Contact Mating	Gold 6 μ"	Gold 30 μ"	Gold 6 μ"	Gold 50 μ"
Area Plating	255°C to 265°C	255°C to 265°C	255°C to 265°C	255°C to 265°C
Solder Temperature	5-10 Seconds	5-10 Second	5-10 Seconds	5-10 Seconds

CONNECTOR PRODUCTS



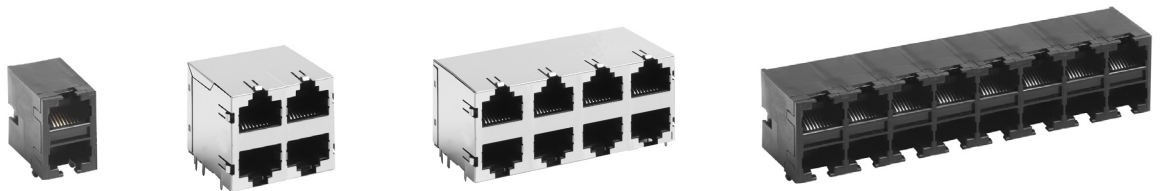
RJ Connectors, Single Port Side Entry, Through Hole (THT)

Part Number	E5344-000012-L	E5564-00L012-L	E5388-E00212-L	E5908-000L32-L	E5908-150122-L
Number of Positions	4	6	8	10	10
Number of Contacts	4	4	8	8	8
Tab	Down	Up	Down	Down	Down
Shield Option	No Shield	No Shield	No Shield	No Shield	Nickel Shield
Contact Mating Area Plating	Gold 6 μ "	Gold 6 μ "	Gold 6 μ "	Gold 6 μ "	Gold 6 μ "
Solder Temperature	230°C to 240°C 5-10 Seconds	230°C to 240°C 5-10 Seconds	230°C to 240°C 5-10 Seconds	255°C to 265°C 5-10 Seconds	230°C to 240°C 5-10 Seconds



RJ Connectors, Multi-Port, 1XN, Side Entry, Through Hole (THT)

Part Number	E5608-00A0Q2-L	E5608-00C062-L	E5908-25C5Q2-L	E5908-15A2J4-L
Number of Positions	10	10	10	10
Number of Contacts	8	8	8	8
Number of Ports	1X2	1X4	1X4	1X2
Tab	Down	Down	Down	Down
Shield Option	No Shield	No Shield	Nickel Shield	Nickel Shield
Contact Mating Area Plating	Gold 6 μ "	Gold 6 μ "	Gold 6 μ "	Gold 30 μ "
Solder Temperature	230°C to 240°C 5-10 Seconds	230°C to 240°C 5-10 Seconds	255°C to 265°C 5-10 Seconds	230°C to 240°C 5-10 Seconds



RJ Connectors, Multi-Port, 2XN, Side Entry, Through Hole (THT)

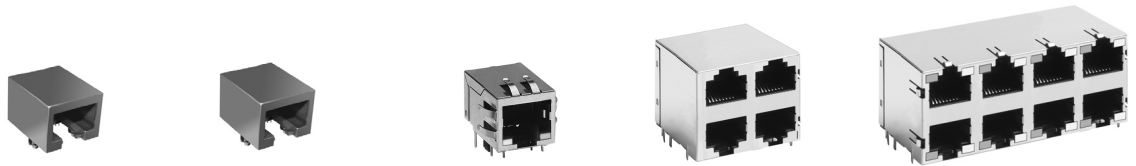
Part Number	E5908-0T0343-L	E5908-17A133-L	E5908-57C122-L	E5908-5VC153-L	E5908-0TG0U4-L
Number of Positions	10	10	10	10	10
Number of Contacts	8	8	8	8	8
Number of Ports	2X1	2X2	2X4	2X4	2X8
Shield Option	No Shield	Nickel Shield	Nickel Shield	Nickel Shield	No Shield
Contact Mating Area Plating	Gold 15 μ "	Gold 15 μ "	Gold 6 μ "	Gold 15 μ "	Gold 30 μ "
Solder Temperature	255°C to 265°C 5-10 Seconds	255°C to 265°C 5-10 Seconds	230°C to 240°C 5-10 Seconds	255°C to 265°C 5-10 Seconds	230°C to 240°C 5-10 Seconds

CONNECTOR PRODUCTS



RJ Connectors, Side Entry with LEDs, Through Hole (THT)

Part Number	E5J88-10L054-L	E5J88-34L022-L	E5J88-44AJ22-L	E5J88-14C0B4-L	E5J88-A4L2F2-L	E5J88-C4C2B5-L
Number of Positions	8	8	8	8	8	8
Number of Contacts	8	8	8	8	8	8
Number of Ports	1X1	1X1	1X2	1X4	2X1	2X4
LED Option	Yellow & Green	Green & Yellow	Green/Yellow & Green/Yellow	Yellow & Green	Green & Green	Green & Yellow
Tab	Up	Up	Up	Up	—	—
Shield Option	No Shield	Nickel Shield	Nickel Shield	Nickel Shield	Nickel Shield	Nickel Shield
Contact Mating Area Plating	Gold 30 μ"	Gold 6 μ"	Gold 6 μ"	Gold 30 μ"	Gold 6 μ"	Gold 30 μ"
Solder Temperature	230°C to 240°C 5-10 Seconds	230°C to 240°C 5-10 Seconds	255°C to 265°C 5-10 Seconds	230°C to 240°C 5-10 Seconds	255°C to 265°C 5-10 Seconds	230°C to 240°C 5-10 Seconds



RJ Connectors, CAT. 5, Through Hole (THT)

Part Number	E6588-200124-L	E6588-600P22-L	E6588-WA0B44-L	E6588-G5P124-L	E6588-GARUA3-L
Number of Positions	8	8	8	8	8
Number of Contacts	8	8	8	8	8
Number of Ports	1X1	1X1	1X1	2X2	2X4
LED Option	No LEDs	Green & Yellow	Green/Yellow & Green	No LEDs	Yellow & Green
Shield Option	No Shield	No Shield	Nickel Shield	Nickel Shield	Nickel Shield
Contact Mating Area Plating	Gold 30 μ"	Gold 6 μ"	Gold 30 μ"	Gold 30 μ"	Gold 15 μ"
Solder Temperature	230°C to 240°C 5-10 Seconds	230°C to 240°C 5-10 Seconds	230°C to 240°C 5-10 Seconds	255°C to 265°C 5-10 Seconds	230°C to 240°C 5-10 Seconds



Patch Panel & Keystone Jack

Part Number	E61KS-4002J5-L	E61KS-40A205-L	E6164-YWABJ4-L	E48AM-M3LY35-L
Number of Ports	—	—	—	24 Ports
Number of Positions	8	8	6	—
Speed	CAT 6	CAT 6	CAT 3	CAT 6