

SAW Filter 256.0MHz
Part No: MP03515

Model: TB0758A
Rev. No: 1

A. MAXIMUM RATING:

1. Operating Temperature: -40°C ~ +90°C
2. Storage Temperature: -40°C ~ +90°C
3. Input power: 20dBm

B. CHARACTERISTICS:

Ambient Temperature: 25°C

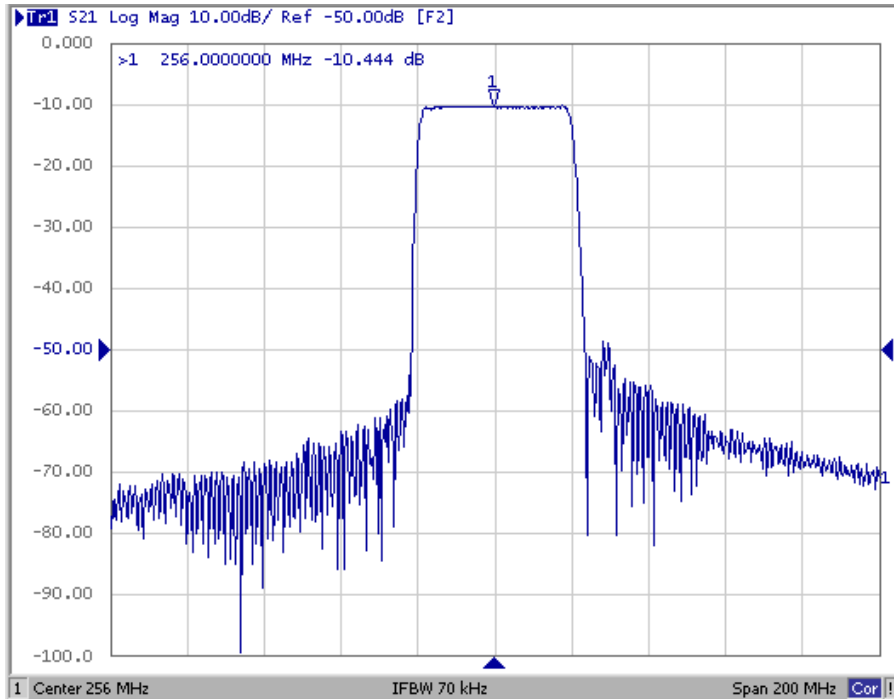
Characteristics	Value			Note
	Min.	Typ.	Max.	
Center frequency Fc MHz	-	256	-	-
Minimum Insertion loss IL dB	-	10.2	13.0	-
1dB BW MHz	34	38	-	
40dB BW MHz	-	45	50.0	
Attenuation (Reference to Minimum Insertion loss)				
225MHz dB	40	51	-	-
290MHz dB	40	47	-	-
Temp Coefficient ppm/K	-	-94	-	-
Matching: 1. The input of the filter will be matched to 50Ω 2. The output of the filter will be matched to 50Ω				

SAW Filter 256.0MHz
Part No: MP03515

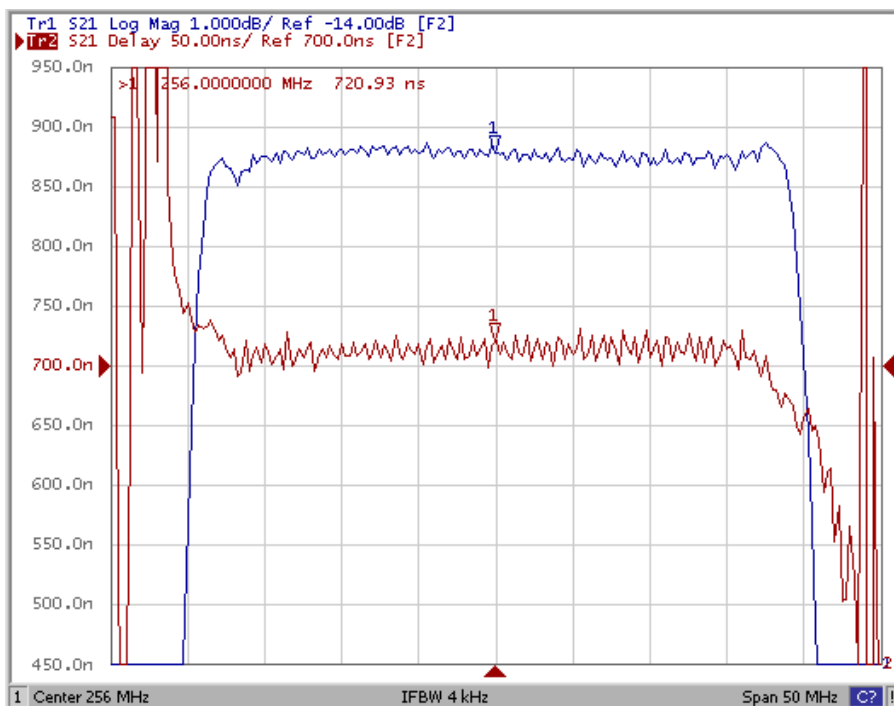
Model: TB0758A
Rev. No: 1

C. FREQUENCY CHARACTERISTICS:

1. Wide band Response: (span 200MHz)



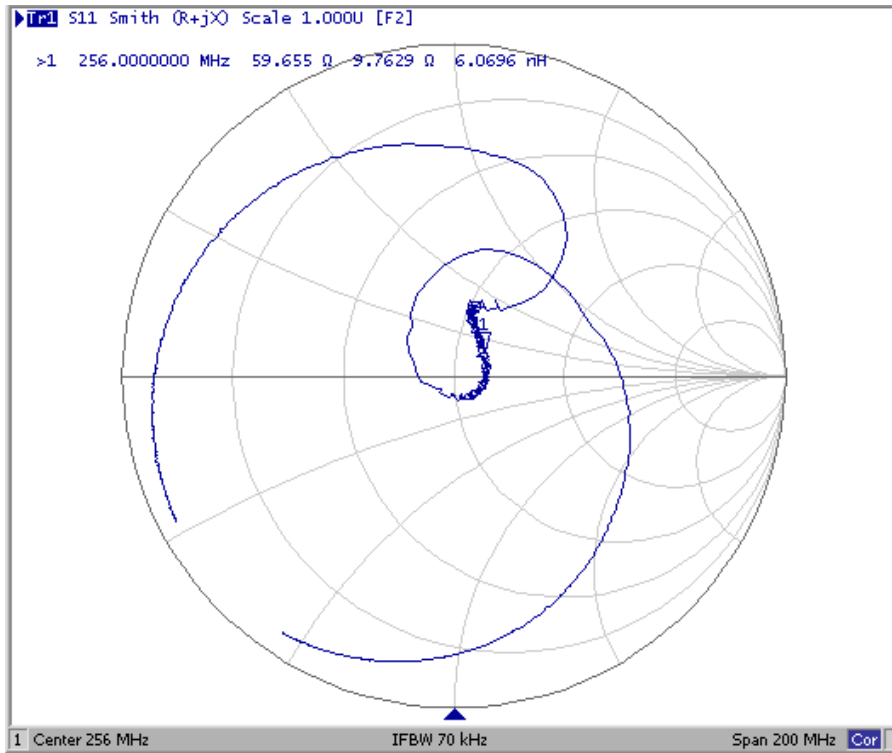
2. Pass band Response and Group Delay Variation: (span 50MHz)



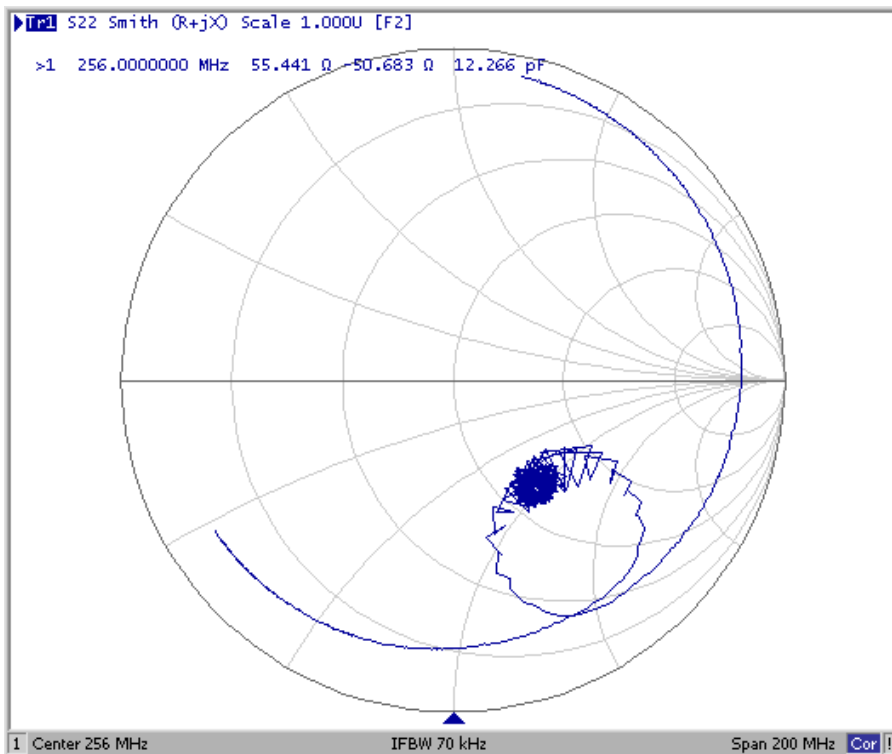
SAW Filter 256.0MHz
Part No: MP03515

Model: TB0758A
Rev. No: 1

3. S11 Smith-Chart: (span 200MHz)



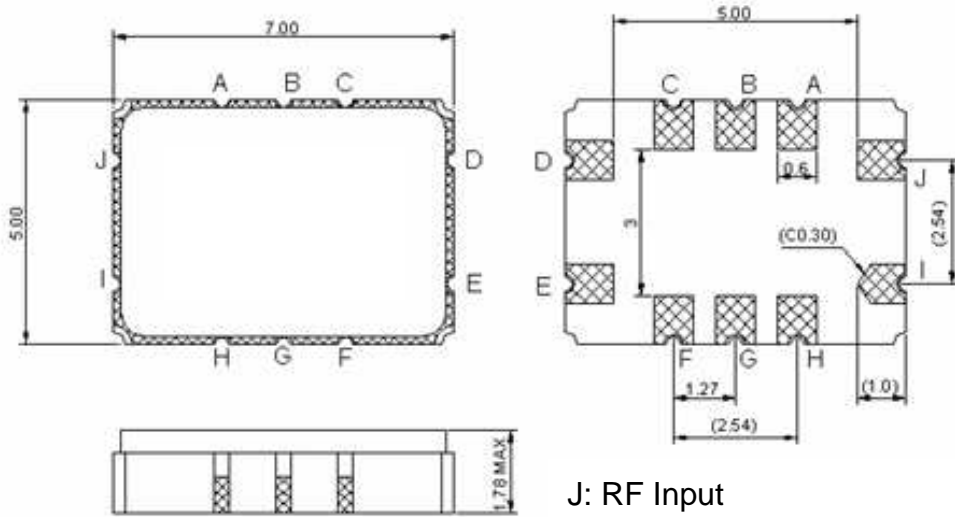
4. S22 Smith-Chart: (span 200MHz)



SAW Filter 256.0MHz
Part No: MP03515

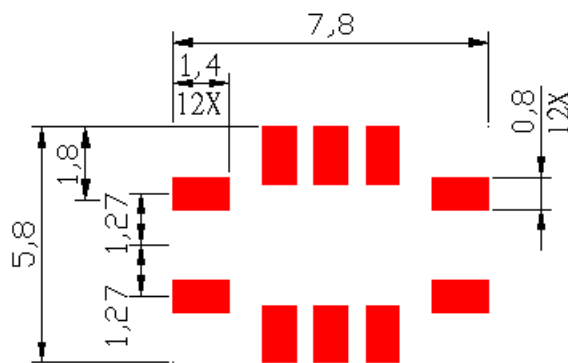
Model: TB0758A
Rev. No: 1

D. OUTLINE DRAWING:

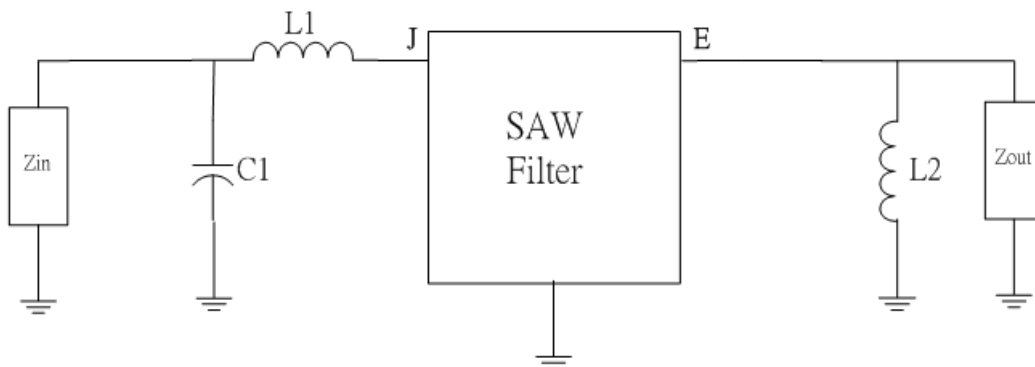


J: RF Input
 E: RF Output
 H, G, F, D, C, B, A, I: Ground
 Unit: mm

E. PCB FOOTPRINT:



F. MATCHING CIRCUIT:



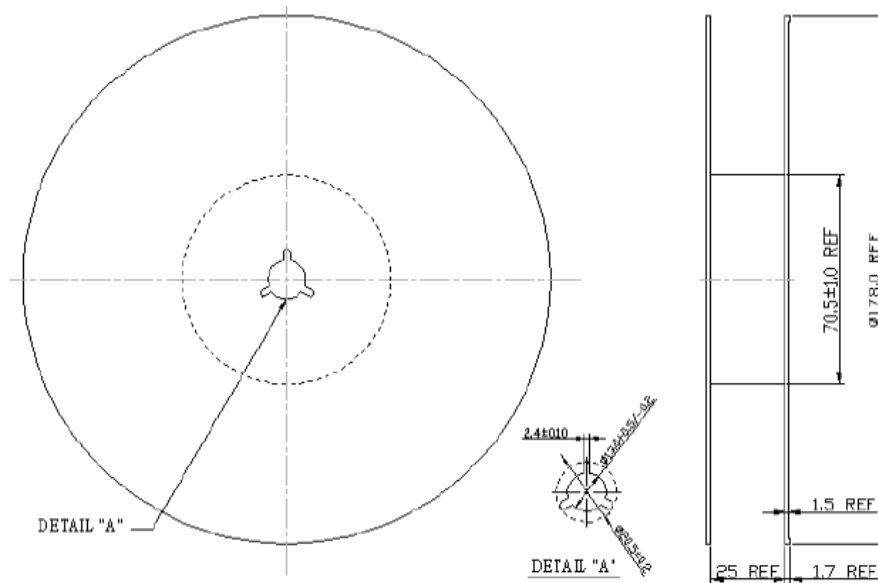
$$Z_{IN} = Z_{OUT} = 50\Omega, L1 = 22nH, C1 = 26pF, L2 = 33nH$$

SAW Filter 256.0MHz
Part No: MP03515

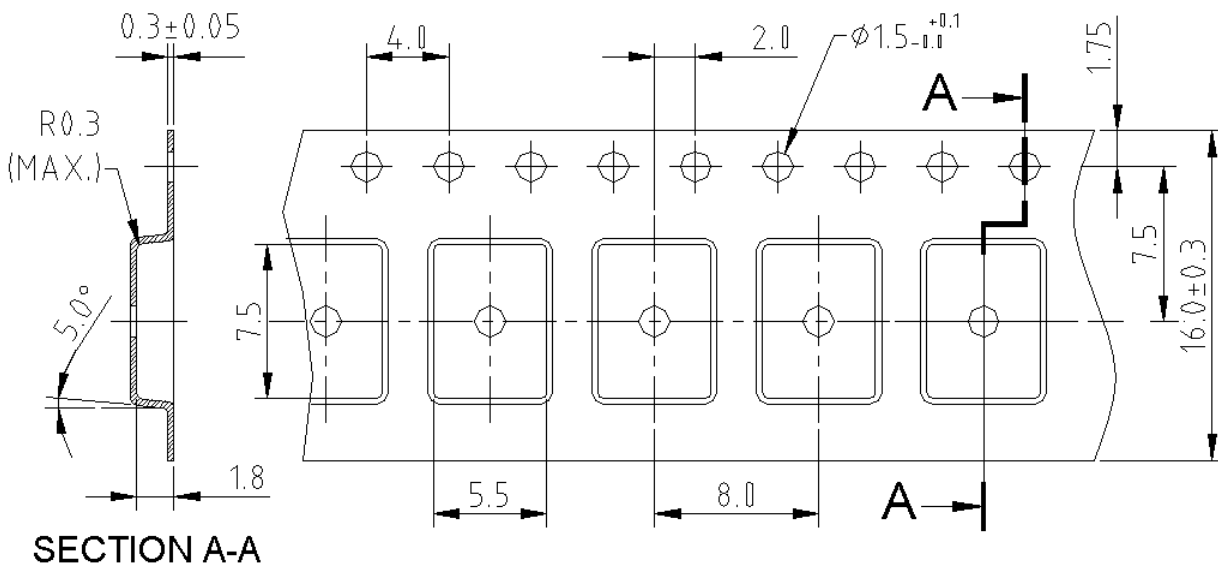
Model: TB0758A
Rev. No: 1

G. PACKING:

1. REEL DIMENSION:



2. TAPE DIMENSION:



SAW Filter 256.0MHz
Part No: MP03515

Model: TB0758A
Rev. No: 1

H. RECOMMENDED REFLOW PROFILE:

