

DATE	REVISIONS	REV
3-18-98	E.C.N. #10BRDR. & REDRAWN./	A
7-13-98	E.C.N. #10443./ CORRECTED FLAT TO BE ON IR SIDE.	B

DRAWING NUMBER SSL-LX5099IEW	REV B
---------------------------------	----------

ELECTRO-OPTICAL CHARACTERISTICS $T_A=25^{\circ}\text{C}$ $I_f=20\text{mA}$

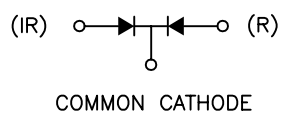
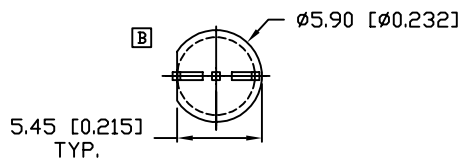
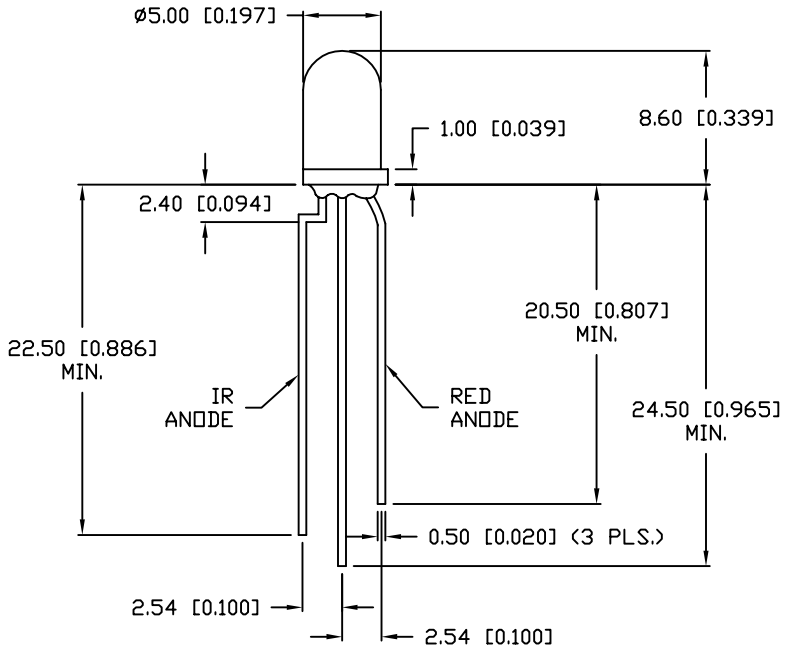
PARAMETER	MIN	TYP	MAX	UNITS	TEST COND
PEAK WAVELENGTH		940 (IR) 635 (RED)		nm	
FORWARD VOLTAGE(IR/R)		1.4/2.0	1.75/2.5	V_f	
REVERSE VOLTAGE	5.0			V_r	$I_r=100\mu\text{A}$
RADIANT INTENSITY (IR)	3.2		12.5	mW/Sr	$I_f=20\text{mA}$
AXIAL INTENSITY (R)	20	55	90	μcd	$I_f=20\text{mA}$
VIEWING ANGLE		60		2x theta	
EMITTED COLOR:	RED				
EPOXY LENS FINISH:	MILKY WHITE DIFFUSED				

LIMITS OF SAFE OPERATION AT 25°C

PARAMETER	COLORS	MAX	UNITS
PEAK FORWARD CURRENT*	(IR/R)	1200/150	mA
STEADY CURRENT	(IR/R)	50/30	mA
POWER DISSIPATION		105	mW
DERATE FROM 25°C		-1.2	mW/°C
OPERATING, STORAGE TEMP.		-40 TO +85	°C
SOLDERING TEMP. 2.0mm FROM BODY		+260	°C
			3 SEC. MAX

* $t < 10\mu\text{S}$

RELIABILITY NOTE
OUR MANY YEARS OF EXPERIENCE DATA ACCUMULATION INDICATE THAT SOLDER HEAT IS A MAJOR CAUSE OF EARLY AND FUTURE FAILURE. PLEASE PAY ATTENTION TO YOUR SOLDERING PROCESS.



UNLESS OTHERWISE SPECIFIED TOLERANCE IS $\pm 0.25\text{mm}$ ($\pm 0.010''$)

		290 E. HELLEN ROAD PALATINE, ILLINOIS 60067 (847) 359-2790	
		<small>CONFIDENTIAL INFORMATION</small> <small>THE INFORMATION CONTAINED IN THIS DOCUMENT IS THE PROPERTY OF LUMEX INCORPORATED. EXCEPT AS SPECIFICALLY AUTHORIZED IN WRITING BY LUMEX INCORPORATED, THE HOLDER OF THIS DOCUMENT SHALL KEEP ALL INFORMATION CONTAINED HEREIN CONFIDENTIAL AND SHALL PROTECT SAME IN WHOLE OR IN PART FROM DISCLOSURE AND DISSEMINATION TO ALL THIRD PARTIES.</small>	
DATE: 9-30-97	DWN: DU	CHK'D:	APPD: BC
SCALE: N/A			
T-5mm (T-1 3/4) LED BI-POLOR IR/RED, COMMON CATHODE.			
PAGE 1 OF 1	DRAWING NUMBER SSL-LX5099IEW	REV B	