

VOLTAGE CONTROLLED OSCILLATOR

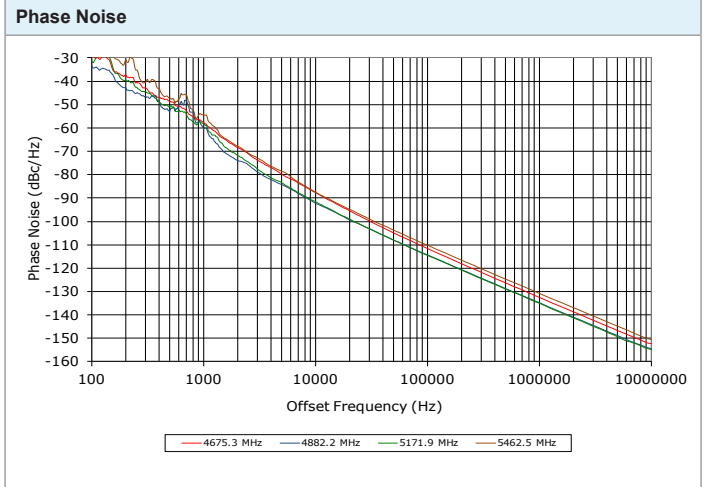
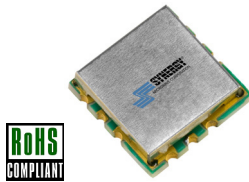
SURFACE MOUNT MODEL: DCO473542-5

OPTIMIZED BANDWIDTH

4730 - 5420 MHz

FEATURES:

- ▶ Miniatures Size, Surface Mount (0.3"x0.3")
- ▶ Exceptional Phase Noise Performance
- ▶ Fast Tuning
- ▶ Planar Resonator Construction



SPECIFICATIONS

Frequency	4730 - 5420 MHz						
Tuning Voltage	See below.						
Bias Voltage	+5.0 VDC @ 28 mA (Max.)						
Output Power	-1 dBm (Min.)						
Tuning Sensitivity	30 - 45 MHz/V (Typ.)						
Output Impedance	50 Ohms (Nom.)						
Harmonic Suppression	20 dB (Typ.)						
Frequency Pulling	40 MHz (Typ. @ 1.75:1 VSWR)						
Frequency Pushing	5 MHz/V (Typ.)						
Tuning Port Capacitance	25 pF (Typ.)						
Typical Phase Noise	<table border="1"> <tr> <th>Offset</th> <th>dBc/Hz</th> </tr> <tr> <td>10 kHz</td> <td>-90</td> </tr> <tr> <td>100 kHz</td> <td>-112</td> </tr> </table>	Offset	dBc/Hz	10 kHz	-90	100 kHz	-112
	Offset	dBc/Hz					
	10 kHz	-90					
100 kHz	-112						
Operating Temperature Range	-40 to +85 °C						

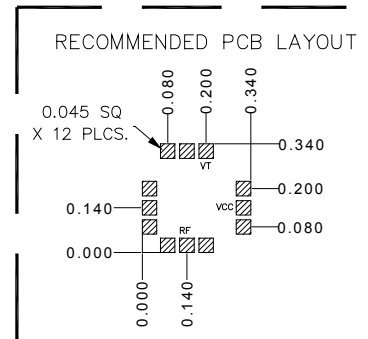
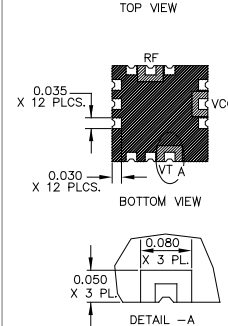
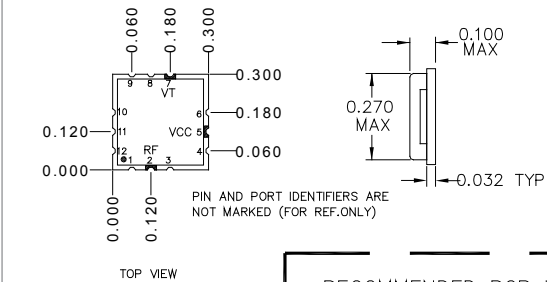
Guaranteed Tuning Specifications

Tuning Voltage (V)	Frequency (MHz)
0.5	4730 (Max.)
5	4790 (Min.)
8	4870 (Min.)
12	5030 (Min.)
15	5150 (Min.)
18	5300 (Min.)
22	5420 (Min.)

Absolute Maximum Ratings

Storage Temp. Range	-55 to +125 °C
Bias Voltage	+5.5 V
Tuning Voltage	+25 V
DC Voltage Applied to RF Out	± 25 V

Package # 343



PACKAGE MOUNTING: SEE APPLICATION NOTE AN7300 & AN7302

TOLERANCES ON THREE DECIMAL PLACES= ± 0.015

DIMENSIONS ARE IN INCHES. ALL UNLABELED PINS TO BE GROUND.

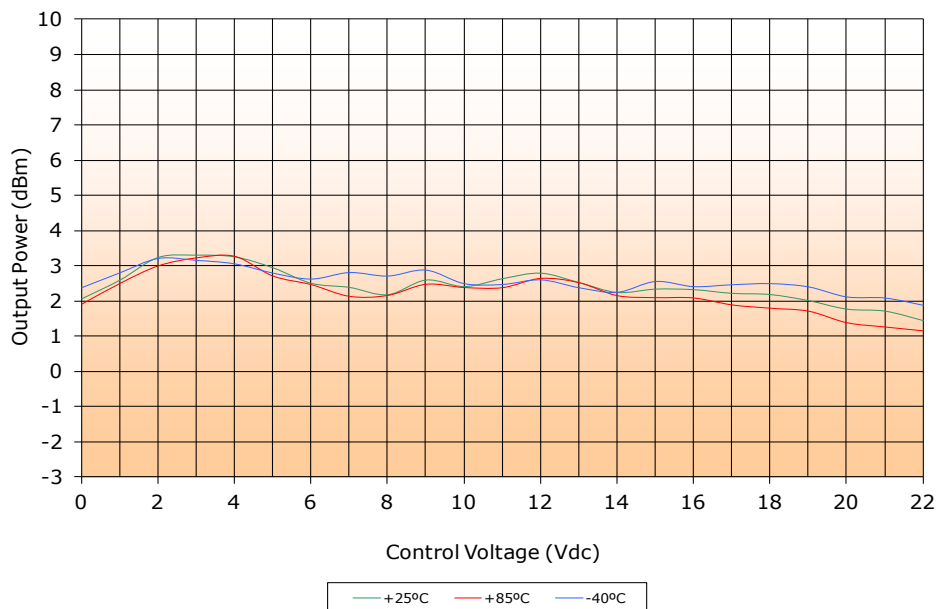
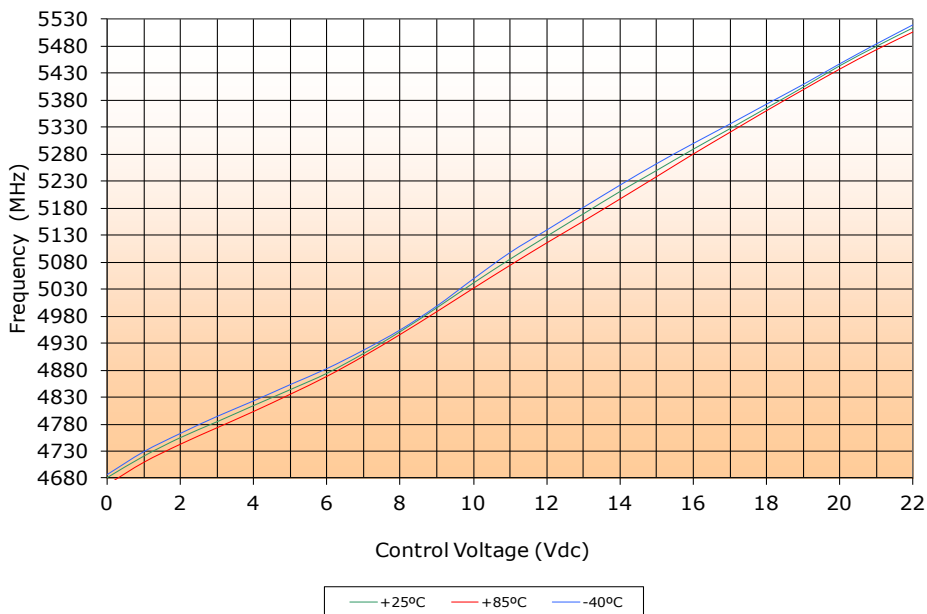
VOLTAGE CONTROLLED OSCILLATOR

SURFACE MOUNT MODEL: DCO473542-5

OPTIMIZED BANDWIDTH

4730 - 5420 MHz

PERFORMANCE PLOTS



VOLTAGE CONTROLLED OSCILLATOR

SURFACE MOUNT MODEL: DCO473542-5

OPTIMIZED BANDWIDTH

4730 - 5420 MHz

PERFORMANCE PLOTS

