



SP6019D

Synchronous Rectifier Driver

DESCRIPTION

The fundamental of SP6019D synchronous rectifier (SR) driver IC is based on our U.S. patented methods that utilize the principle of “prediction” logic circuit. The IC deliberates previous cycle timing to control the SR in present cycle by “predictive” algorithm that makes adjustments to the turn-off time, in order to achieve maximum efficiency and avoid cross-conduction at the same time. SP6019D is specially suitable for Forward and DC/DC Module.

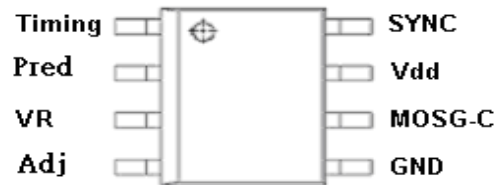
FEATURES

- Offers efficiency improvement over Schottky Diode (depends on drive configuration of the SR).
- Drives all Power MOSFET.
- Prediction gate timing control.
- Minimum MOSFET body diode conduction.
- Operating at high switching frequency.
- Synchronize to transformer secondary voltage waveform.
- Linear setting of timing function.
- SOP-8 and TDFN3X3 8LC Package

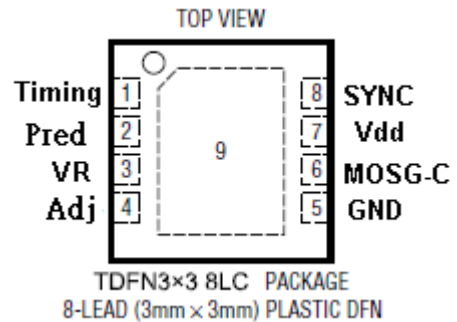
APPLICATION

- Servers & workstations
- Storage area network power supplies
- Telecommunication converters
- Embedded systems
- Industrial & commercial systems using high current processors
- DC/DC Power Module

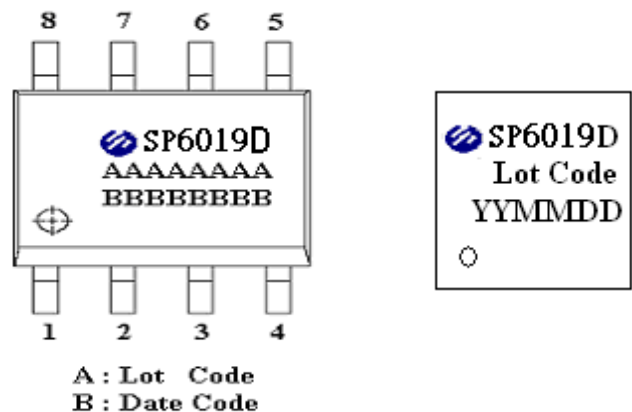
PIN CONFIGURATION (SOP-8)



PIN CONFIGURATION (TDFN3X3 8LC)



PART MARKING

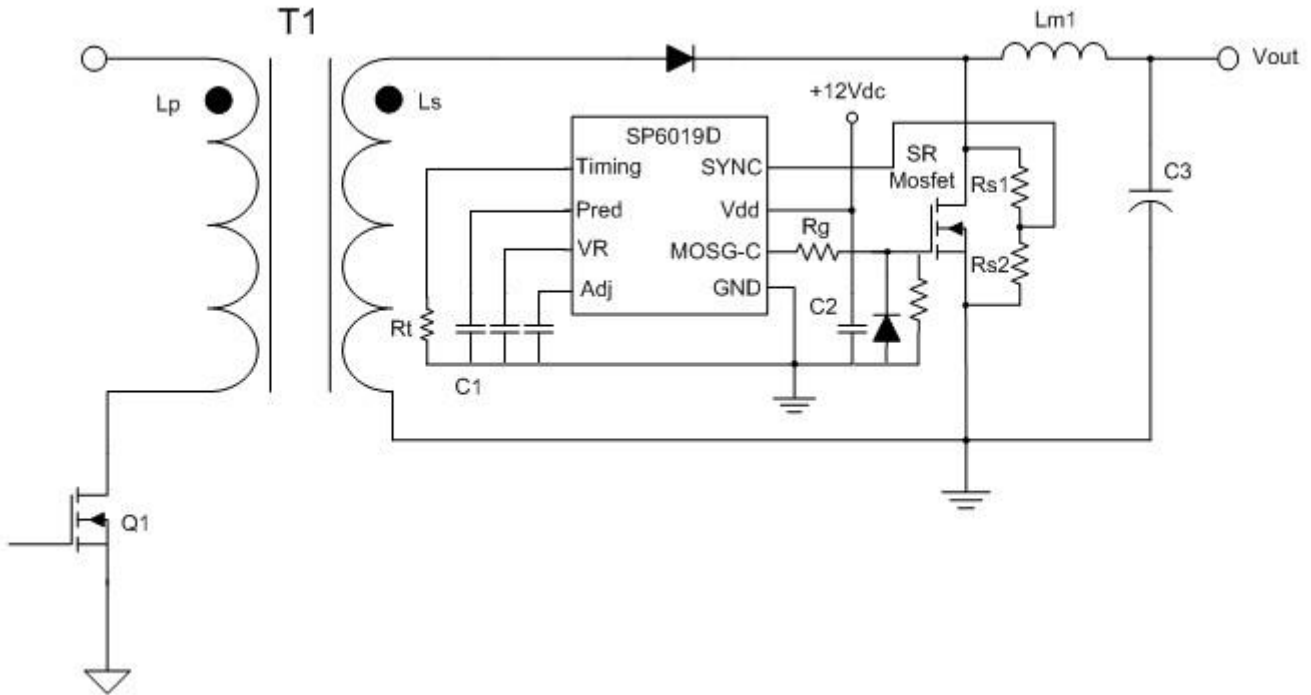




SP6019D

Synchronous Rectifier Driver

TYPICAL APPLICATION CIRCUIT



PIN DESCRIPTION

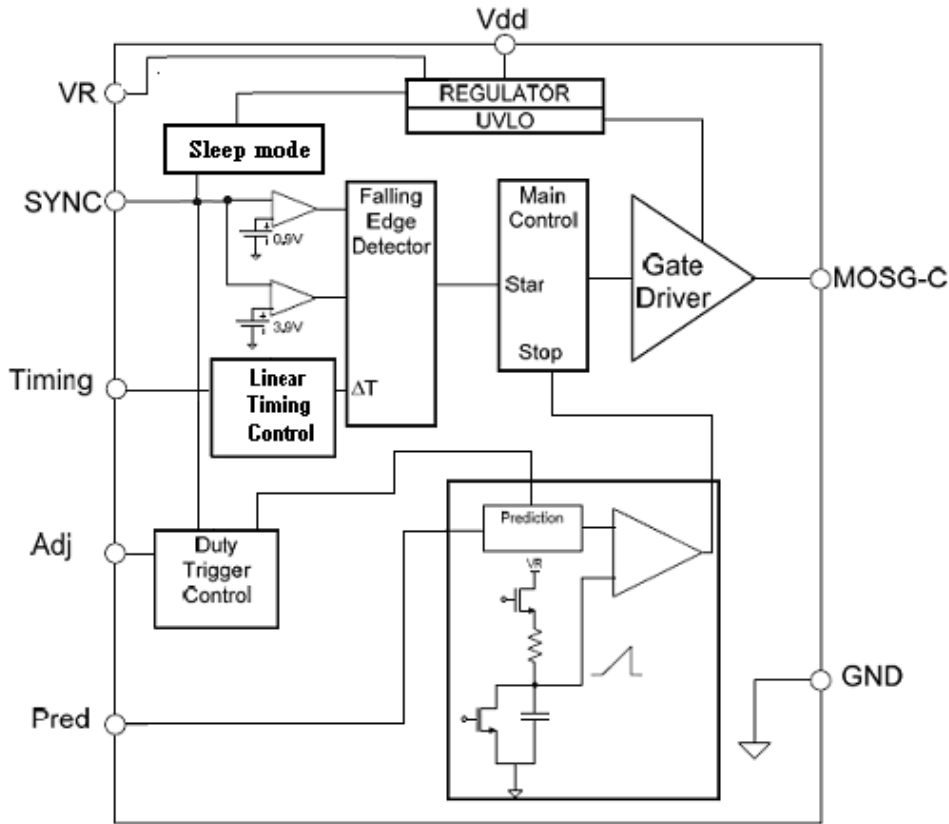
Pin	Symbol	Description
1	Timing	Discontinuous current filter timing adjustment resistor connection.
2	Pred	Capacitor to store previous cycle timing for SR MOSFET.
3	VR	Voltage Regulator.
4	Adj	Trigger point adjustment for Dynamic state.
5	GND	Ground connection.
6	MOSG-C	Catch MOSFET gate drive.
7	Vdd	DC supply voltage.
8	SYNC	Synchronized signal from the V_{DS} of SR MOSFET.
9	GND	Ground, Exposed Pad



SP6019D

Synchronous Rectifier Driver

BLOCK DIAGRAM



ORDERING INFORMATION

Part Number	Package	Part Marking
SP6019DS8RGB	SOP-8	SP6019D
SP6019DS8TGB	SOP-8	SP6019D
SP6019DTDN8RGB	TDFN3X3-8LC	SP6019D

- ※ SP6019DS8RGB : Tape Reel ; Pb – Free ; Halogen - Free
- ※ SP6019DS8TGB : Tube ; Pb – Free ; Halogen – Free
- ※ SP6019TDN8RGB : Tape Reel ; Pb-Free ; Halogen – Free

ABSOLUTE MAXIMUM RATINGS (TA=25°C, unless otherwise specified.)

The following ratings designate persistent limits beyond which damage to the device may occur.

Symbol	Parameter	Value	Unit
V _{dd}	DC Supply Voltage	16	V
I _{OUT}	Peak Source Current (Pulsed)	2.0	A
	Peak Sink Current (Pulsed)	2.0	A
P _D	Power Dissipation @ TA=85°C SOP-8 (*)	0.25	W
P _D	Power Dissipation @ TA=85°C TDN8 (*)	1.8	W
T _J	Operating Junction Temperature Range	-40 to 125	°C
T _{STG}	Storage Temperature Range	-40 to 150	°C
T _{LEAD}	Lead Soldering Temperature for 5 sec.	260	°C



SP6019D

Synchronous Rectifier Driver

THERMAL RESISTANCE

Symbol	Parameter	Value	Unit
$R_{\theta JC}$	Thermal Resistance Junction – Case SOP-8 (*)	45	$^{\circ}C/W$
$R_{\theta JC}$	Thermal Resistance Junction - Case TDN8 (*)	8	$^{\circ}C/W$

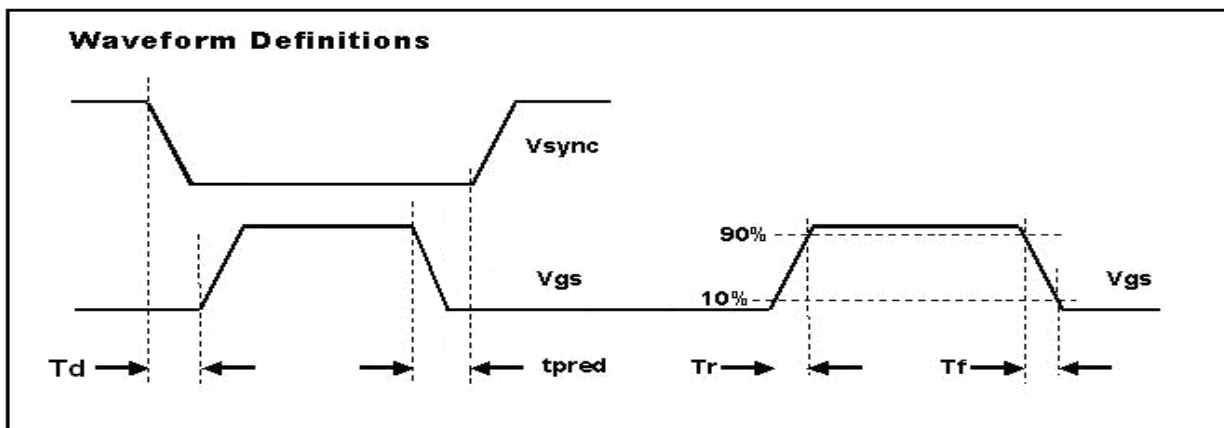
(*) The power dissipation and thermal resistance are evaluated under copper board mounted with free air conditions.

ELECTRICAL CHARACTERISTICS

($T_A=25^{\circ}C$, $V_{dd}=12V$, Freq. =50 KHz, Duty Cycle=50%, unless otherwise specified.)

Symbol	Parameter	Conditions	Min.	Typ.	Max.	Unit
SUPPLY INPUT						
IDD	Supply current	No load		0.15		mA
		$V_{SYNC}=0V$, V_{dd} on Idd peak < 2A		3	4	mA
Vdd	Supply voltage	Idd peak < 2A			16	V
Vdd on	Enable voltage		8	8.5	9	V
Vdd hysteresis	Enable voltage			0.25	0.5	V
Vovp	Over voltage protection		15.5	16.5	17.5	V
Vovp hysteresis				0.3		V
SYNC REFERENCE (SYNC)						
Vshth	SYNC high threshold		3.5	3.9		V
Vslth	SYNC low threshold			0.9	1.2	V
Vsync	SYNC wake-up voltage	I _{sync} =3mA	9		16	V
I _{sync}	SYNC input current				3	mA
Voltage Regulator REFERENCE (VR)						
VR	voltage		5.2		5.4	V
I _{VR}	VR Output Current				50	mA
ON TIME DUTY SETUP (PIN 6)						
T _{on-time}				26	32	us
MOSFET GATE DRIVER (MOSG-C)						
V _{oh}	Output high voltage	I _o = -200mA	10.5	11.0		V
V _{ol}	Output low voltage	I _o = 200mA		0.5	0.8	V
T _d	Propagation delay	No load	25	50	155	ns
T _{pred}		No load		120		ns
T _r	Rise time	Load = 1nF (*)		10	25	ns
T _f	Fall time	Load = 1nF (*)		10	25	ns
Dynamic Protect						
Dt	Dynamic variable	Pin 4 open		600		ns
T _{on-min}	MOSG-C on time	PWM adjusts time > Dt		0.5		us

(*) Tr & Tf are measured among 10% and 90% of starting and final voltage.

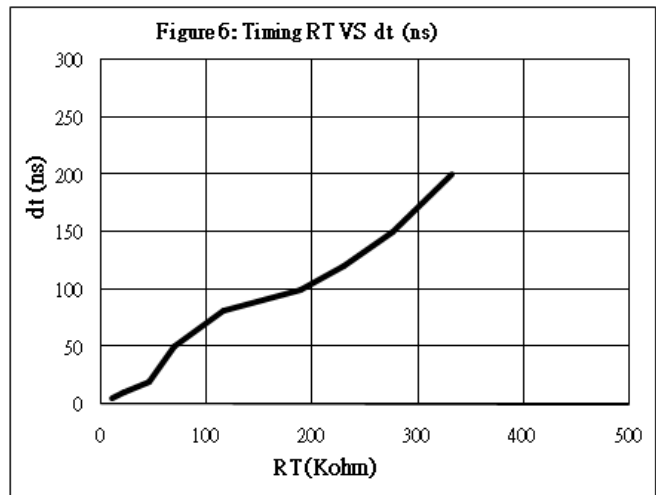
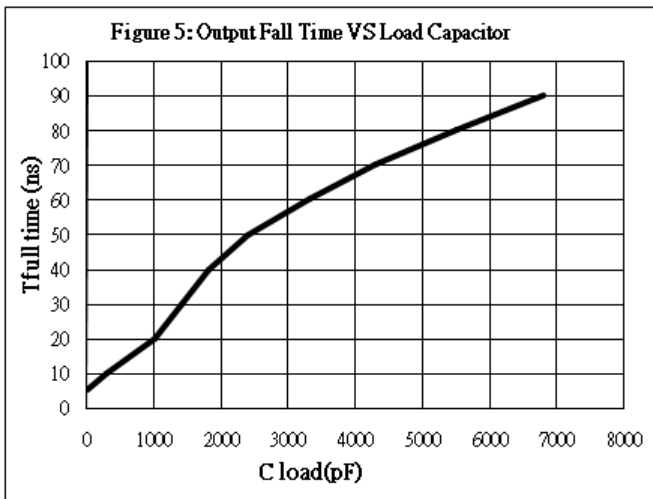
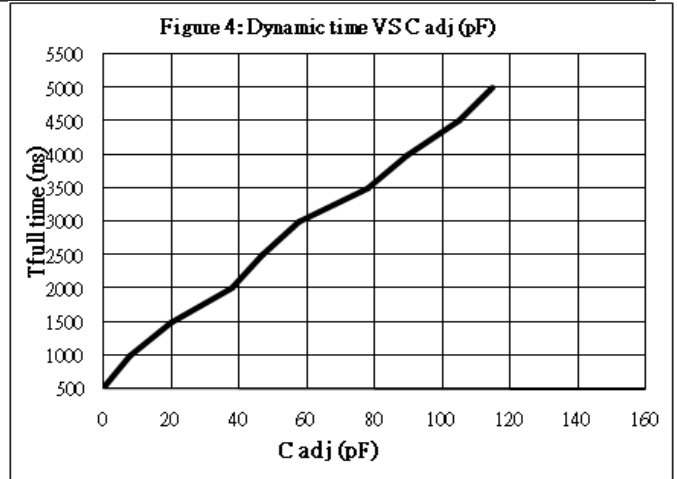
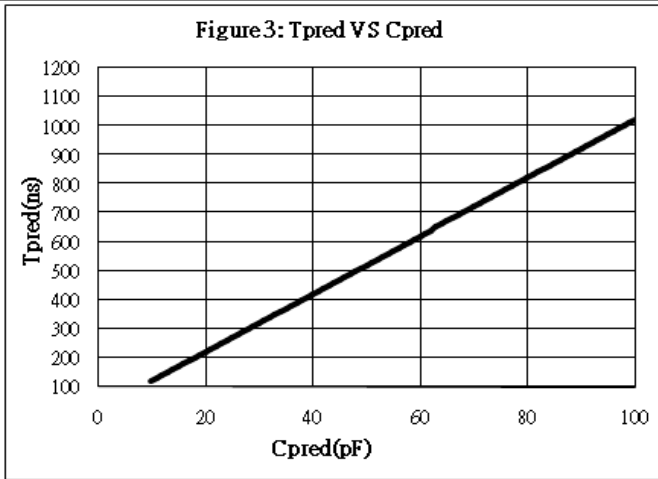
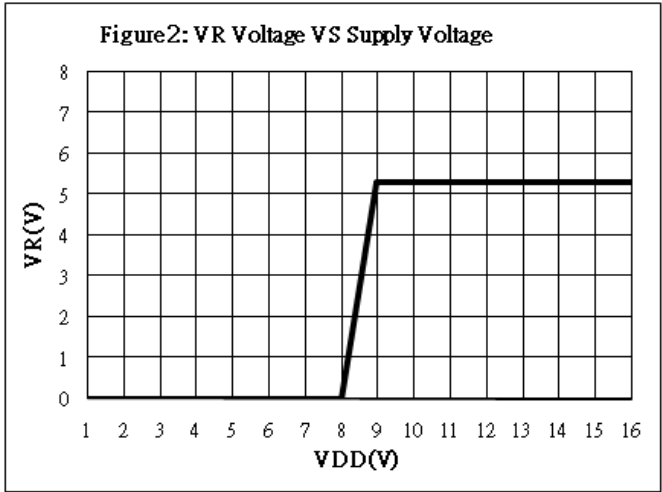
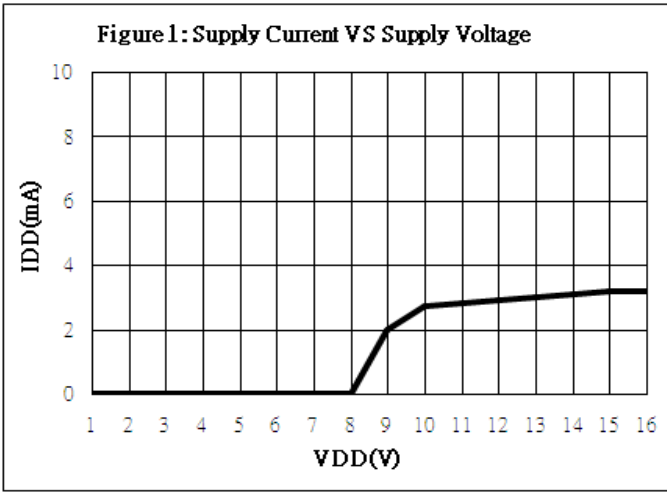




SP6019D

Synchronous Rectifier Driver

PERFORMANCE CHARACTERISTICS ($T_A=25^\circ\text{C}$, unless otherwise specified.)



*Fig. 1 : No Load ; No SYNC

*Fig. 3 : Frequency = 100 kHz

*Fig. 4~5 : Frequency = 65 kHz.

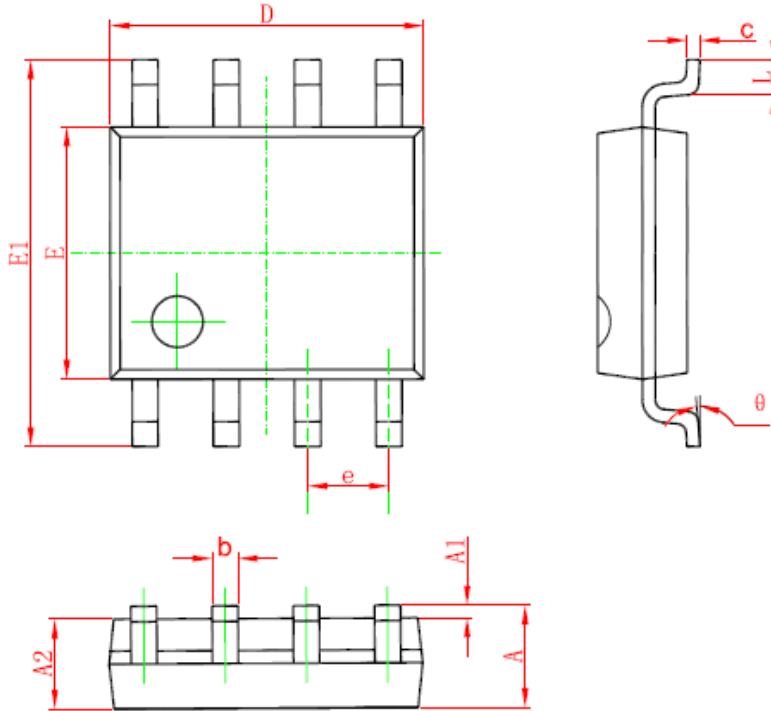
*Fig. 6 : The falling time of negative edge from 3.9V to 0.9V



SP6019D

Synchronous Rectifier Driver

SOP- 8 PACKAGE OUTLINE



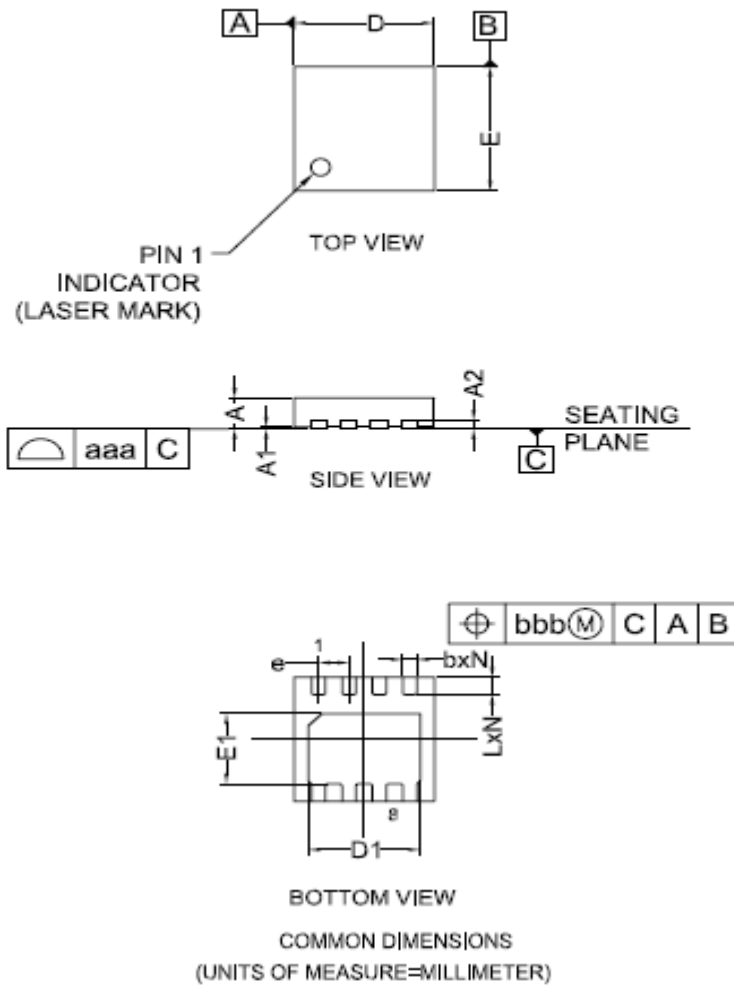
Symbol	Dimensions In Millimeters		Dimensions In Inches	
	Min	Max	Min	Max
A	1.350	1.750	0.053	0.069
A1	0.100	0.250	0.004	0.010
A2	1.350	1.550	0.053	0.061
b	0.330	0.510	0.013	0.020
c	0.170	0.250	0.006	0.010
D	4.700	5.100	0.185	0.200
E	3.800	4.000	0.150	0.157
E1	5.800	6.200	0.228	0.244
e	1.270 (BSC)		0.050 (BSC)	
L	0.400	1.270	0.016	0.050
θ	0°	8°	0°	8°



SP6019D

Synchronous Rectifier Driver

TDFN3X3- 8LC PACKAGE OUTLINE



SYMBOL	MIN	TYP	MAX
A	0,70	0,75	0,80
A1	0,00	0,02	0,05
A2	0,203		
b	0,25	0,30	0,35
D	2,90	3,00	3,10
D1	2,35	2,40	2,45
E	2,90	3,00	3,10
E1	1,65	1,70	1,75
e	0,65BSC		
L	0,37	0,42	0,47
N	8		
aaa	0,08		
bbb	0,10		

- NOTES:
- 1.CONTROLLING DIMENSIONS ARE IN MILLIMETERS(ANGLES IN DEGREES)
 2. COPLANARITY APPLIES TO THE EXPOSED PAD AS THE TERMINALS.



SP6019D

Synchronous Rectifier Driver

Information provided is alleged to be exact and consistent. SYNC Power Corporation presumes no responsibility for the penalties of use of such information or for any violation of patents or other rights of third parties, which may result from its use. No license is granted by allegation or otherwise under any patent or patent rights of SYNC Power Corporation. Conditions mentioned in this publication are subject to change without notice. This publication surpasses and replaces all information previously supplied. SYNC Power Corporation products are not authorized for use as critical components in life support devices or systems without express written approval of SYNC Power Corporation.

© The SYNC Power logo is a registered trademark of SYNC Power Corporation

© 2015 SYNC Power Corporation – Printed in Taiwan – All Rights Reserved

SYNC Power Corporation

7F-2, No.3-1, Park Street

NanKang District (NKSP), Taipei, Taiwan, 115, R.O.C

Phone: 886-2-2655-8178

Fax: 886-2-2655-8468

<http://www.syncpower.com>