

Coaxial Frequency Mixer

ZP-5H+

Level 17 (LO Power +17 dBm) 20 to 1500 MHz



BNC version shown
CASE STYLE: GG60
Connectors Model
BNC ZP-5H+
SMA ZP-5H-S+

Maximum Ratings

Operating Temperature	-55°C to 100°C
Storage Temperature	-55°C to 100°C
RF Power	200mW
IF Current	40mA
Permanent damage may occur if any of these limits are exceeded.	

Coaxial Connections

LO	L
RF	R
IF	X

Features

- low conversion loss, 7.5 dB typ.
- excellent L-R isolation, 50 dB typ., L-I, 29 dB typ.
- wideband, 20 to 1500 MHz
- rugged shielded case

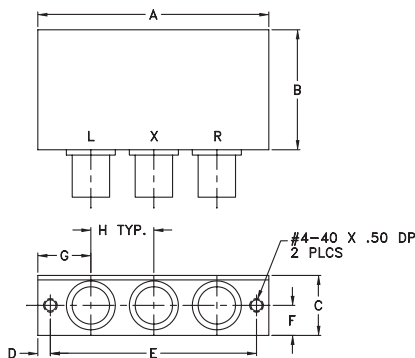
Applications

- VHF/UHF
- satellite distribution
- instrumentation
- cellular

+RoHS Compliant

The +Suffix identifies RoHS Compliance. See our web site for RoHS Compliance methodologies and qualifications

Outline Drawing



Outline Dimensions (inch/mm)

A	B	C	D	E	F	G	H	wt
2.31	1.20	.60	.125	2.062	.30	.53	.63	grams
58.67	30.48	15.24	3.18	52.37	7.62	13.46	16.00	75.0

Electrical Specifications

FREQUENCY (MHz)	CONVERSION LOSS (dB)	LO-RF ISOLATION (dB)			LO-IF ISOLATION (dB)								
		L	M	U	L	M	U						
20-1500	DC-1000	62	55	50	40	38	25	40	25	29	18	20	8

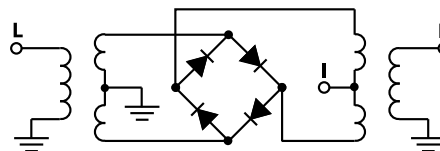
1 dB COMP.: +14 dBm typ.

L = low range [f_L to $10 f_L$] M = mid range [$10 f_L$ to $f_U/2$] U = upper range [$f_U/2$ to f_U]
m = mid band [$2f_L$ to $f_U/2$]

Typical Performance Data

Frequency (MHz)	Conversion Loss (dB)	Isolation L-R (dB)	Isolation L-I (dB)	VSWR RF Port (:1)	VSWR LO Port (:1)
20.00	50.00	6.69	76.70	1.64	1.69
50.00	80.00	6.37	69.50	1.53	1.71
110.00	140.00	5.99	65.00	1.61	1.63
200.00	230.00	5.98	61.10	1.64	1.63
320.00	350.00	6.13	58.30	1.80	1.58
500.00	530.00	6.49	56.50	1.94	1.62
635.00	665.00	6.96	50.80	31.50	1.62
740.00	770.00	7.59	47.20	30.20	1.69
845.00	875.00	8.29	46.10	29.80	1.77
950.00	980.00	8.38	44.20	28.60	1.89
1000.00	1030.00	8.21	41.40	27.80	1.86
1055.00	1085.00	7.97	38.90	27.10	1.84
1100.00	1130.00	7.98	36.60	25.20	1.93
1200.00	1230.00	7.63	37.20	24.10	2.03
1250.00	1280.00	7.55	36.30	22.90	2.08
1300.00	1330.00	7.47	35.00	21.70	2.08
1350.00	1380.00	7.23	34.50	21.10	2.14
1400.00	1730.00	7.30	34.00	19.90	2.24
1470.00	1500.00	7.17	33.80	19.30	2.24
1500.00	1470.00	7.21	33.30	17.00	2.37

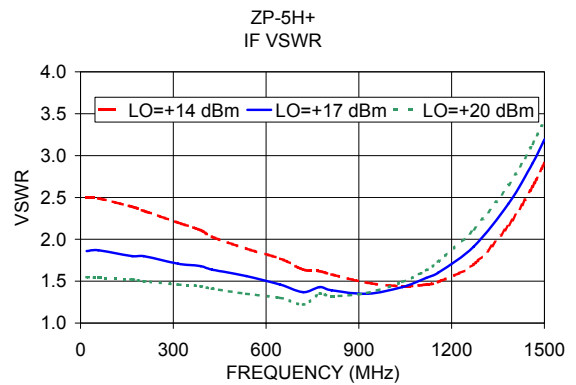
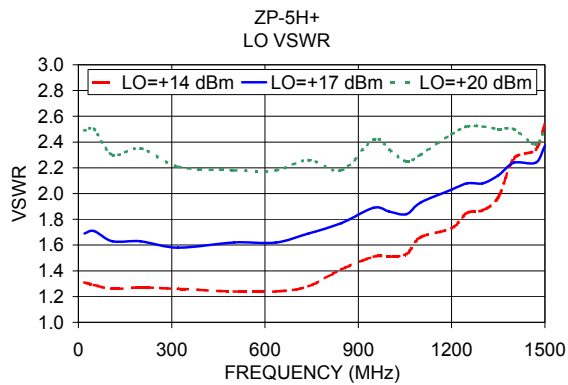
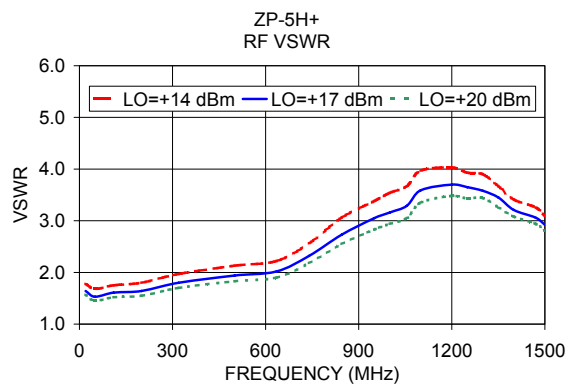
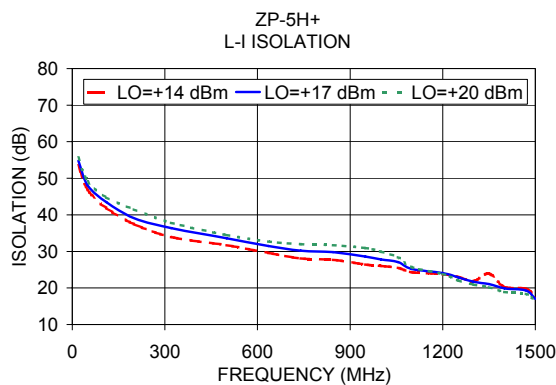
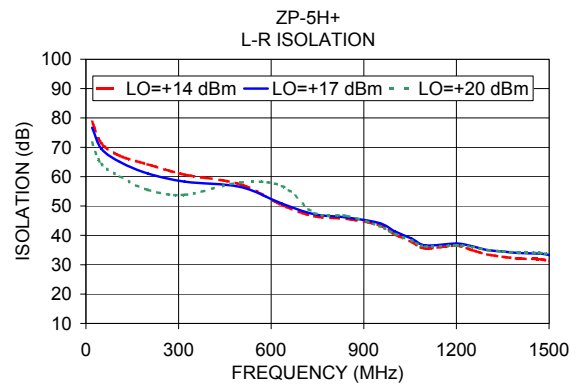
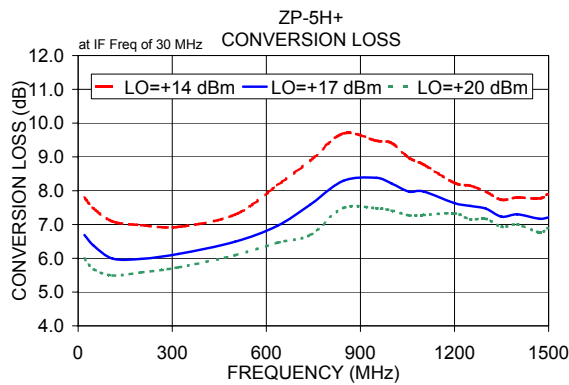
Electrical Schematic



Notes

- Performance and quality attributes and conditions not expressly stated in this specification document are intended to be excluded and do not form a part of this specification document.
- Electrical specifications and performance data contained in this specification document are based on Mini-Circuit's applicable established test performance criteria and measurement instructions.
- The parts covered by this specification document are subject to Mini-Circuits standard limited warranty and terms and conditions (collectively, "Standard Terms"); Purchasers of this part are entitled to the rights and benefits contained therein. For a full statement of the Standard Terms and the exclusive rights and remedies thereunder, please visit Mini-Circuits' website at www.minicircuits.com/WCLStore/terms.jsp





Notes

- A. Performance and quality attributes and conditions not expressly stated in this specification document are intended to be excluded and do not form a part of this specification document.
- B. Electrical specifications and performance data contained in this specification document are based on Mini-Circuit's applicable established test performance criteria and measurement instructions.
- C. The parts covered by this specification document are subject to Mini-Circuits standard limited warranty and terms and conditions (collectively, "Standard Terms"); Purchasers of this part are entitled to the rights and benefits contained therein. For a full statement of the Standard Terms and the exclusive rights and remedies thereunder, please visit Mini-Circuits' website at www.minicircuits.com/MCLStore/terms.jsp

