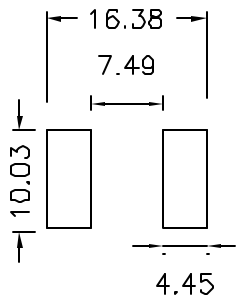
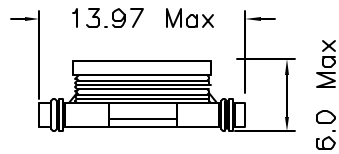
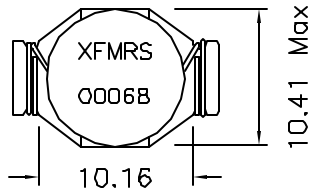
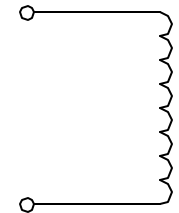


1. Dimensions:



PCB LAYOUT

2. Schematic:



3. Electrical Specs:

OCL: 0.68uH±20% @100KHz, 0.1V

DC Res.: 0.005 Ohms Max

SRF: 200 MHz TYP.

Irms: 12.0Adc (based on 40° C Temp Rise)

Isat: 13.0Adc (based on 10% drop in OCL)

Notes:

1. Solderability: Leads shall meet MIL-STD-202G, Method 208H for solderability.
2. Flammability: UL94V-0
3. ASTM oxygen index: > 28%
4. Insulation System: Class F 155°C. UL file E151556
5. Operating Temperature Range: All listed parameters are to be within tolerance from -40°C to +85°C
6. Storage Temperature Range: -55°C to +125°C
7. Aqueous wash compatible
8. SMD Lead Coplanarity: ±0.004"(0.102mm)
9. Electrical and mechanical specifications 100% tested
10. RoHS Compliant Component

DOC. REV: A/2

XFMRS Inc www.XFMRS.com		Title: SMD Inductor	
UNLESS OTHERWISE SPECIFIED TOLERANCES: .xx ±0.010 Dimensions in MM		P/N: 1XF00068S1M	REV A
		DWN. 廖玉坤	Nov-07-06
Scale 2.5:1 SHT 1 OF 1		CHK. 李清儿	Nov-07-06
		APP. BW	Nov-07-06