

PLEASE CHECK WWW.MOLEX.COM FOR LATEST PART INFORMATION

Part Number: [0878321208](#)
Status: **Active**
Overview: [Milli-Grid™ Connector System](#)
Description: [Milli-Grid™ Header, Surface Mount, Vertical, Shrouded, Lead-Free, 12 Circuits, 0.38µm Gold \(Au\) Plating, with Locking Window, Pick-and-Place Cap, PCB Locator, Tube](#)

Documents:

[3D Model](#) [Packaging Specification PK-87831-001 \(PDF\)](#)
[Drawing \(PDF\)](#) [RoHS Certificate of Compliance \(PDF\)](#)
[Product Specification PS-87831-027-001 \(PDF\)](#)

Agency Certification

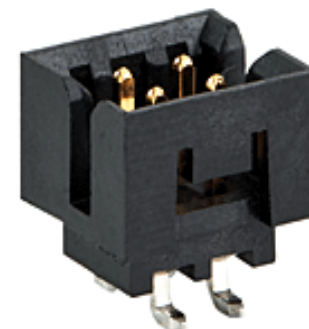
CSA LR19980
 UL E29179

General

Product Family PCB Headers
 Series [87832](#)
 Application Signal, Wire-to-Board
 Comments With Cap|Contact Molex for application in automotive industry
 Overview [Milli-Grid™ Connector System](#)
 Product Name Milli-Grid™
 UPC 822348274420

Physical

Breakaway No
 Circuits (Loaded) 12
 Circuits (maximum) 12
 Color - Resin Black
 Durability (mating cycles max) 100
 First Mate / Last Break No
 Flammability 94V-0
 Glow-Wire Compliant No
 Guide to Mating Part No
 Keying to Mating Part Yes
 Lock to Mating Part Yes
 Material - Metal Phosphor Bronze
 Material - Plating Mating Gold
 Material - Plating Termination Tin
 Material - Resin Nylon
 Net Weight 0.553/g
 Number of Rows 2
 Orientation Vertical
 PCB Locator No
 PCB Retention None
 Packaging Type Tube
 Pitch - Mating Interface 2.00mm
 Pitch - Termination Interface 2.00mm
 Plating min - Mating 0.381µm
 Plating min - Termination 1.905µm
 Polarized to PCB No
 Shrouded Fully
 Stackable No
 Surface Mount Compatible (SMC) Yes
 Temperature Range - Operating -55°C to +105°C
 Termination Interface: Style Surface Mount



Series image - Reference only

EU ELV

Not Relevant

EU RoHS

Compliant

REACH SVHC

Not Contained Per
 -ED/01/2017 (12
 January 2017)

Halogen-Free

Status

Not Low-Halogen

Need more information on product environmental compliance?

Email productcompliance@molex.com
 Please visit the [Contact Us](#) section for any non-product compliance questions.

China ROHS Green Image
 ELV Not Relevant
 RoHS Phthalates Not Contained

Search Parts in this Series

[87832](#) Series

Mates With

Milli-Grid™ Vertical Through Hole Receptacle [79107](#) , [78787](#) , Milli-Grid™ Flex-to-Board Vertical Receptacle [79108](#) , Milli-Grid™ Vertical Surface Mount Receptacle [79109](#) , [78788](#) , Milli-Grid™ Crimp Housing [51110](#) , Milli-Grid™ Cable-to-Board Receptacle [87568](#)

Electrical

Current - Maximum per Contact	2.0A
Voltage - Maximum	125V

Solder Process Data

Duration at Max. Process Temperature (seconds)	010
Lead-free Process Capability	REFLOW
Max. Cycles at Max. Process Temperature	001
Process Temperature max. C	260

Material Info**Reference - Drawing Numbers**

Packaging Specification	PK-87831-001
Product Specification	PS-87831-027-001
Sales Drawing	SD-87832-0001

This document was generated on 07/17/2017

PLEASE CHECK WWW.MOLEX.COM FOR LATEST PART INFORMATION