

FEATURES:

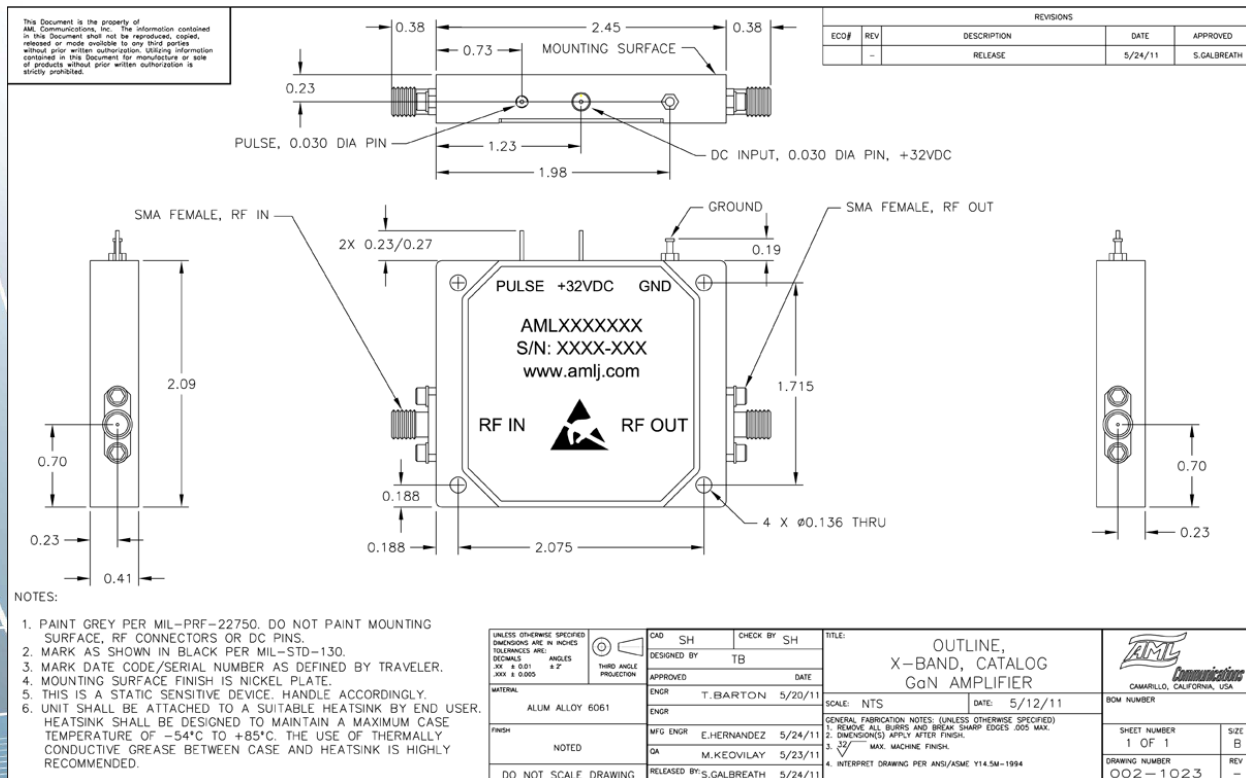
- AML811P5012 is a 7.8-11.0GHz 50-Watt GaN power amplifier
- Amplifier is in hermetically sealed housing with field removable SMA (f) connectors
- ATP (100%) testing includes Gain, Flatness, NF, Psat, VSWR, and DC Current measurement at room temperature.
- Dimensions: 2.45" L x 2.09" W x 0.41" H

ELECTRICAL SPECIFICATIONS:

PARAMETER	MIN	TYP	MAX	UNITS
Frequency Range	7.8		11.0	GHz
Gain	50			dB
Gain Flatness vs Freq.			±3.0	dB
Noise Figure			6.0	dB
Psat	45.5	46.5		dBm
Psat		44		Watts
DC Voltage		28		V
DC Current		6.0		A
PAE		23		%
TTL Control	DC On/Off			
Switching Speed	On: 250 ns nom Off: 500 ns nom			
50% TTL – 90% RF/10% RF				
DC Power in Off condition	<10% full RF			

Specifications above are at +25°C unless stated otherwise

OUTLINE:



Specifications are subject to change without notice