

RECTIFIER DIODES MODULE

ADD360HVI

Repetitive voltage up to **4500 V**
Mean forward current **385 A**
Surge current **5,6 kA**

FINAL SPECIFICATION

Mar. 17 - Issue: 1

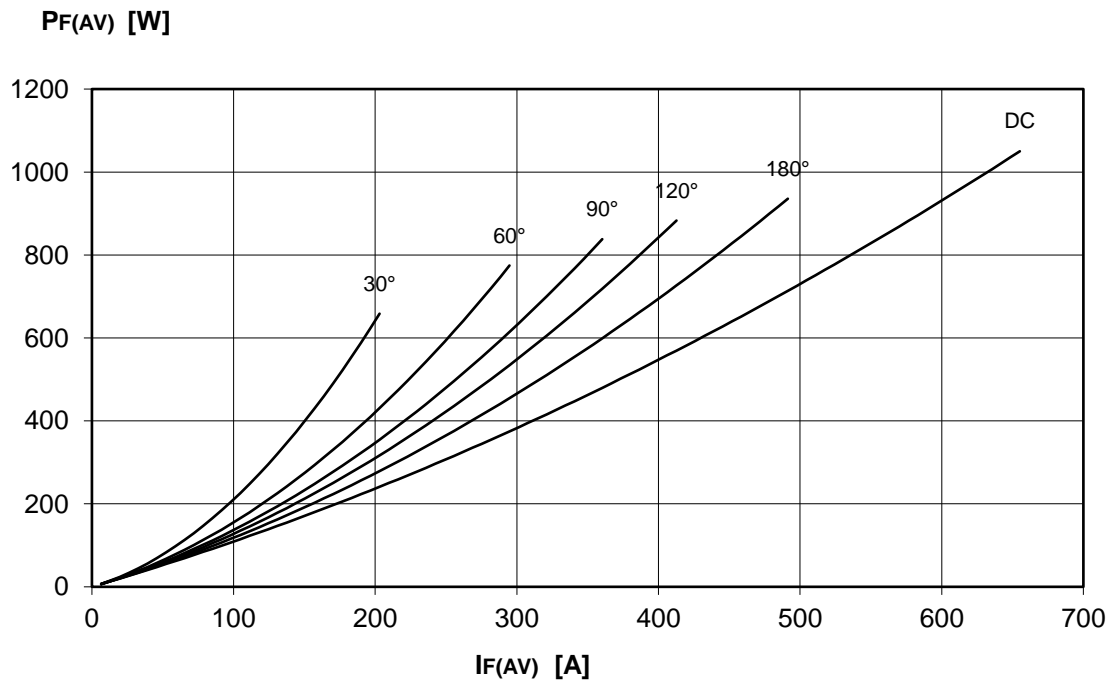
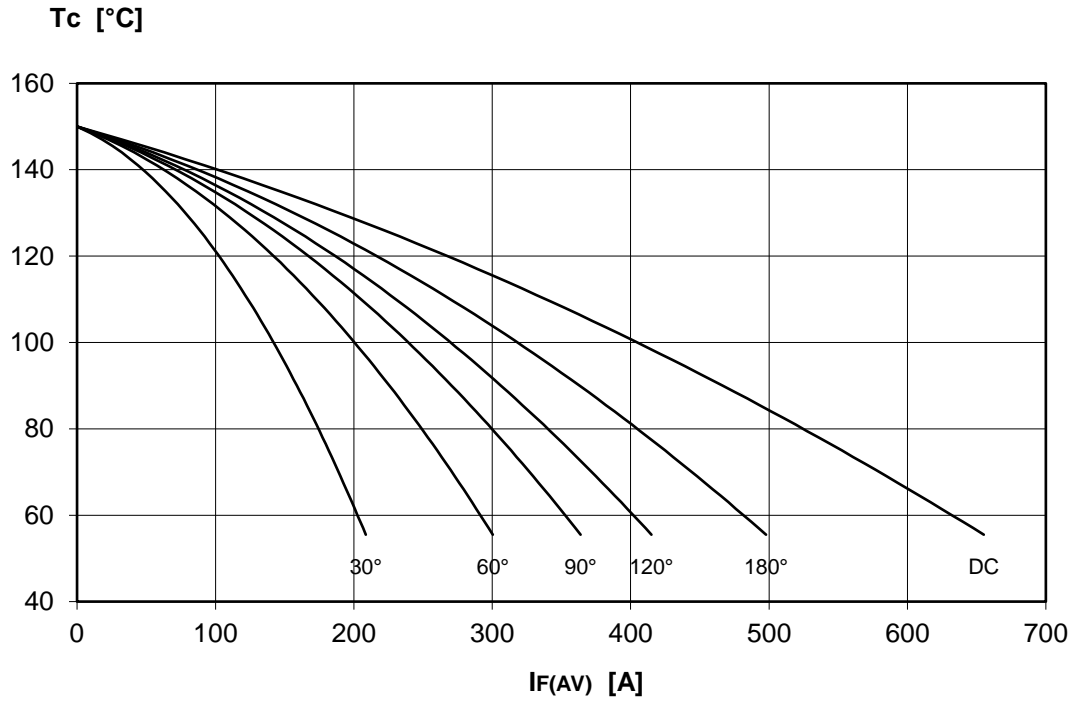
Symbol	Characteristic	Conditions	T _j [°C]	Value	Unit
BLOCKING					
V _{RRM}	Repetitive peak reverse voltage		150	4500	V
V _{RSM}	Non-repetitive peak reverse voltage		150	4600	V
I _{RRM}	Repetitive peak reverse current	V=VRRM	150	50	mA
CONDUCTING					
I _{F(AV)}	Mean forward current	180° sin, 50 Hz, T _c =100°C, double side cooled		321	A
I _{F(AV)}	Mean forward current	180° sin, 50 Hz, T _c =85°C, double side cooled		385	A
I _{FSM}	Surge forward current	Sine wave, 10 ms without reverse voltage	150	5,6	kA
I ² t	I ² t			157 x 10 ³	A ² s
V _{FM}	Forward voltage	Forward current = 2000 A	25	2,84	V
V _{F(TO)}	Threshold voltage		150	1,00	V
r _F	Forward slope resistance		150	0,920	mohm
SWITCHING					
t _{rr}	Reverse recovery time		150		μs
Q _{rr}	Reverse recovery charge				μC
I _{rr}	Peak reverse recovery current				A
MOUNTING					
R _{th(j-c)}	Thermal impedance, DC	Junction to heatsink, double side cooled		90,0	°C/kW
R _{th(c-h)}	Thermal impedance	Case to heatsink, double side cooled		20,0	°C/kW
T _j	Operating junction temperature			-30 / 150	°C
V _{ins}	RMS insulation voltage	50Hz, circuit to base, all terminal shorted	25	6000	V
T	Mounting torque	Case to heatsink		4 to 6	Nm
		Busbars to terminals		12 to 18	Nm
	Mass			1500	g

ORDERING INFORMATION : ADD360HVI S 45

standard specification VRRM/100

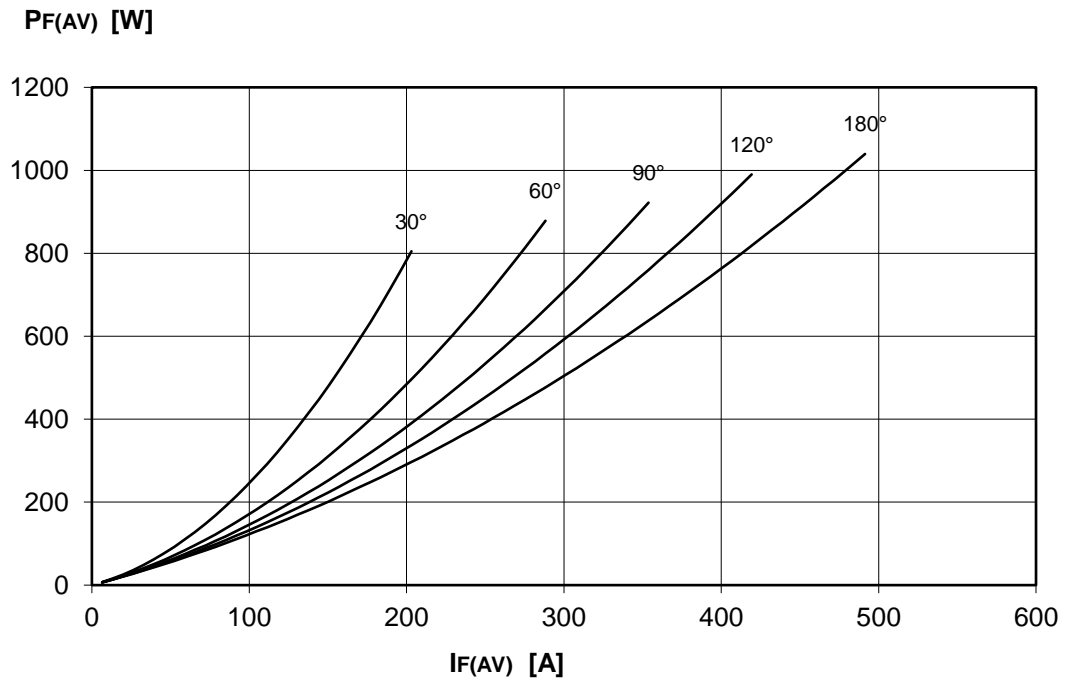
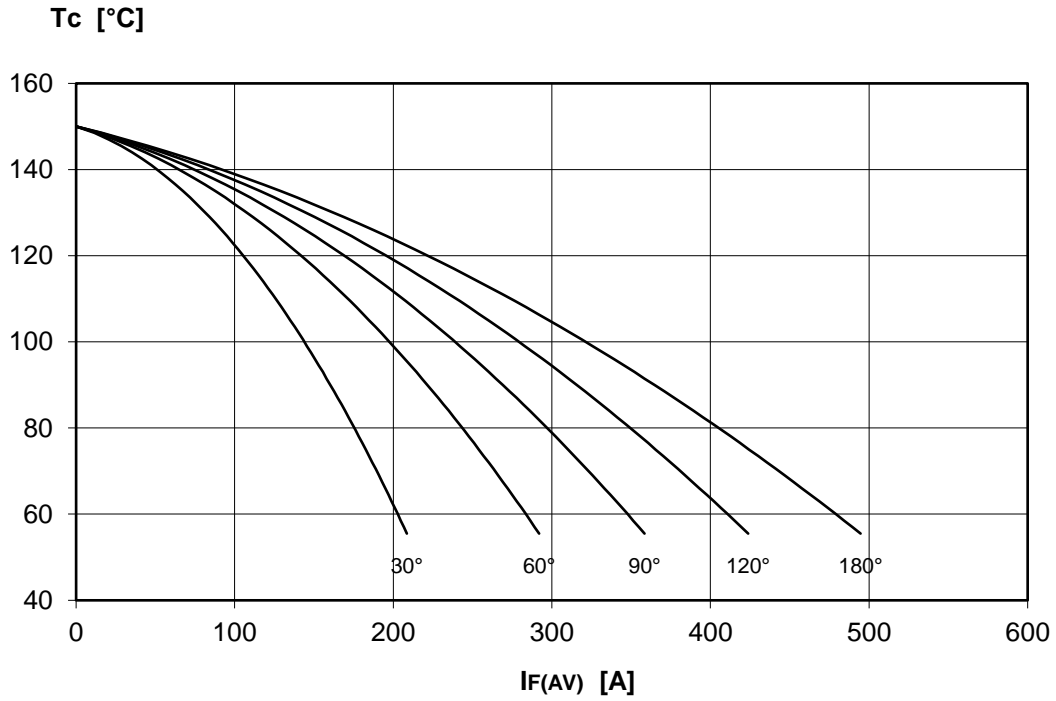
DISSIPATION CHARACTERISTICS

SQUARE WAVE

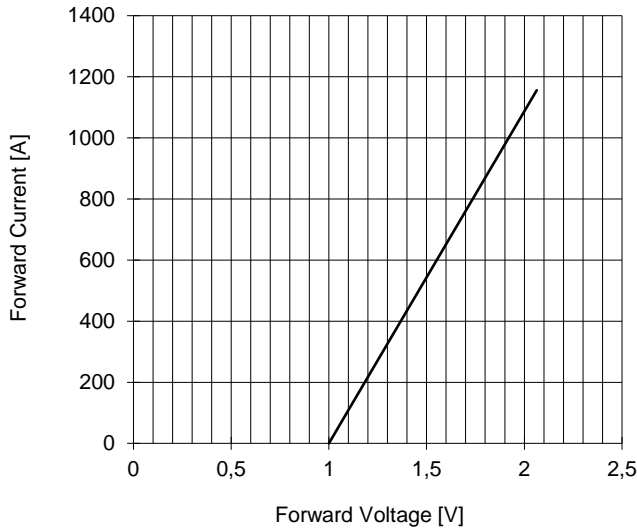


DISSIPATION CHARACTERISTICS

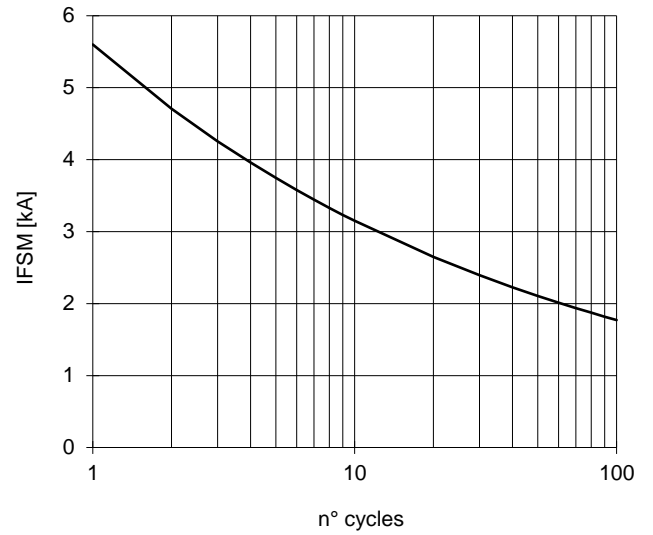
SINE WAVE



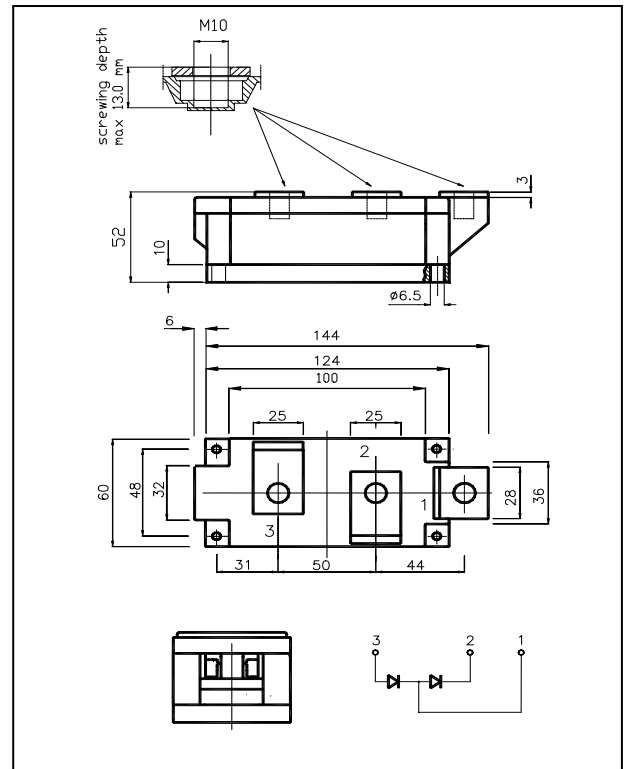
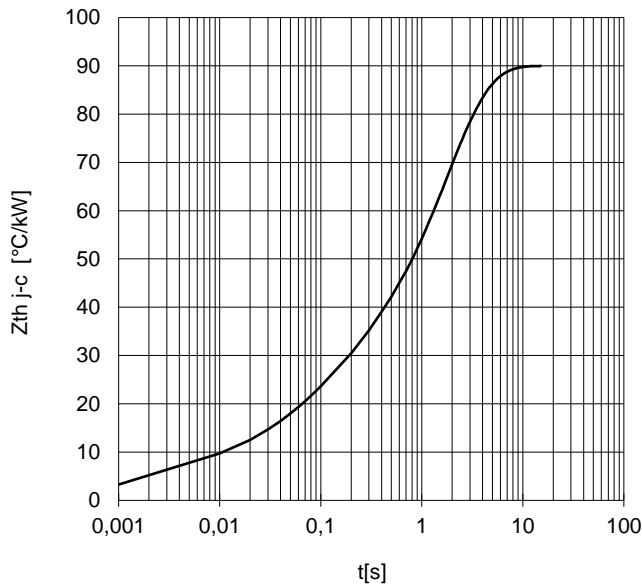
FORWARD CHARACTERISTIC
T_j = 150 °C



SURGE CHARACTERISTIC
T_j = 150 °C



TRANSIENT THERMAL IMPEDANCE



All the characteristics given in this data sheet are guaranteed only with uniform clamping force, cleaned and lubricated heatsink, surfaces with flatness < .03 mm and roughness < 2 μm.
In the interest of product improvement POSEICO SpA reserves the right to change any data given in this data sheet at any time without previous notice.
If not stated otherwise the maximum value of ratings (symbols over shaded background) and characteristics is reported.

Distributed by

