

**SIPAT Co., Ltd.**  
www.sipatsaw.com

Part Number: CMF2A945S30CCA

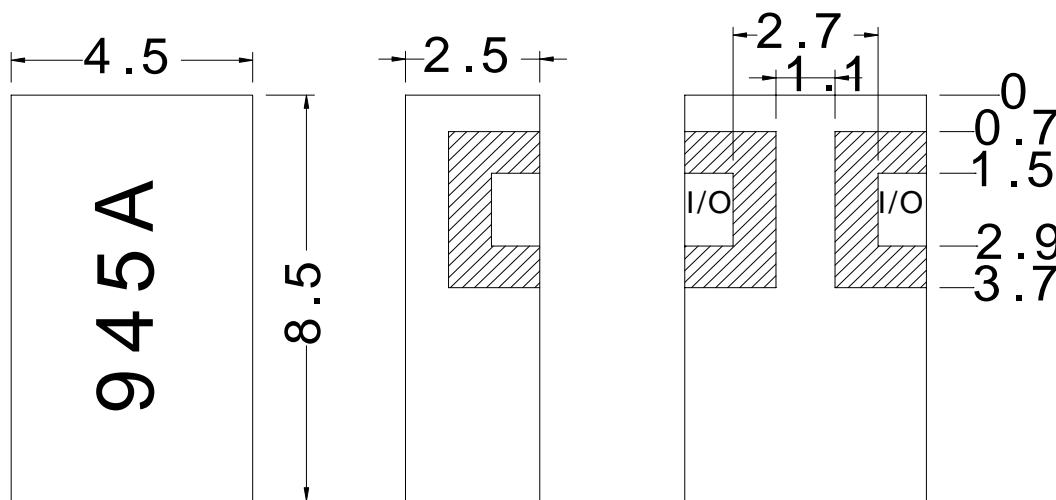
ELECTRICAL SPECIFICATIONS

ITEM	SPEC	Unit
1	Center Frequency [fo]	945.0
2	Bandwidth [BW]	$f_o \pm 15.0$ [ 930 ~ 960 ]
3	Insertion Loss in BW	2.5 max.
4	Ripple in BW	0.5 max.
5	V S W R	2.0 : 1
6	In/Out Impedance	50 $\Omega$
7	Attenuation [Absolute Value]	40.0 dB min. @ 845.0 [fo-100] MHz
8	Operation Temperature Range	-40°C to +85°C

DIMENSIONS

TOP VIEW

BOTTOM VIEW



 ground

unit: mm

tolerance:  $\pm 0.20$



**SIPAT Co., Ltd.**  
( CETC No. 26 Research Institute )  
Nanping Huayuan Road No. 14  
Chongqing, China, 400060

Part Number CMF2A945S30CCA

Rev. Date 2005-11-23

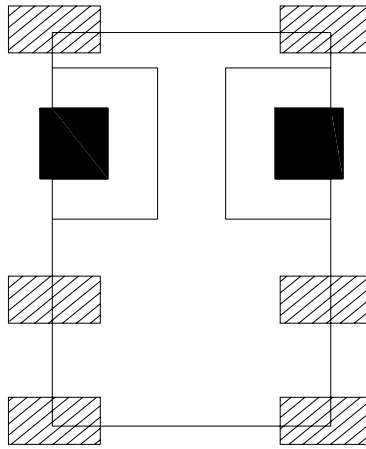
Rev. 1.0

Page 1/4

**SIPAT Co., Ltd.**  
www.sipatsaw.com

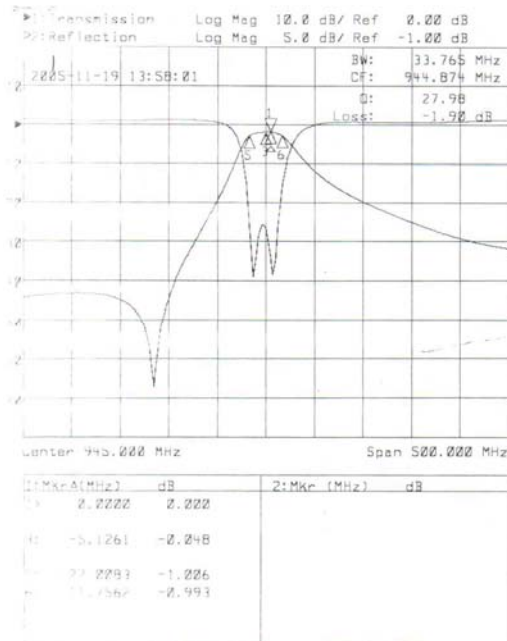
Part Number: CMF2A945S30CCA

RECOMMENDED PC BOARD PATTERN



-  I/O PORT SOLDERING POINT
-  GROUND SOLDERING POINT

CHARACTERISTICS

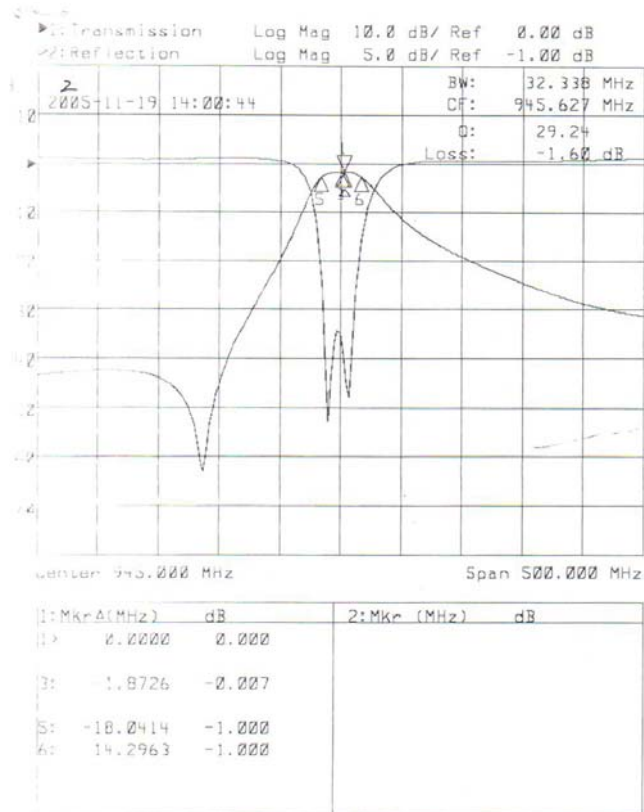
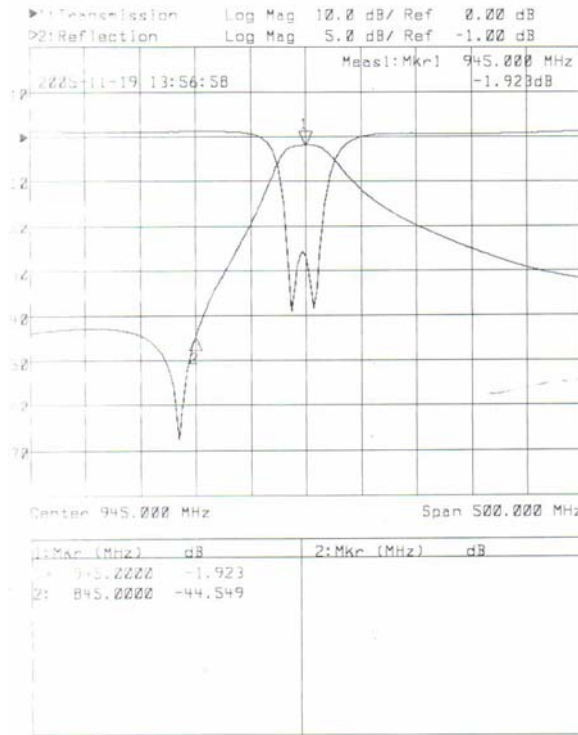


**SIPAT Co., Ltd.**  
( CETC No. 26 Research Institute )  
Nanping Huayuan Road No. 14  
Chongqing, China, 400060

Part Number	CMF2A945S30CCA	
Rev. Date	2005-11-23	
Rev.	1.0	Page 2/4

**SIPAT Co., Ltd.**  
www.sipatsaw.com

Part Number: CMF2A945S30CCA



**SIPAT Co., Ltd.**  
( CETC No. 26 Research Institute )  
Nanping Huayuan Road No. 14  
Chongqing, China, 400060

Part Number CMF2A945S30CCA

Rev. Date 2005-11-23

Rev. 1.0

Page 3/4



**SIPAT Co., Ltd.**  
( CETC No. 26 Research Institute )  
Nanping Huayuan Road No. 14  
Chongqing, China, 400060

Part Number CMF2A945S30CCA

Rev. Date 2005-11-23

Rev. 1.0

Page 4/4