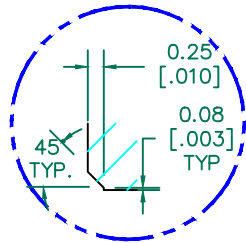


SEE DETAIL "A"

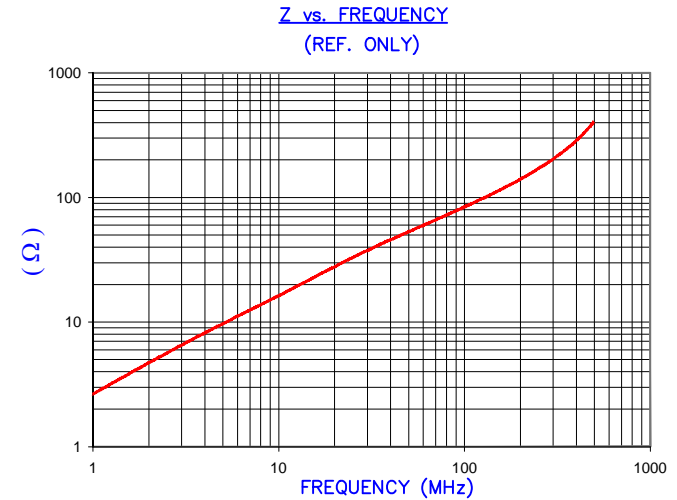


DETAIL "A"
CHAMFER
SCALE=4:1

UNCONTROLLED DOCUMENT

RoHS

IMPEDANCE (Z)			
Frequency	25 MHz	100 MHz	300 MHz
Nominal (REF)	33 Ω	83 Ω	200 Ω
Minimum	- Ω	66 Ω	- Ω



AGILENT E4991A Impedance/Material Analyzer
HP 16092A Test Fixture

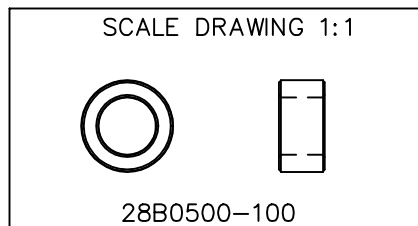
FERRITE CORE DIMENSIONS (SPEC): mm/inches

A	12.70 [.500]	+	0.25 [.010]
B	7.92 [.312]	+	0.15 [.006]
C	6.35 [.250]	+	0.18 [.007]

WEIGHT/1000 2.4 kgs [5.3 Lbs]

NOTES:

- PARTS MUST BE TUMBLED, BURNISHED OR DEBURRED TO REMOVE ALL BURRS AND SHARP EDGES.
- COSMETIC SPECIFICATION REFER TO WI-QA-038.



DIMENSIONS ARE IN mm [INCHES].				This print is the property of Laird Tech. and is loaned in confidence subject to return upon request and with the understanding that no copies shall be made without the written consent of Laird Tech. All rights to design or invention are reserved.				
REV	DESCRIPTION	DATE	INT					
J	UPDATE THE LOGO	05/13/15	QIU	PROJECT/PART NUMBER:		REV	PART TYPE:	DRAWN BY:
K	UPDATE COMPANY LOGO & CHAMFER	03/07/08	JRK	28B0500-100		L	FERRITE CORE	LNK
J	UPDATE Z SPEC AND COMPANY LOGO	05/30/07	JRK	DATE:	08/05/92	SCALE:	3:1	MATERIAL:
H	UPDATE MIN Z SPEC @ 100 MHZ	10/04/06	JRK	CAD #	28B0500-100-L	TOOL #	B0500	Ferrite
G	UPDATE PRINT FORMAT AND Z SPECS	03/03/03	JRK					
	ADD Z CURVE							
REV	DESCRIPTION	DATE	INT					