



Schottky Barrier Rectifier

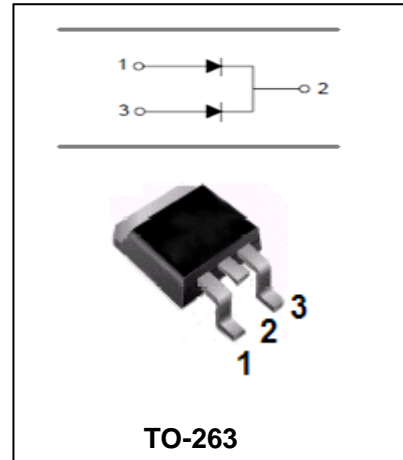
SBLB2030CT-SBLB20100CT

FEATURES

- Metal-Semiconductor Junction With Guard Ring
- Epitaxial Construction.
- Low Forward Voltage Drop,Low Switching Losses.
- High Surge Capacity.
- For Use In Low Voltage,High Frequency Inverters Free Wheeling,and Polarity Protection Applications.
- The Plastic Material Carries U/L Recognition 94V-0.



Lead-free



MAXIMUM RATING operating temperature range applies unless otherwise specified

| Symbol | Parameter | SBLB 2030 CT | SBLB 2035 CT | SBLB 2040 CT | SBLB 2045 CT | SBLB 2050 CT | SBLB 2060 CT | SBLB 2080 CT | SBLB 20100 CT | Unit |
|-----------------|--|--------------------|--------------------|--------------------|--------------------|--------------------|--------------------|--------------------|---------------------|---------------|
| V_{RRM} | Recurrent Peak Reverse Voltage | 30 | 35 | 40 | 45 | 50 | 60 | 80 | 100 | V |
| V_{RMS} | RMS Voltage | 21 | 25 | 28 | 32 | 35 | 42 | 56 | 70 | V |
| V_{DC} | DC Blocking Voltage | 30 | 35 | 40 | 45 | 50 | 60 | 80 | 100 | V |
| $I_{F(AV)}$ | Average Forward Rectified Current @ $T_A=100^{\circ}C$ | 20 | | | | | | | | A |
| I_{FSM} | Peak Forward Surge Current 8.3ms Single Half Sine-wave Superimosed on Rated Load | 250 | | | | | | | | A |
| $R_{\theta JC}$ | Thermal Resistance(Note1) | 1.5 | | | | | | | | $^{\circ}C/W$ |
| T_j | Operating Junction Temperature Range | -55 to +125 | | | | | | | | $^{\circ}C$ |
| T_{stg} | Storage Temperature Range | -55 to +150 | | | | | | | | $^{\circ}C$ |

Note:1.Thermal resistance junction to case.



Schottky Barrier Rectifier

SBLB2030CT-SBLB20100CT

ELECTRICAL CHARACTERISTICS @ Ta=25°C unless otherwise specified.

| Parameter | Symbol | Test conditions | SBLB2030CT-SBLB2045CT | SBLB2050CT-SBLB2060CT | SBLB2080CT-SBLB20100CT | UNIT |
|-----------------|----------------|---|-----------------------|-----------------------|------------------------|------|
| | | | MAX | | | |
| Forward Voltage | V _F | I _F =10A | 0.60 | 0.75 | 0.85 | V |
| Reverse Current | I _R | V _R =V _{RRM} , T _A =25°C V _R =V _{RRM} , T _A =100°C | 1.0 50 | | | mA |

TYPICAL CHARACTERISTICS @ Ta=25°C unless otherwise specified

FIG.1 – PEAK FORWARD SURGE CURRENT

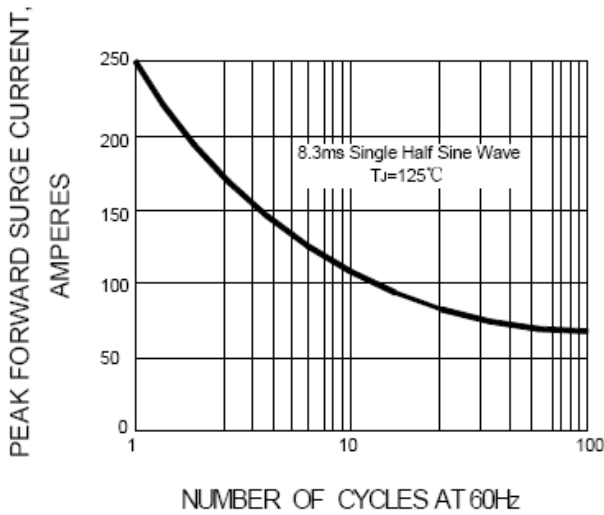


FIG.2 – FORWARD DERATING CURVE

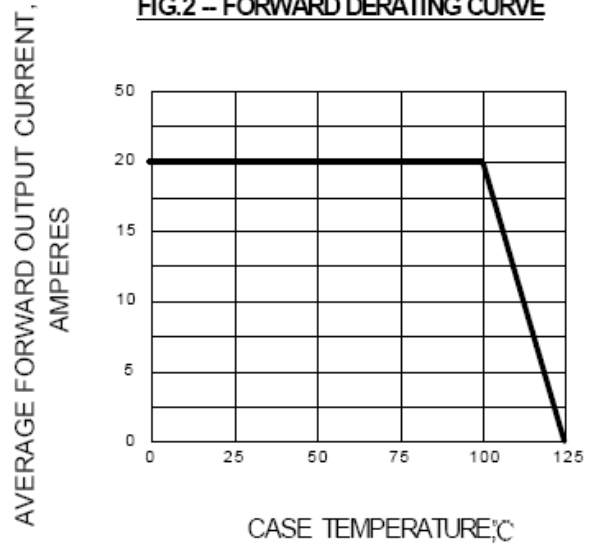


FIG.3 – TYPICAL FORWARD CHARACTERISTIC

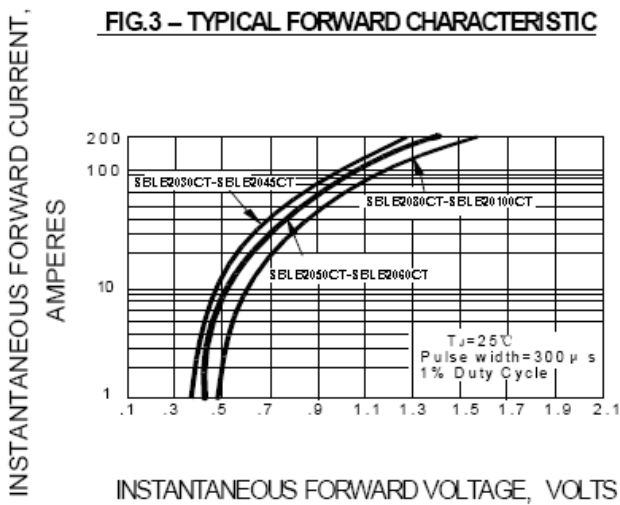
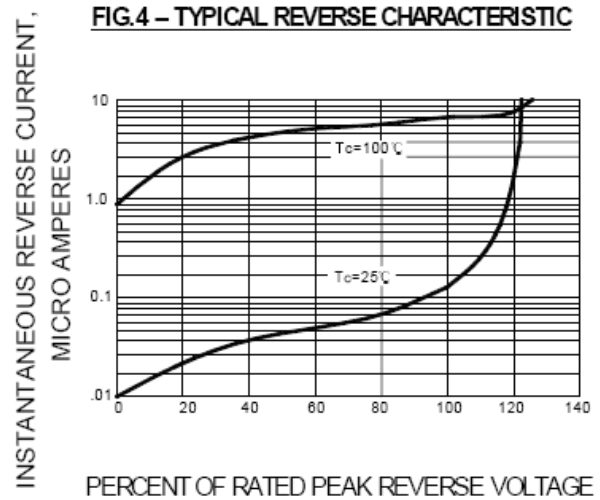


FIG.4 – TYPICAL REVERSE CHARACTERISTIC





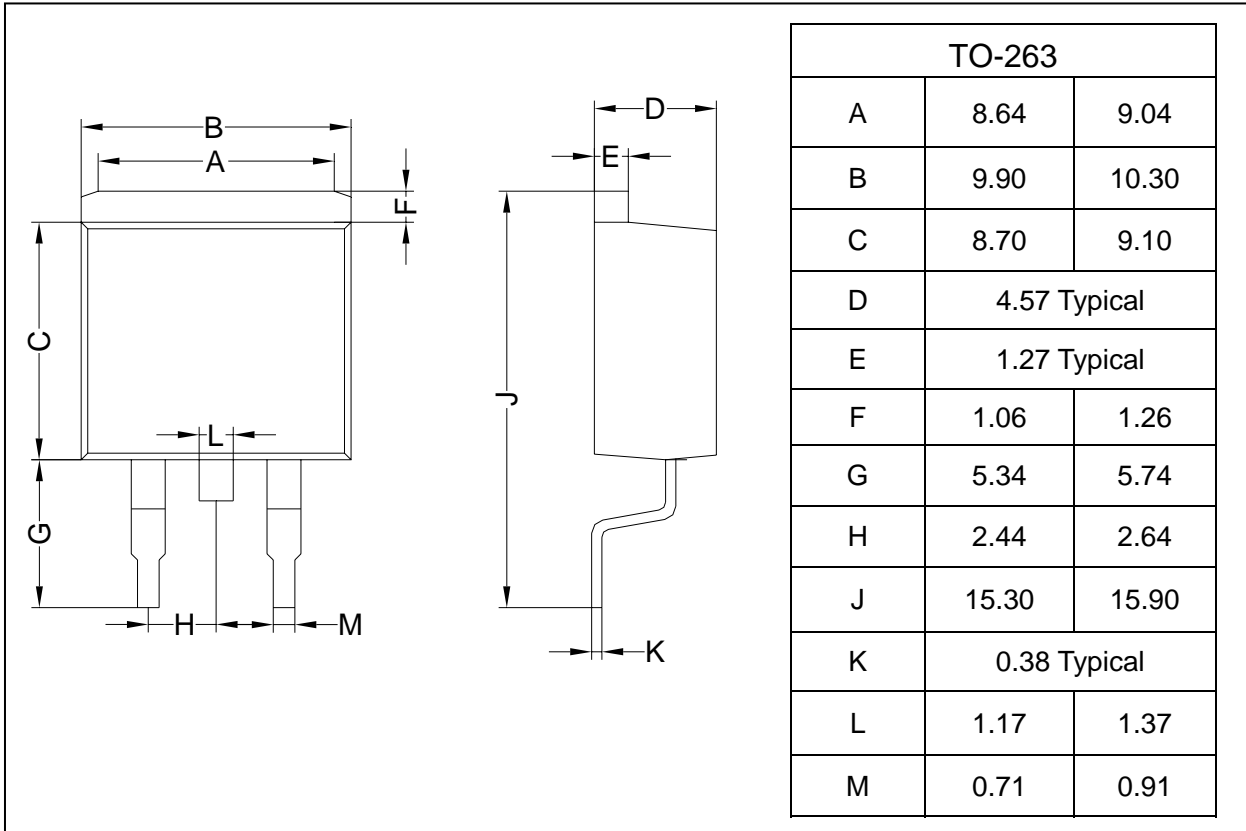
Schottky Barrier Rectifier

SBLB2030CT-SBLB20100CT

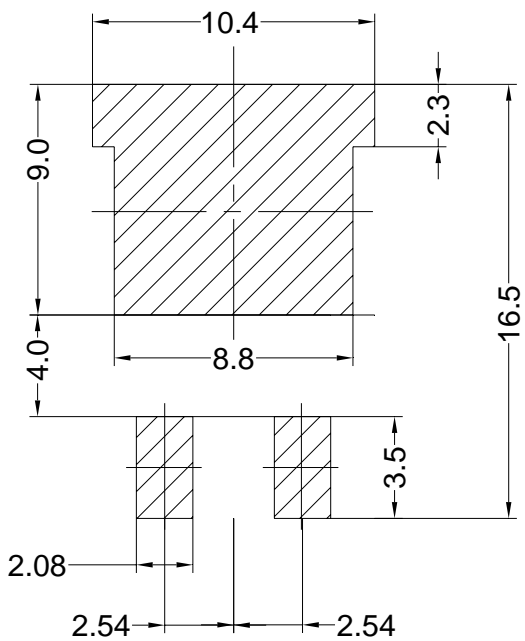
PACKAGE OUTLINE

Plastic surface mounted package

TO-263



SOLDERING FOOTPRINT



Unit:mm