

**FEATURES:**



- AC Input 90~264 Vac Nominal
- AC Inrush current: 40 A at 240 Vac Cold start
- Protection: SCP / OVP / OTP
- High Operating Ambient Temp.: -20°C ~ +60°C
- Surge Protection: L-N 0.5 kV
- Safety: UL 1310 / PSE
- EMI: CE / Meets FCC
- Comply with Indoor/Outdoor Waterproof (IP 67)
- Warranty: 2 years (refer to LinkCom warranty policy)
- RoHS Compliant

PRODUCT SPECIFICATION						
MODEL	DC OUTPUT POWER(W)	DC OUTPUT VOLTAGE(V)	OUTPUT CURRENT(mA)	OUTPUT CURRENT TOLERANCE	EFFICIENCY	O/P NOISE(P-P,V)
BPHE010C201-50	9.6	3-48	216-264	—	70%	0.25
BPHE010C251-50	10	3-40	234-286	—	70%	0.25
BPHE010C301-50	10.88	3-34	288-352	—	70%	0.25
BPHE010C351-50	10.5	3-30	333-407	—	70%	0.25
BPHE010C401-50	10	3-25	369-451	—	70%	0.25
BPHE010C451-50	10.8	3-24	414-506	—	70%	0.25
BPHE010C501-50	10	3-20	459-561	—	70%	0.25
BPHE010C601-50	10.2	3-17	549-671	—	70%	0.25
BPHE010C701-50	10.5	3-15	636-781	—	70%	0.25
BPHE010C751-50	9.75	3-13	684-836	—	70%	0.25
BPHE010C801-50	9.6	3-12	729-891	—	70%	0.25

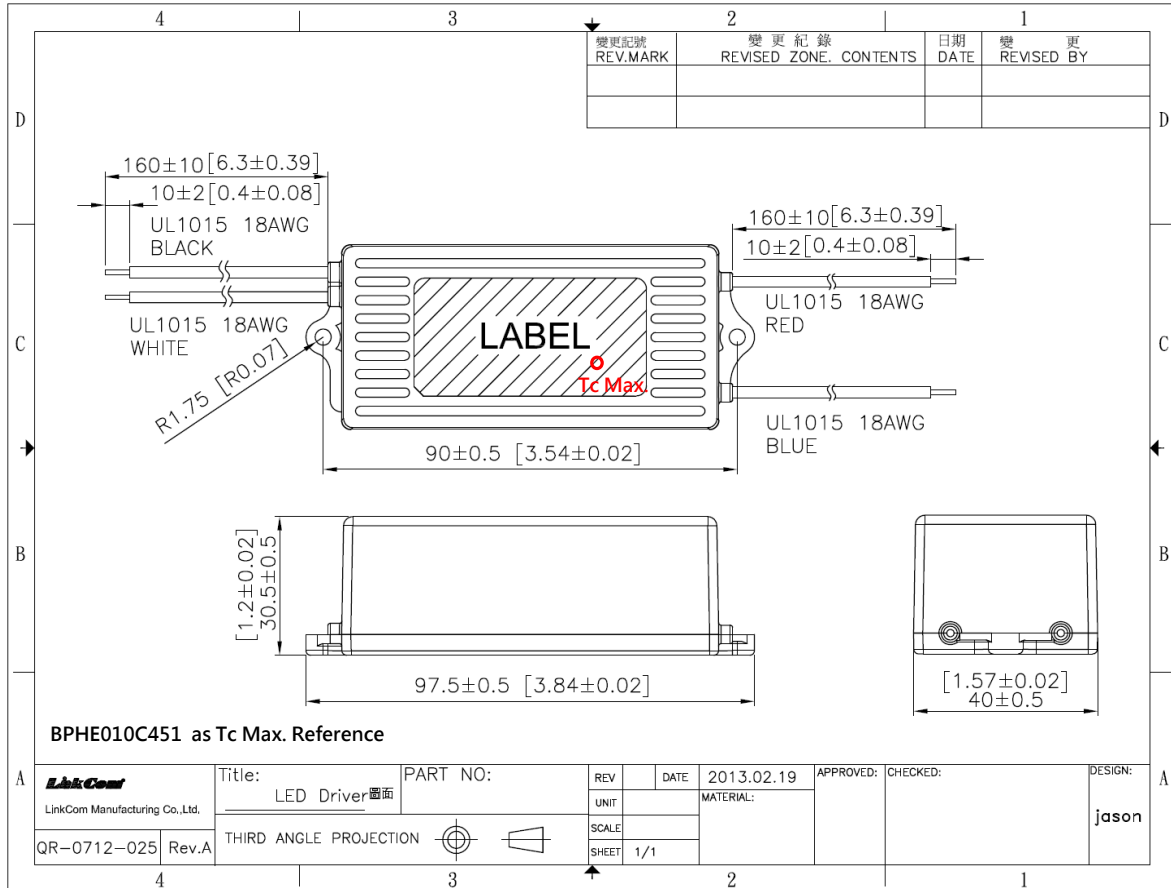
ELECTRICAL SPECIFICATION	
INPUT VOLTAGE RANGE	90-264 Vac, 127-373 Vdc, Normal: 100-240 Vac
INPUT FREQUENCY	Range: 47-63 Hz, Normal: 50-60 Hz
ACTIVE POWER FACTOR	NA
THD	NA
TURN ON DELAY TIME	3200ms, 2000ms at full load 115 Vac / 230 Vac
AC CURRENT	<0.3 A 110 Vac; <0.15A 230 Vac
INRUSH CURRENT (typ)	Cold Start 40 A at 240 Vac
LEAKAGE CURRENT	< 0.7 mA / 264 Vac
SHORT CIRCUIT PROTECTION	SCP will restart automatically after the fault condition is removed
OVER VOLTAGE PROTECTION	OVP will restart automatically after the fault condition is removed
OVER TEMP. PROTECTION	OTP will restart automatically after the fault condition is removed
OVER CURRENT PROTECTION	NA
OPERATING TEMP.	-20 °C ~ +60 °C
STORAGE TEMP.	-40 °C ~ +80 °C
RELATIVE HUMIDITY	10% to +90%, non-cond.
SAFETY	UL 1310 / PSE
EMI	EN55015 / Meets FCC Part15
WITHSTAND VOLTAGE	I/P-O/P : 4.242 kVdc I/P-CASE:4 kVdc
ISOLATION RESISTANCE	I/P-O/P :100M Ω / 500 Vdc / 25°C / 70% RH
DIMENSION (L*W*H)	97.5 * 40 * 30.5 mm 【3.84 * 1.57 * 1.2 inch】

- (1) All parameters specified at 230 Vac input unless otherwise noted.
- (2) All specifications typical at 25°C, unless otherwise noted, at normal line and load.
- (3) Ripple and noise measured directly at pins/terminals at nom. load, 0.1uF bypass and 47uF electrolytic, pk-pk at 20MHz bandwidth.
- (4) Specified for free-air convection cooling.
- (5) Minimum load is NOT required for proper operation .
- (6) 100% Production tested.

\* REFERENCE: [www.linkcom.com.tw](http://www.linkcom.com.tw)

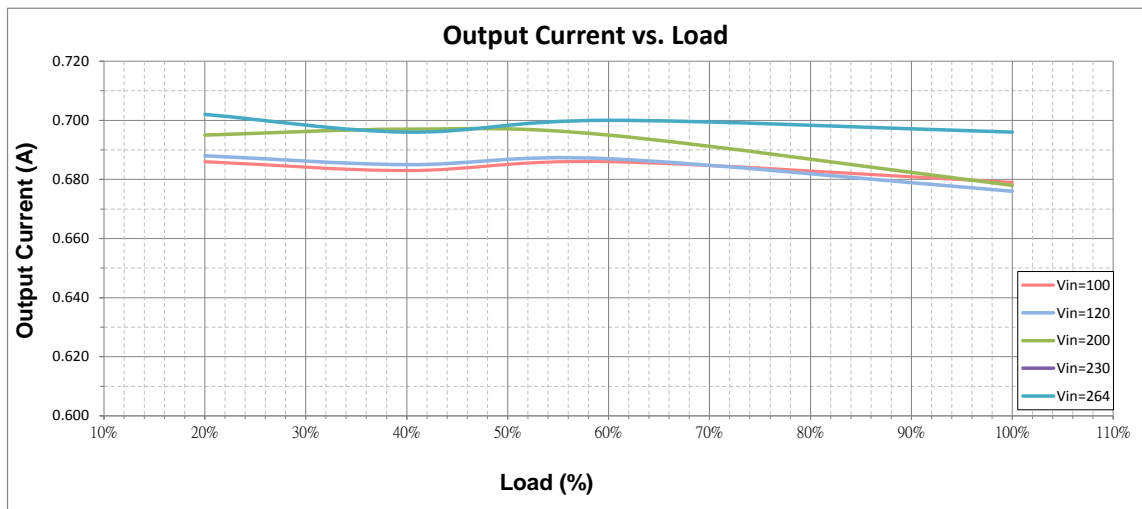
\* Please contact [sales@linkcom.com.tw](mailto:sales@linkcom.com.tw), [sales@linkcomusa.com](mailto:sales@linkcomusa.com) for more information

**DIMENSIONS**



\* REFERENCE: [www.linkcom.com.tw](http://www.linkcom.com.tw)

**Output Current vs. Load(BPHE010C701)**



**Efficiency vs. Load(BPHE010C701)**

