

**PLEASE CHECK WWW.MOLEX.COM FOR LATEST PART INFORMATION**

**Part Number:** **0760151103**  
**Status:** **Active**  
**Overview:** GbX I-Trac™ Backplane Connector System  
**Description:** GbX I-Trac™ Vertical Header Module, 1.85mm by 3.70mm Pitch, Unguided, Open Ends, 7 Rows, 10 Columns, 140 Circuits, Mating Pin Length 4.70mm

**Documents:**

[3D Model](#) [Packaging Specification PK-70873-802 \(PDF\)](#)  
[Drawing \(PDF\)](#) [RoHS Certificate of Compliance \(PDF\)](#)  
[Product Specification PS-75710-999 \(PDF\)](#)

**Agency Certification**

UL E29179

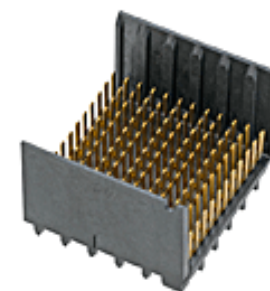
**General**

Product Family Backplane Connectors  
Series 76015  
Application Backplane, Midplane, Orthogonal  
Component Type PCB Header  
Overview GbX I-Trac™ Backplane Connector System  
Product Name GbX I-Trac™  
UPC 800756824826

**Physical**

Circuits (Loaded) 140  
Circuits (maximum) 140  
Color - Resin Black  
Durability (mating cycles max) 200  
First Mate / Last Break No  
Flammability 94V-0  
Guide to Mating Part No  
Keying to Mating Part None  
Material - Metal High Performance Alloy (HPA)  
Material - Plating Mating Gold  
Material - Plating Termination Tin  
Material - Resin High Temperature Thermoplastic  
Net Weight 4.980/g  
Number of Columns 10  
Number of Pairs 4, Open Pin Field  
Number of Rows 7  
Orientation Vertical  
PC Tail Length 2.10mm  
PCB Locator No  
PCB Retention None  
PCB Thickness - Recommended 1.60mm  
Packaging Type Tray  
Pitch - Mating Interface 1.85mm, 3.70mm  
Pitch - Termination Interface 1.00mm, 2.70mm  
Plating min - Mating 0.762µm  
Plating min - Termination 0.762µm  
Polarized to PCB No  
Stackable Yes  
Surface Mount Compatible (SMC) Yes  
Temperature Range - Operating 85°C  
Termination Interface: Style Through Hole - Compliant Pin

**Electrical**



Series image - Reference only

**EU ELV**

**Not Relevant**

**EU RoHS**

**Compliant**

**China RoHS**

**REACH SVHC**

Not Contained Per  
-ED/79/2015 (17  
December 2015)

**Halogen-Free**

**Status**

**Low-Halogen**

**Need more information on product environmental compliance?**

Email [productcompliance@molex.com](mailto:productcompliance@molex.com)  
Please visit the [Contact Us](#) section for any non-product compliance questions.

China ROHS  
ELV

Green Image  
Not Relevant

**Search Parts in this Series**

76015 Series

**Mates With**

76020 GbX I-Trac™ Right Angle Receptacle Module

**Use With**

78227 GbX I-Trac™ Vertical Power Receptacle. 75234 Backplane Free Standing Guide Pin

**Application Tooling | FAQ**

*Tooling specifications and manuals are found by selecting the products below. Crimp Height Specifications are then contained in the Application Tooling Specification document.*

**Global**

**Description**

**Product #**

Current - Maximum per Contact	1.0A
Data Rate	12.0 Gbps
Shield Type	N/A
Shielded	No
Voltage - Maximum	120V AC (RMS)/DC

**Solder Process Data**

Lead-free Process Capability	N/A
------------------------------	-----

**Material Info****Reference - Drawing Numbers**

Packaging Specification	PK-70873-802
Product Specification	PS-75710-999
Sales Drawing	SD-76015-001

Backplane Insertion Tool for Signal	<u>0621005110</u>
Contact Insertion Press-In Tool for Vertical Header 7-Row, 10-Column	<u>0622018609</u>

This document was generated on 06/10/2016

**PLEASE CHECK [WWW.MOLEX.COM](http://WWW.MOLEX.COM) FOR LATEST PART INFORMATION**