



Common Mode Choke - G6252-AL

This low cost, high performance choke coil is designed to reduce AC line conducted common mode noise produced by switching power supplies.

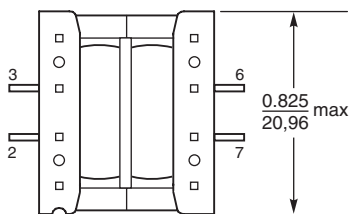
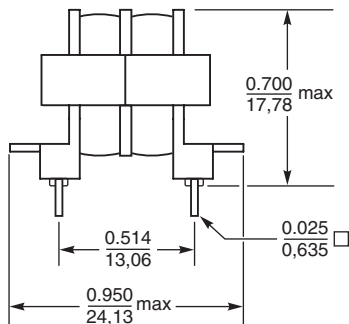
For free evaluation samples, contact Coilcraft or visit www.coilcraft.com.

- 2500 Vrms, one minute isolation between windings.
- UL1446 Class B (130°C) Insulation System (UL File E83628)

Part number	Current rating ¹	DCR max ² (Ohms)	Inductance ³ min (mH)	Leakage inductance ⁴ max (μH)	SRF ⁵ typ (kHz)	Capacitance ⁶ max (pF)
G6252-AL	300 mA	2.1	10.5	450	240	7.0

1. Based on 300 circular mils/Amp. Temperature rise is less than 10°C.
2. DCR is maximum per winding.
3. Inductance is per winding; measured at 1.0 Vrms, 15.75 kHz.
4. Leakage inductance measured at 1.0 Vrms, 15.75 kHz between pins 2 and 3 with pins 7 and 6 shorted.
5. SRF is typical per winding.
6. Capacitance measured at 1.0 Vrms, 15.75 kHz between pins 2 and 7.
7. Operating temperature range -40°C to +85°C.
8. Electrical specifications at 25°C.

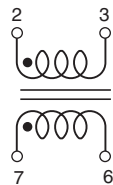
Dimensions



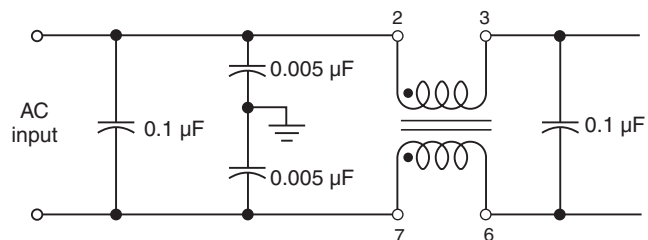
Bottom View

Weight: 9.5 g
Packaged 49 per tray

Schematic



Typical Application



Typical Attenuation (Ref: 50 Ohms)

