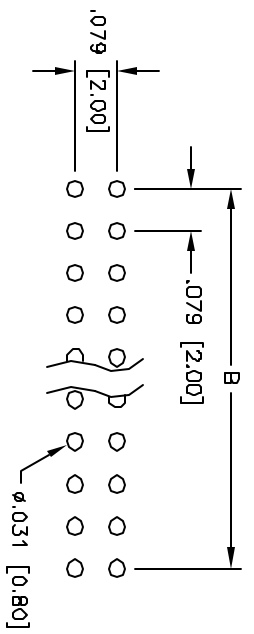
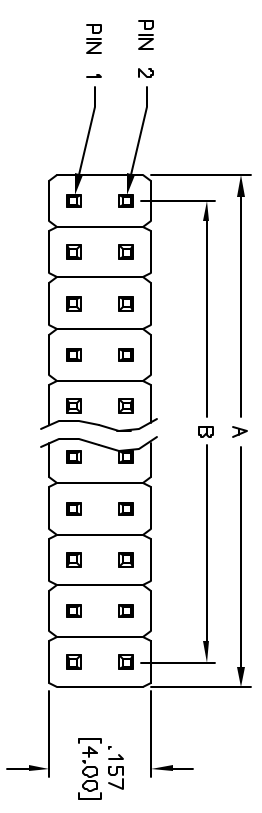
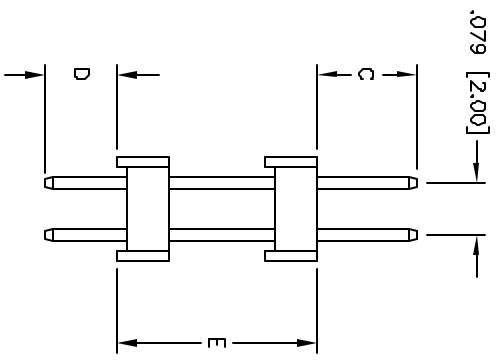
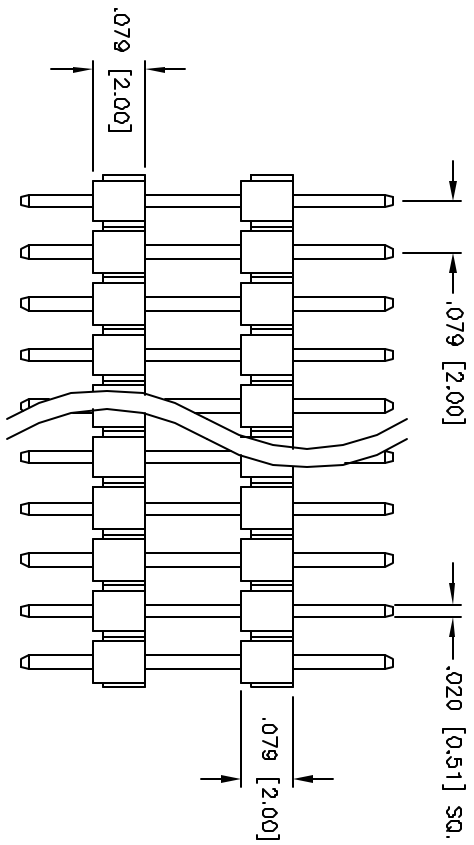


APPROVED: _____
 DATE: _____ TITLE: _____

Rev	AWO #	Description	Date	Appr
-		RELEASED	4/1/05	



RECOMMENDED
PCB LAYOUT



Positions: 2 thru 80
 A = .079 [2.00] x No. of Positions per Row
 B = .079 [2.00] x No. of Spaces

SPECIFICATIONS:
 Material:
 Insulator: PBT, rated UL 94V-0
 Insulator color: Black
 Contacts: Brass
 Plating:
 Gold flash over Nickel underplate overall
 Electrical:
 Operating voltage: 250 VAC max
 Current rating: 1 Amp max
 Contact resistance: 20 mohms max
 Insulation resistance: 5,000 Mohms min @ 500 VDC
 Dielectric withstanding voltage: 1,000 VAC for 1 minute
 Temperature Rating:
 Operating temperature: -55°C to +105°C
 Environmental:
 Lead free, RoHS compliant
 Recommended soldering temp: 230°C for 5 seconds



UNLESS OTHERWISE SPECIFIED ALL DIMENSIONS ARE NICHES [MM] TOLERANCES: EXCEPT AS NOTED INCHES .10 ± .010 .020 ± .010 .015 ± .010 .015 ± .010		DATE 4/1/05	
DRAWN	SS	DATE	
CHECKED			
APPROVED			
TITLE .079 [2.00] DUAL ROW PIN HEADER DUAL INSULATOR, GOLD PLATED		SIZE PART NO. D2PH-2-X-1J-C/D/E	
909 Rahway Avenue, Union, NJ 07083 Phone: 908-887-5000 Fax: 908-887-5710		SCALE NIB SHEET 1 OF 1	