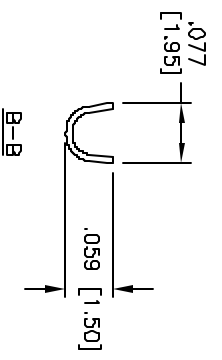
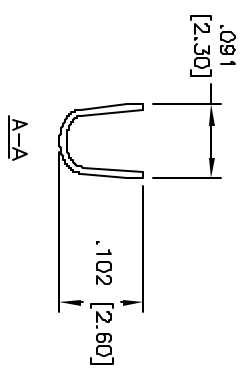
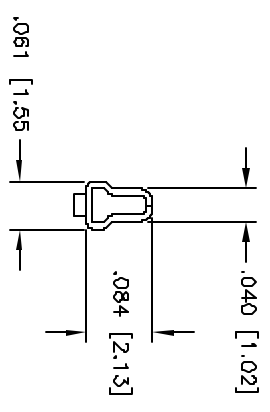
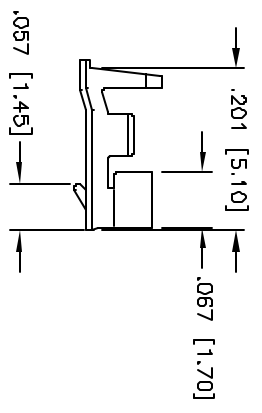
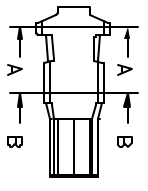


Rev	AWG #	Description	Date	Appr
-		RELEASED	4/7/05	

APPROVED: \_\_\_\_\_ TITLE: \_\_\_\_\_  
 DATE: \_\_\_\_\_



**SPECIFICATIONS:**

Material: Phosphor Bronze  
 Contact: Tin over Copper underplate overall  
 Plating:  
 Electrical:  
 Operating voltage: 100 VAC max  
 Wire range: 22-28 AWG  
 Current rating: 1 Amp max  
 Contact resistance: 20 mohms max  
 Temperature Rating:  
 Operating temperature: -25°C to +85°C  
 Packaging:  
 R = 10,000 piece reel  
 B = 1,000 pieces loose cut  
 Environmental:  
 Lead free, RoHS compliant



UNLESS OTHERWISE SPECIFIED ALL DIMENSIONS ARE NICHES [MM] TOLERANCES: EXCEPT AS NOTED INCHES	
X .10	ØX ± .10
XX ± .020	ØXXX ± .019
XXX ± .015	ØXXX ± .010
APPROVALS	DATE
DRAWN SS	4/7/05
CHECKED	
APPROVED	

**ADAM TECH**  
 909 Rahway Avenue, Union, NJ 07083  
 Phone: 908-687-5000 Fax: 908-687-5710

**CRIMP CONTACT**

TITLE	SIZE	PART NO.	SCALE	SHEET	OF
CRIMP CONTACT	X	2CTB-X	NIB	1	1
REV.					