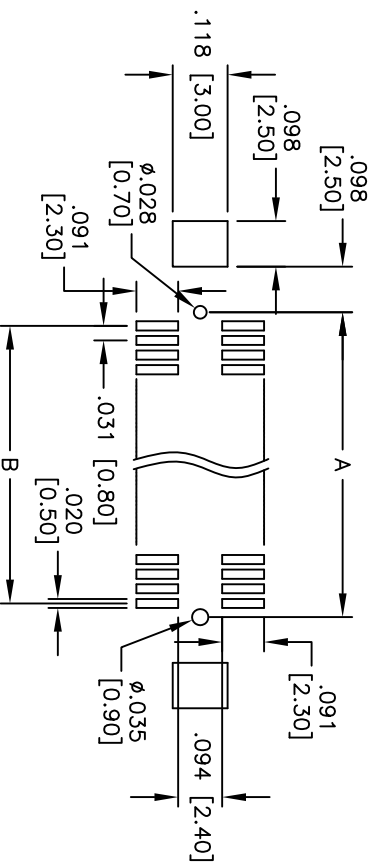
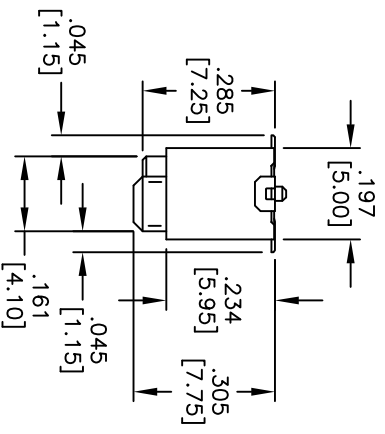
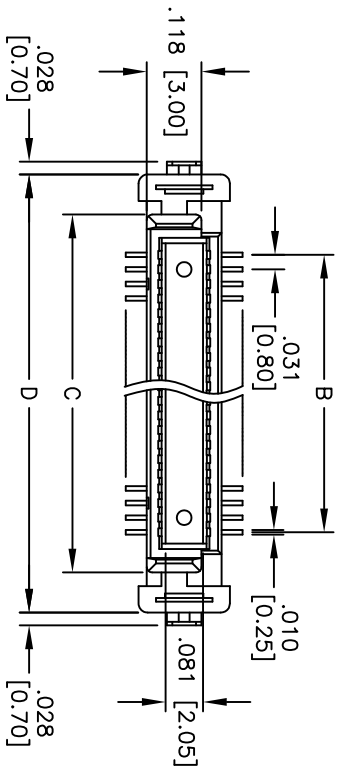
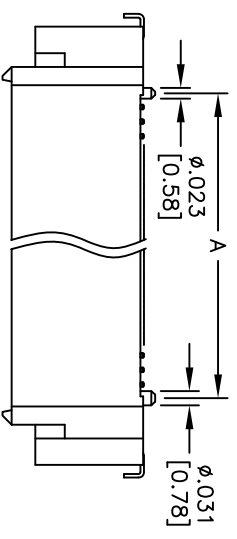


Rev	AWO #	Description	Date	Appr
-		RELEASED	11/29/10	

APPROVED: \_\_\_\_\_

DATE: \_\_\_\_\_ TITLE: \_\_\_\_\_



RECOMMENDED PCB LAYOUT

Positions: 20, 30, 40, 50, 60

- A = .031 [0.80] x (No. of Contacts per row - 1) + .059 [1.50]
- B = .031 [0.80] x (No. of Contacts per row - 1)
- C = .031 [0.80] x (No. of Contacts per row - 1) + .173 [4.40]
- D = .031 [0.80] x (No. of Contacts per row - 1) + .346 [8.80]

**ADAM TECH**

909 Railway Avenue, Union, NJ 07083  
 Phone: 908-687-5000 Fax: 908-687-5710

TITLE  
 .031 [0.80] BOARD TO BOARD PLUG  
 .305 [7.75] HEIGHT, SMT TYPE

UNLESS OTHERWISE SPECIFIED ALL DIMENSIONS ARE IN INCHES [MM]		TOLERANCES: EXCEPT AS NOTED	
.X	± .10	ØXX	± .10
.XX	± .020	ØXXX	± .015
.XXX	± .015	ØXXXX	± .010
APPROVALS		DATE	
DRAWN	AY	11/29/10	
CHECKED	JL	11/29/10	
APPROVED			
SIZE	PART NO.	REF:	SHEET 1 OF 1
X	BB8+PED-XX-G-7.75-TR	S0028T	
SCALE:	NTS		

**SPECIFICATIONS:**  
 Material: Insulator: Hi-temp thermoplastic, rated UL 94V-0  
 Insulator color: Black  
 Contacts: Copper Alloy  
 Hold down: Copper Alloy  
 Plating: Gold flash over Nickel underplate overall.  
 Electrical: Operating voltage: 200 VAC max.  
 Current rating: 0.5 Amps max.  
 Contact resistance: 70 mohms max. initial  
 Insulation resistance: 100 Mohms min.  
 Environmental: Lead free, RoHS compliant  
 Recommended soldering temp: 260°C for 5 seconds

