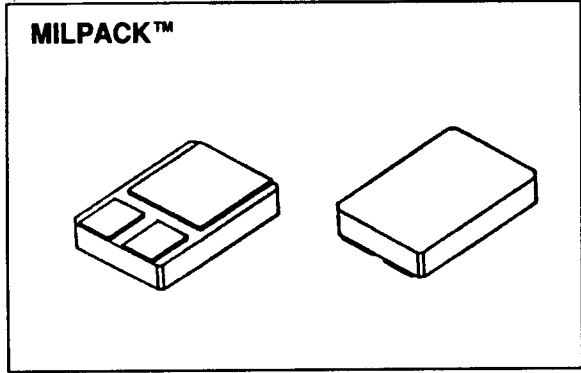


15R6

**50 AMP
 150 VOLTS
 50nsec
 EPID[®]
 RECTIFIER**

Designer's Data Sheet

- FEATURES:**
- EPID[®] High Voltage Schottky Process
 - Minimal recovery time and leakage increase over temperature versus comparable rectifiers
 - Lower capacitance than conventional Schottkys
 - Hyper Fast Recovery: 50 nsec Maximum
 - Higher Surge Ratings available
 - Hermetically Sealed Surface Mount Package
 - Gold Eutectic Die Attach available
 - Ultrasonic Aluminum Wire Bonds
 - Higher Voltage classes available
 - TX, TXV and Space Level Screening Available



MAXIMUM RATINGS

RATING	SYMBOL	VALUE	UNIT
Peak Repetitive Reverse and DC Blocking Voltage 15R6	VRRM VRWM VR	150	Volts
Average Rectified Forward Current (Resistive Load, 60Hz, Sine Wave, TA=25°C)	IO	50	Amps
Peak Surge Current (8.3 ms Pulse, Half Sine Wave, TA=25°C)	IFSM	400	Amps
Operating and storage temperature	Top & Tstg	-65 to +200	°C
Maximum Thermal Resistance Junction to Case, note 3	RθJC	1.5	°C/W

15R6

PRELIMINARY



SOLID STATE DEVICES, INC

14849 Firestone Boulevard · La Mirada, CA 90638
 Phone: (714) 670-SSDI (7734) · Fax: (714) 522-7424

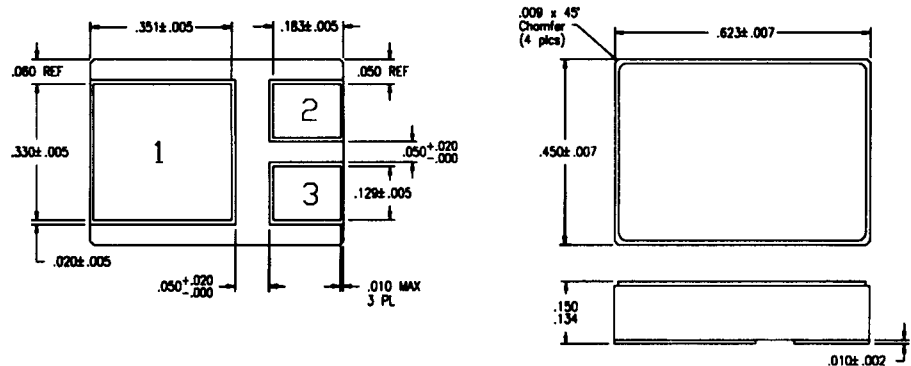
ELECTRICAL CHARACTERISTICS

CHARACTERISTICS	SYMBOL	MAXIMUM	UNIT
Instantaneous Forward Voltage Drop (IF = 25 Adc, TA=25°C, 300µs Pulse) note 1 (IF = 50 Adc, TA=25°C, 300µs Pulse) note 1	VF	0.87 0.95	Vdc
Instantaneous Forward Voltage Drop (IF = 25 Adc, TA= 100°C, 300µs Pulse) note 1 (IF = 25 Adc, TA= - 55°C, 300µs Pulse) note 1	VF	0.77 1.0	Vdc
Reverse Leakage Current (Rated VR, TA=25°C, 300µs pulse minimum)	IR	100	µA
Reverse Leakage Current (Rated VR, TA=100°C, 300µs pulse minimum)	IR	2	mA
Junction Capacitance (VR = 10 Vdc, TA=25°C, f= 1 MHz)	CJ	250	pf
Reverse Recovery Time (IF=500mA, IR=1 A, IRR=250mA, TA=25°C)	trr	50	nsec

CASE OUTLINE: MILPACK

PIN 1: CATHODE
PIN 2: ANODE
PIN 3: ANODE

NOTE 1:
 Connect pins 2 & 3
 in application.



TYPICAL OPERATING CURVES
 TA=25°C Unless otherwise specified

