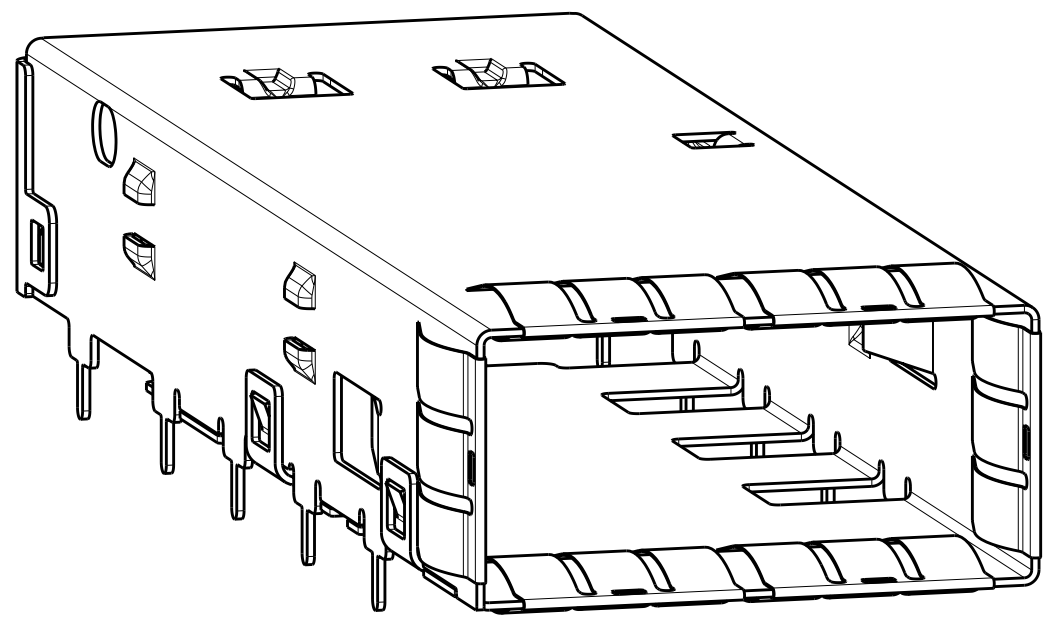
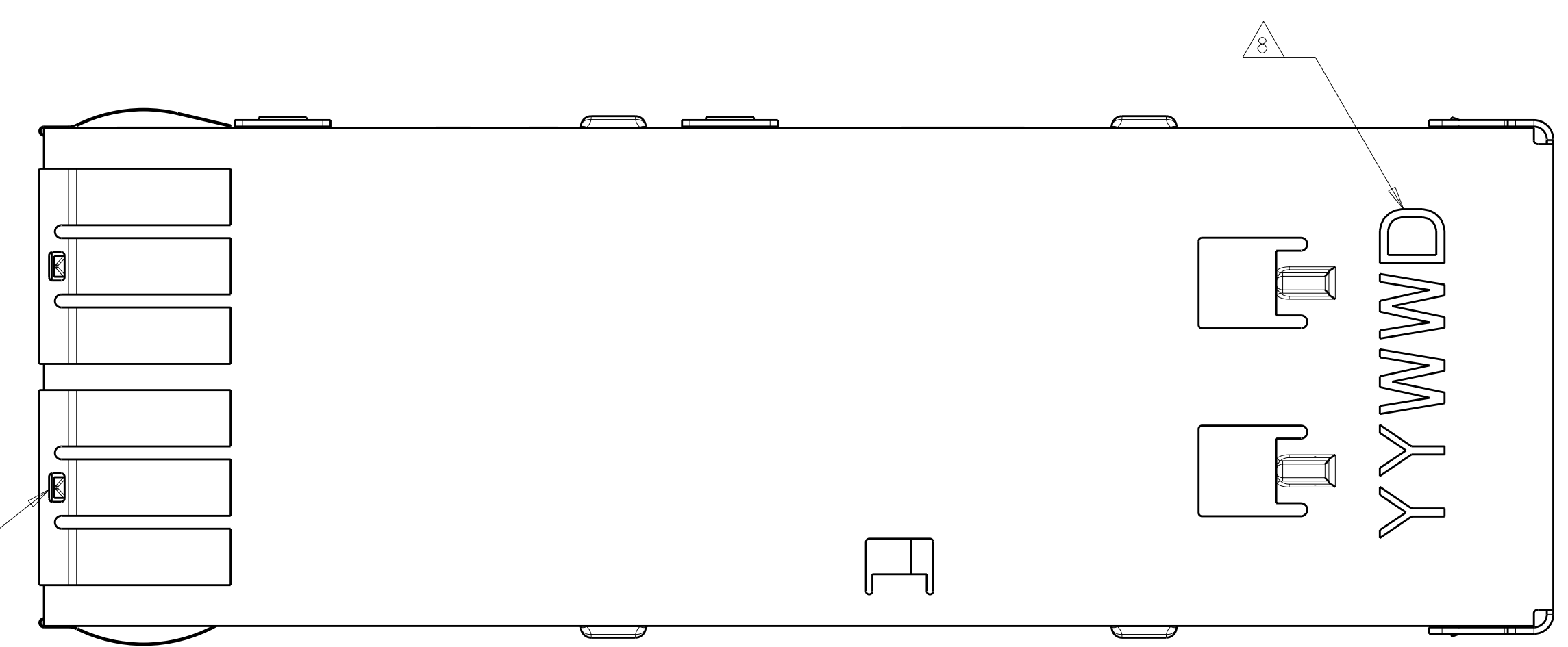


| LOC | DIST | REV | DATE      | BY  | CHKD | APVD |
|-----|------|-----|-----------|-----|------|------|
| GP  | 00   |     |           |     |      |      |
|     |      | 3   | 29OCT2009 | CR  | JP   |      |
|     |      | 4   | 08DEC2010 | CJV | EJB  |      |

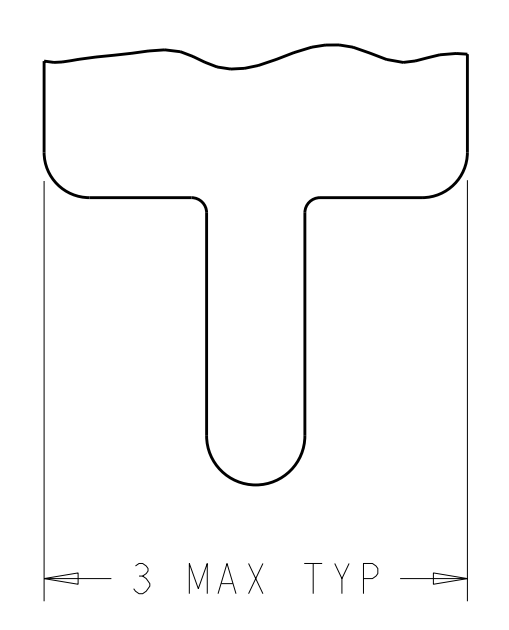
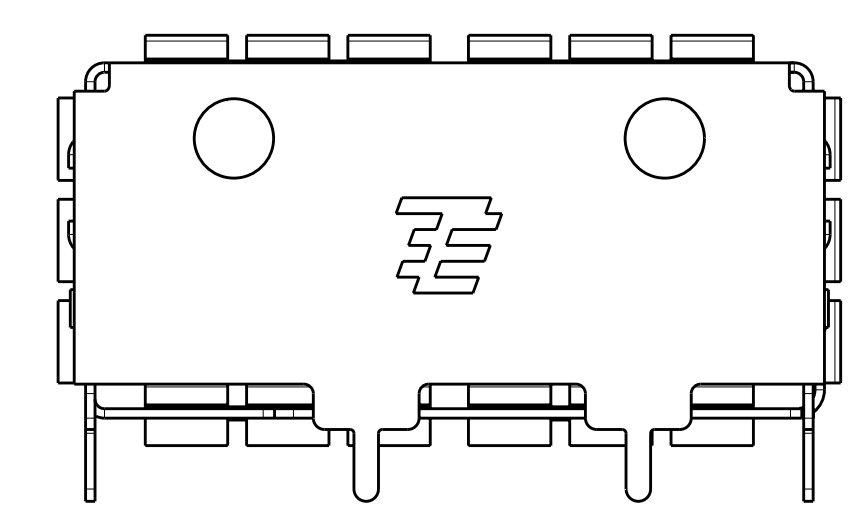
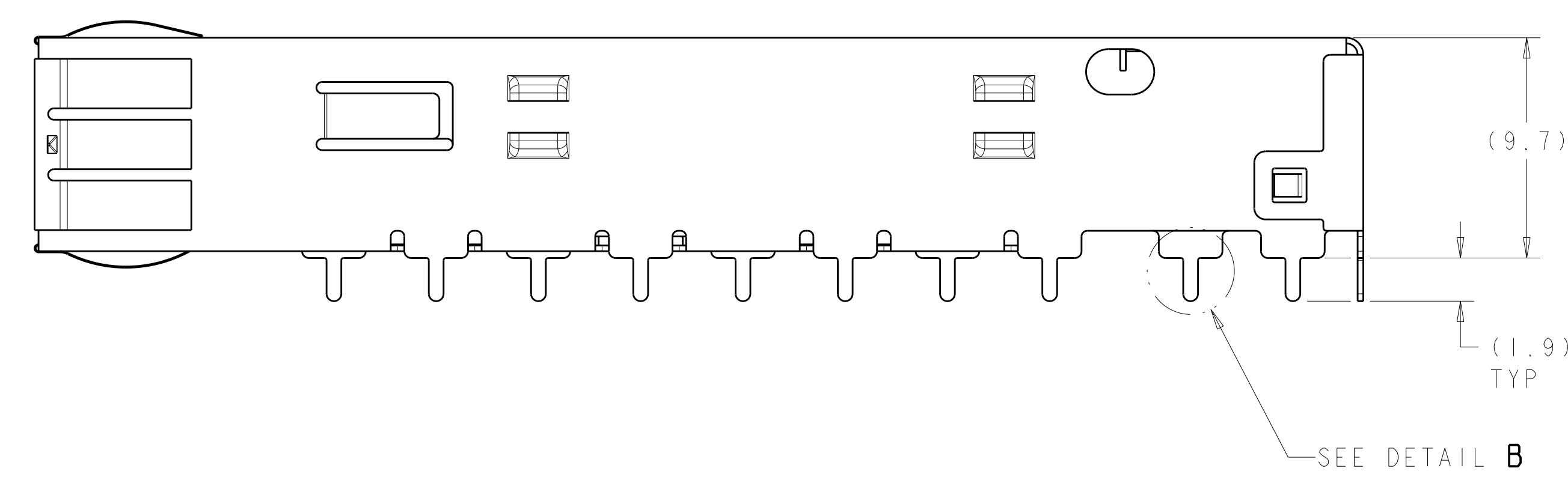
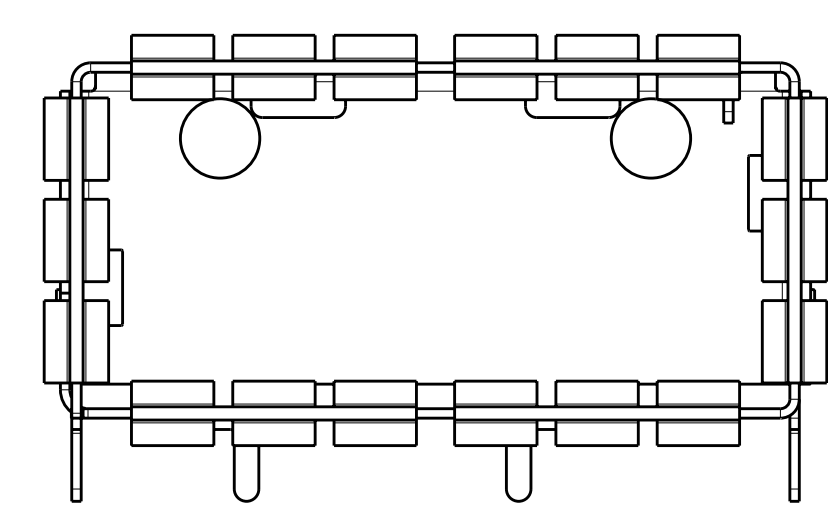


ISOMETRIC VIEW  
SCALE 4:1

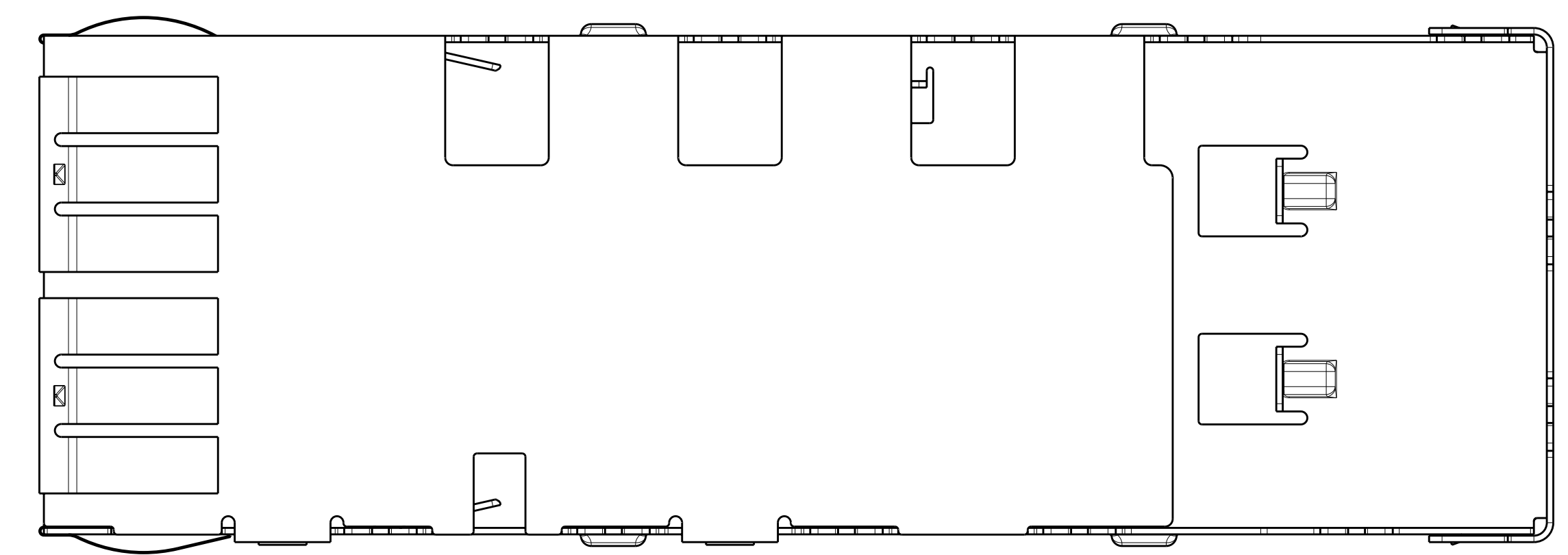
Sn42Bi58 SOLDER  
6 PLACES



- 1 MATERIAL:  
CAGE - 0.25 THICK NICKEL SILVER  
SPRINGS - COPPER ALLOY
- 2 MINIMUM PITCH DIMENSION.
- 3. MATES WITH QSFP MSA COMPATIBLE TRANSCEIVER.
- 4 DATUM AND BASIC DIMENSIONS ESTABLISHED BY CUSTOMERS.
- 5. MINIMUM PC BOARD THICKNESS:  
SINGLE SIDED: 1.45mm  
DOUBLE SIDED: 2.2mm
- 6 DATUM -A- IS TOP SURFACE OF THE HOST BOARD.
- 7 SURFACE TRACES PERMITTED WITHIN THIS AREA EXCEPT WHERE CAGE STANDOFFS, SHOWN IN DETAIL J, CONTACT PC BOARD.
- 8 DATE CODE (YYWWD) MARKED APPROXIMATELY AS SHOWN.
- 9 FINISH:  
SPRINGS - 0.8µm MIN TIN OVER 0.8µm MIN NICKEL,  
NON-PLATED EDGES PERMISSIBLE.
- 10. PRODUCT HAS NOT COMPLETED QUALIFICATION TESTING.



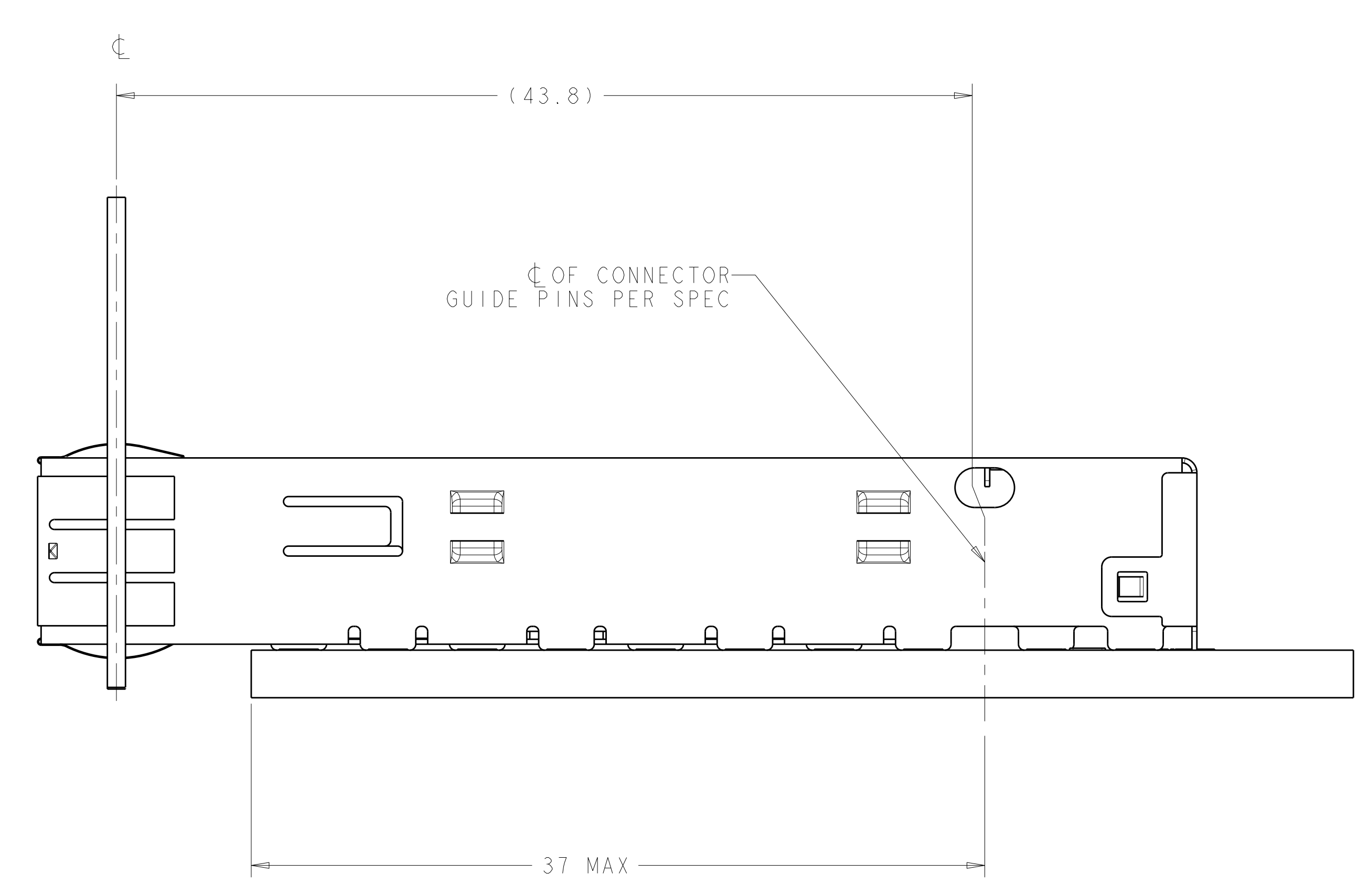
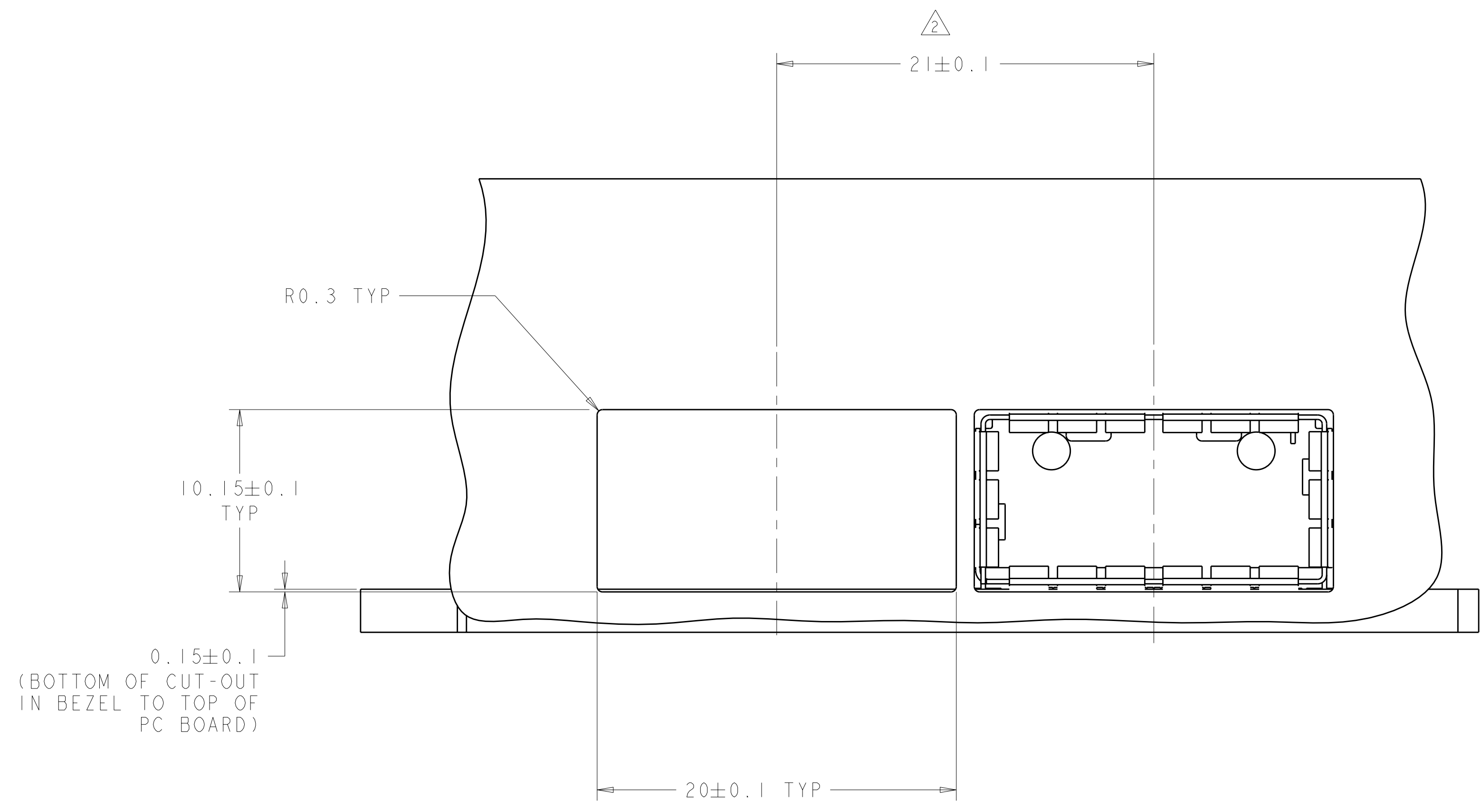
DETAIL B  
SCALE 20:1



2110487-1  
PART NUMBER

|                       |  |   |  |   |  |   |  |
|-----------------------|--|---|--|---|--|---|--|
| DIMENSIONS:<br>mm<br> |  | TOLERANCES UNLESS OTHERWISE SPECIFIED:<br>9 PLC ±0.1<br>1 PLC ±0.1<br>5 PLC ±0.1<br>4 PLC ±<br>ANGLES ±<br>FINISH ± |  | DWN 22SEP2009<br>CHK Z.M.BEAM<br>APVD J.R.PETERSON<br>P.H.WERTZ |  | Tyco Electronics<br>Harrisburg, PA 17105-3608 |  |
| MATERIAL<br>          |  | FINISH<br>  |  | PRODUCT SPEC<br>108-2286<br>APPLICATION SPEC<br>114-13217       |  | SIZE CAGE CODE DRAWING NO<br>A100779C=2110487 |  |
| CUSTOMER DRAWING      |  |   |  | RESTRICTED TO   |  | SCALE 5:1 SHEET 1 OF 5 REV 4                  |  |

| LOC | DIST | REV | DATE | BY | APPD |
|-----|------|-----|------|----|------|
| GP  | 00   |     |      |    |      |
|     |      |     |      |    |      |
|     |      |     |      |    |      |

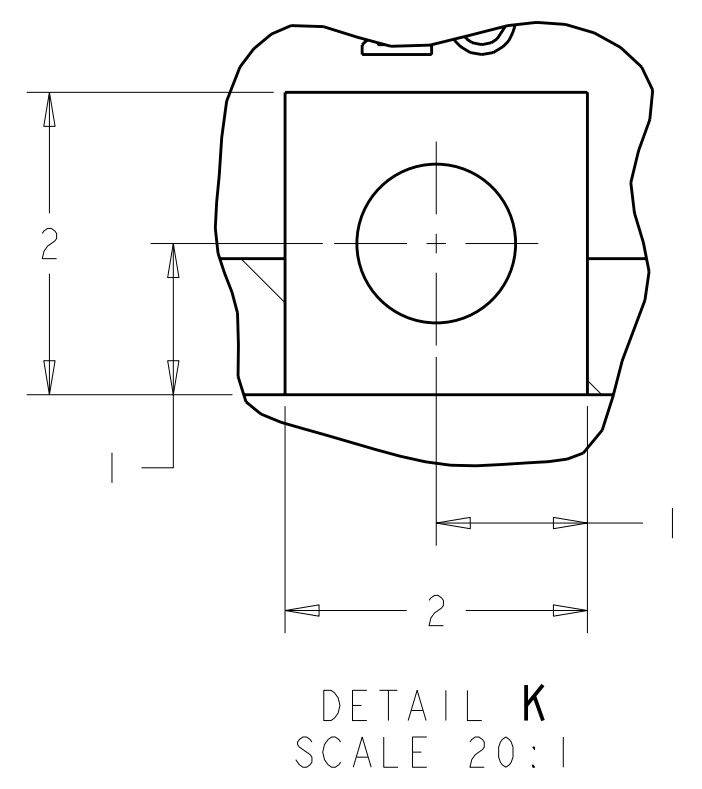
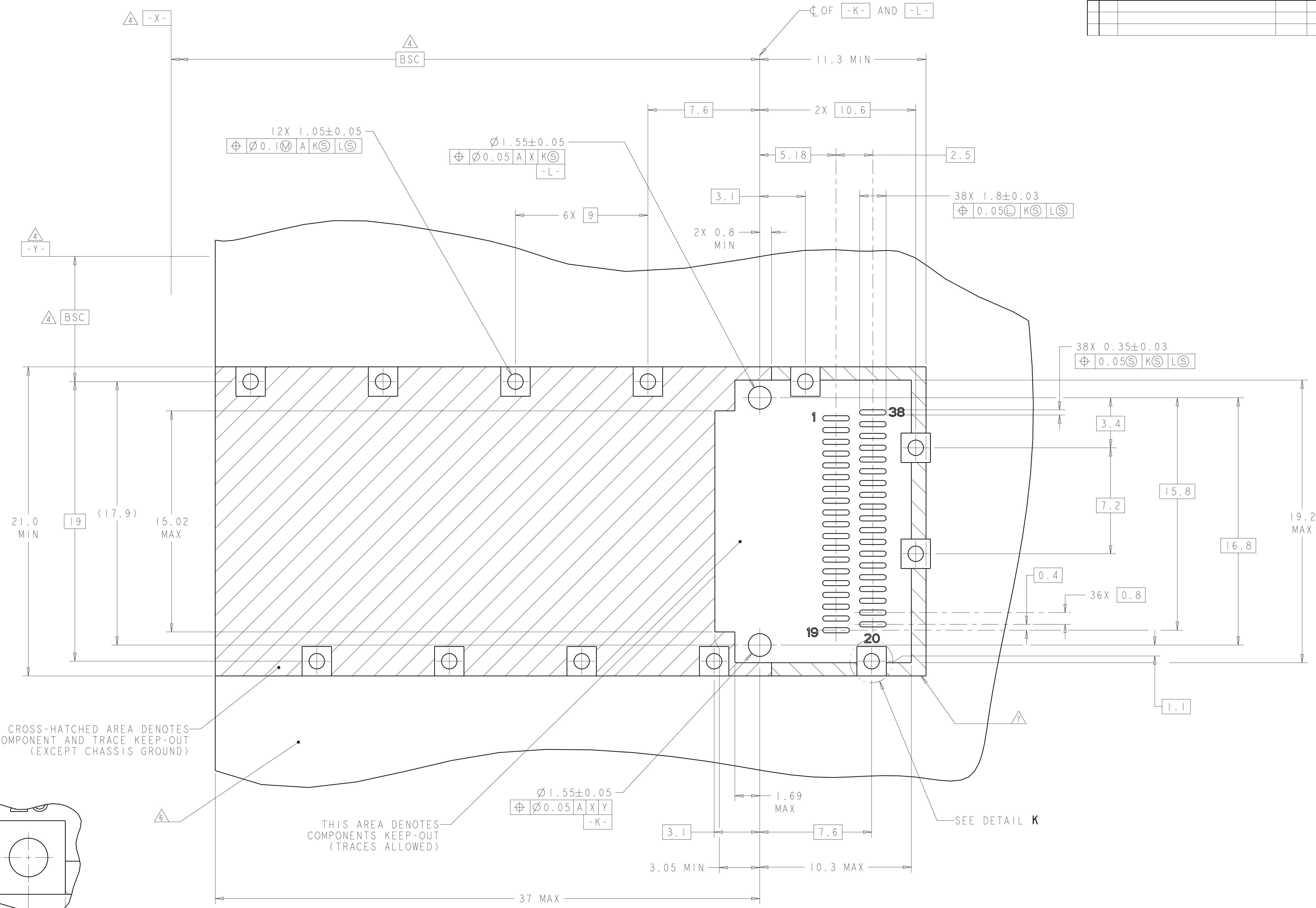


|                        |  |   |  |  |  |   |  |
|------------------------|--|---|--|--|--|---|--|
| DIMENSIONS:<br>mm<br>  |  | TOLERANCES UNLESS OTHERWISE SPECIFIED:<br>9 PLC $\pm 0.1$<br>1 PLC $\pm 0.1$<br>2 PLC $\pm 0.1$<br>3 PLC $\pm 0.1$<br>4 PLC $\pm$<br>ANGLES $\pm$<br>FINISH |  | DWN 22SEP2009<br>CHK Z.M.BEAM<br>J.R.PETERSON<br>APVD P.H.WERTZ<br>22SEP2009 |  | Tyco Electronics<br>Harrisburg, PA 17105-3608                                 |  |
| MATERIAL -<br>FINISH - |  | PRODUCT SPEC 108-2286<br>APPLICATION SPEC 114-13217<br>WEIGHT -<br>CUSTOMER DRAWING   |  | NAME OSFP<br>1X1 CAGE ASSEMBLY<br>SOLDER, THRU BEZEL                         |  | SIZE CAGE CODE DRAWING NO<br>A100779C-2110487<br>SCALE 5:1 SHEET 2 OF 5 REV 4 |  |

| LOC | DIST | REV | DATE | BY | APPD |
|-----|------|-----|------|----|------|
| GP  | 00   |     |      |    |      |

| REVISIONS |             |      |
|-----------|-------------|------|
| NO.       | DESCRIPTION | DATE |
| 1         | SEE SHEET 1 |      |



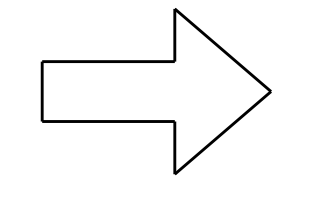
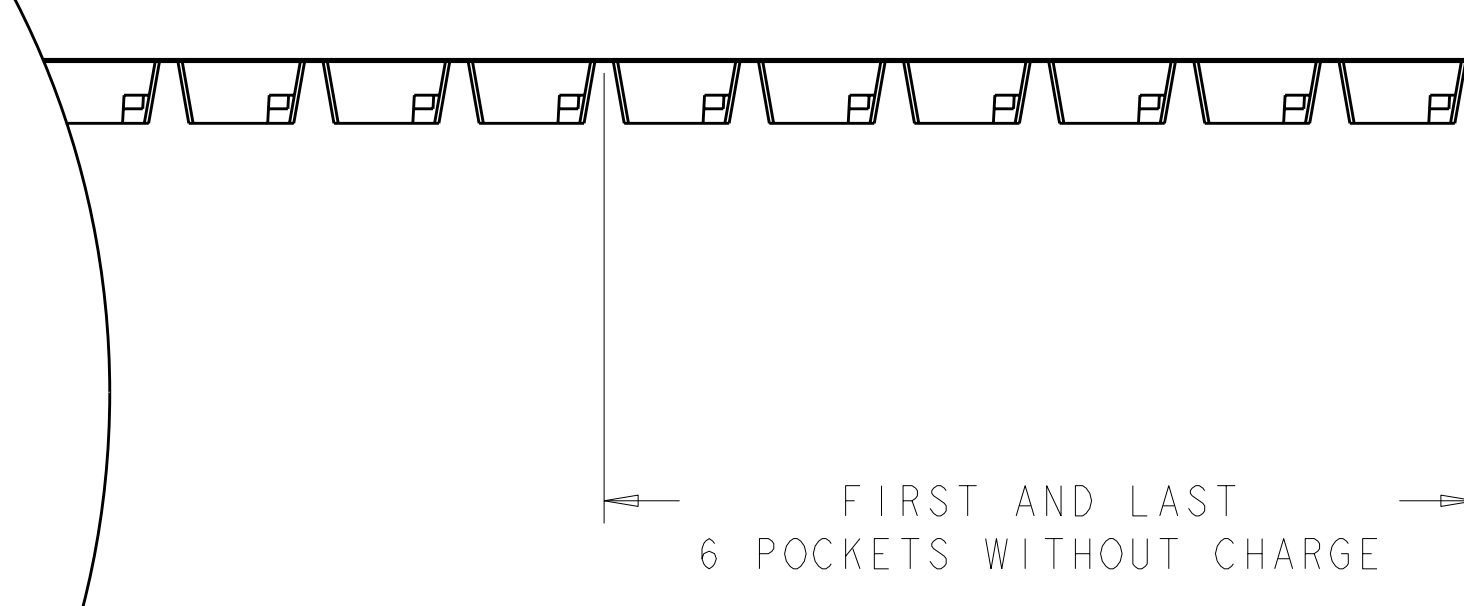
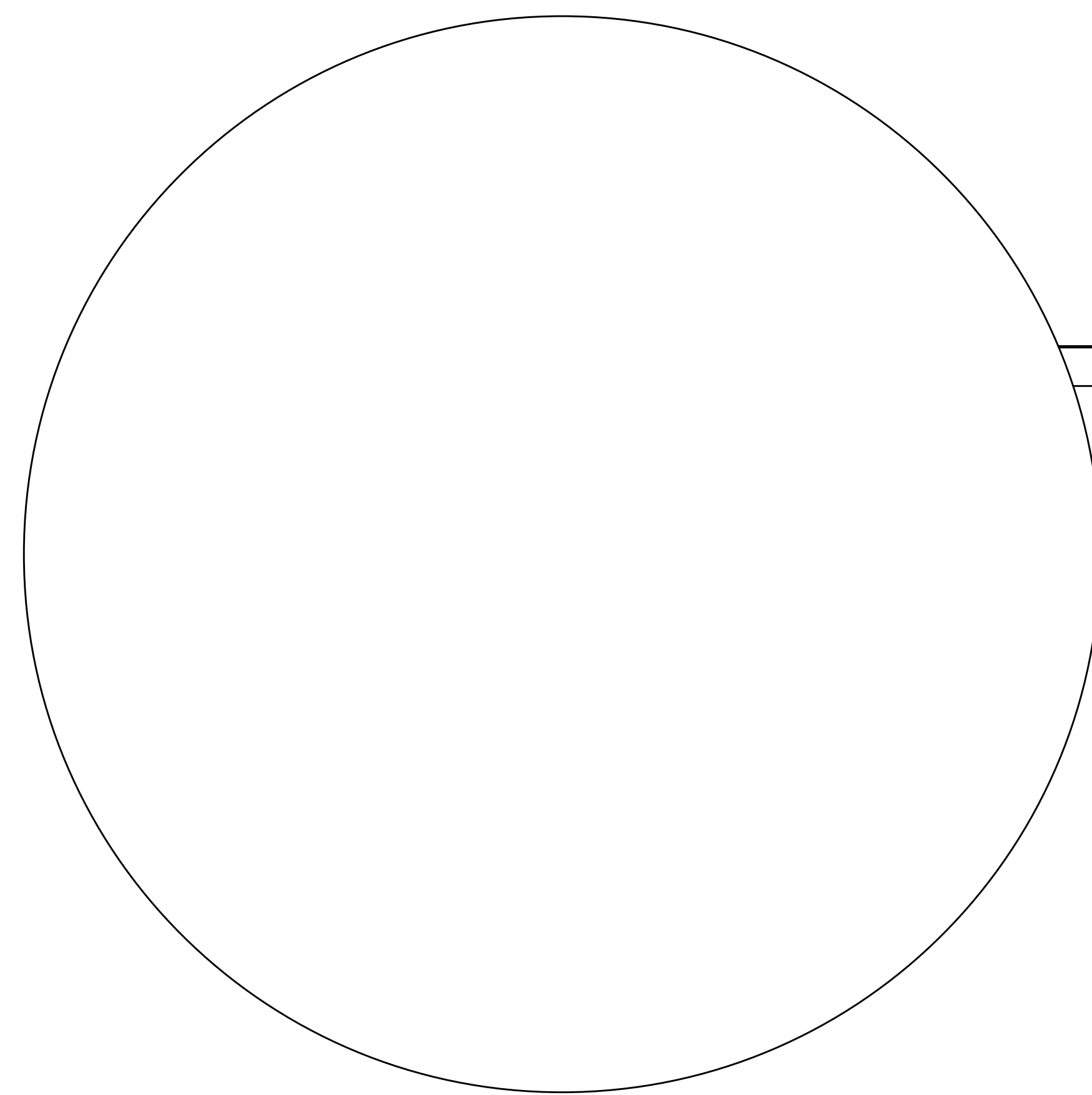
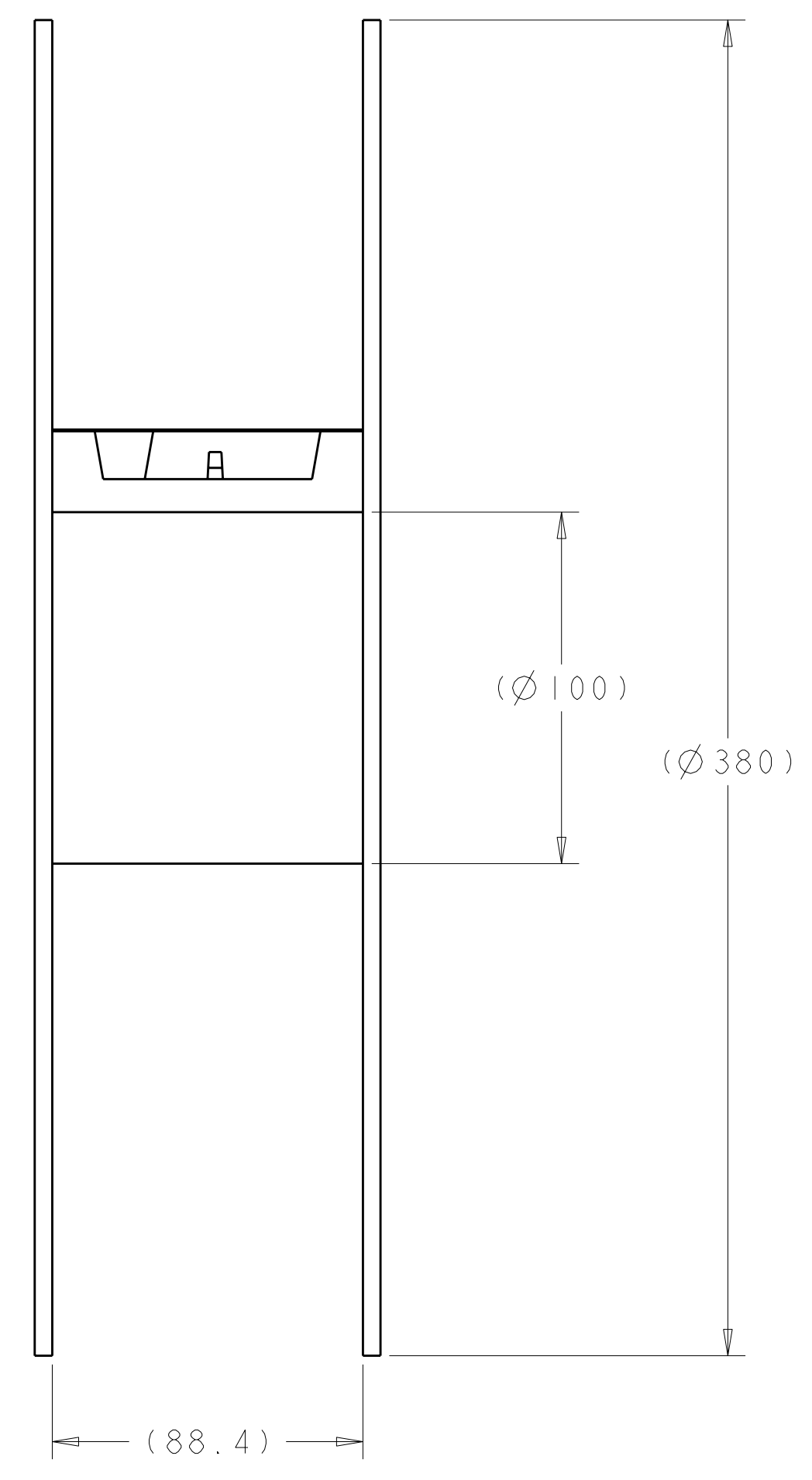
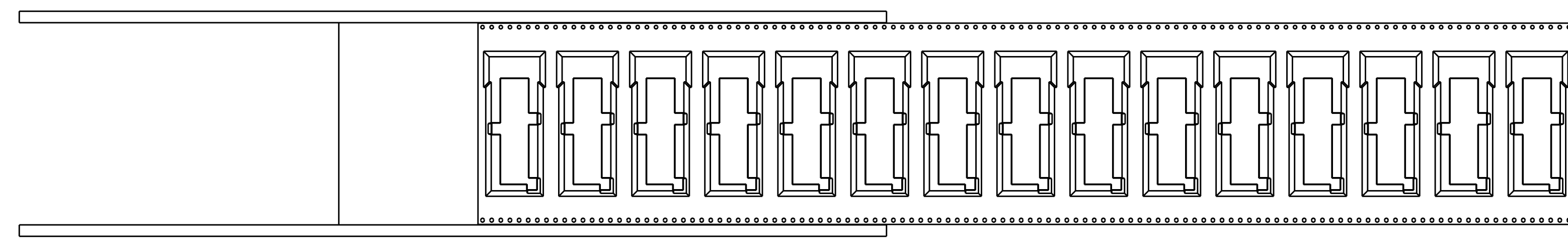
RECOMMENDED PC BOARD LAYOUT  
 SCALE 8:1

|                       |  |   |  |   |  |  |  |       |  |
|-----------------------|--|---|--|---|--|--|--|-------|--|
| DIMENSIONS:<br>mm<br> |  | TOLERANCES UNLESS OTHERWISE SPECIFIED:<br>9 PLC ±0.1<br>1 PLC ±0.1<br>5 PLC ±0.1<br>4 PLC ±<br>ANGLES ±<br>FINISH |  | DWN Z.M.BEAM 22SEP2009<br>CHK J.R.PETERSON 22SEP2009<br>APVD P.H.WERTZ 22SEP2009<br>NAME<br>PRODUCT SPEC<br>108-2286<br>APPLICATION SPEC<br>114-13217<br>WEIGHT<br>CUSTOMER DRAWING |  | Tyco Electronics<br>Harrisburg, PA 17105-3608<br>OSFP<br>1XI CAGE ASSEMBLY<br>SOLDER, THRU BEZEL<br>SIZE CAGE CODE DRAWING NO<br>A100779C=2110487<br>RESTRICTED TO |  |       |  |
| MATERIAL              |  | FINISH  |  | SCALE 5:1   |  | SHEET 3 OF 5   |  | REV 4 |  |

| LOC | DIST | REV | DATE | BY | CHKD | APVD |
|-----|------|-----|------|----|------|------|
| GP  | 00   |     |      |    |      |      |

| REVISIONS |             |      |    |
|-----------|-------------|------|----|
| NO.       | DESCRIPTION | DATE | BY |
| 1         | SEE SHEET 1 | -    | -  |

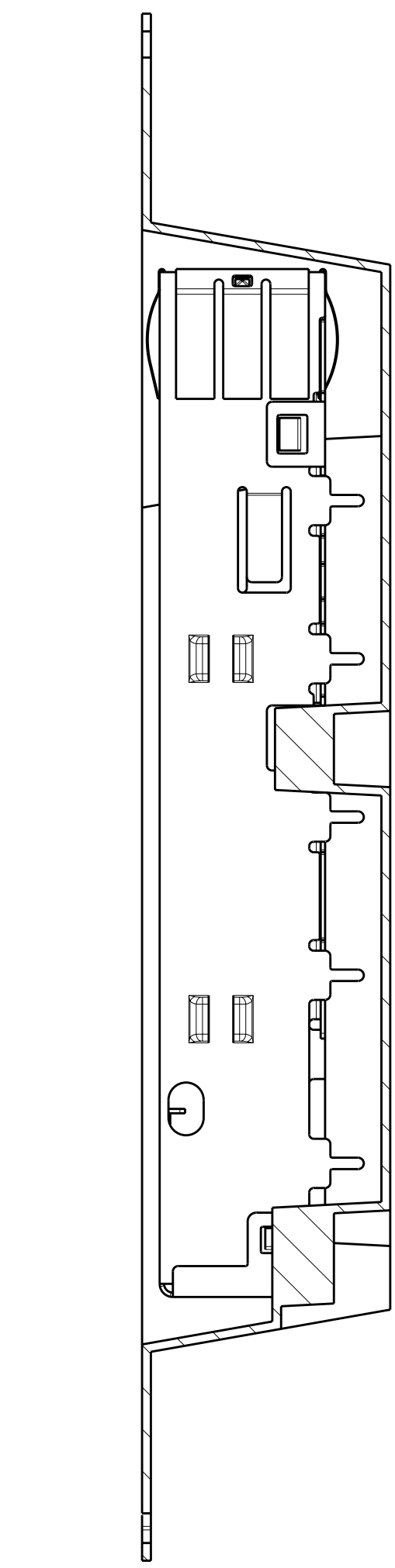
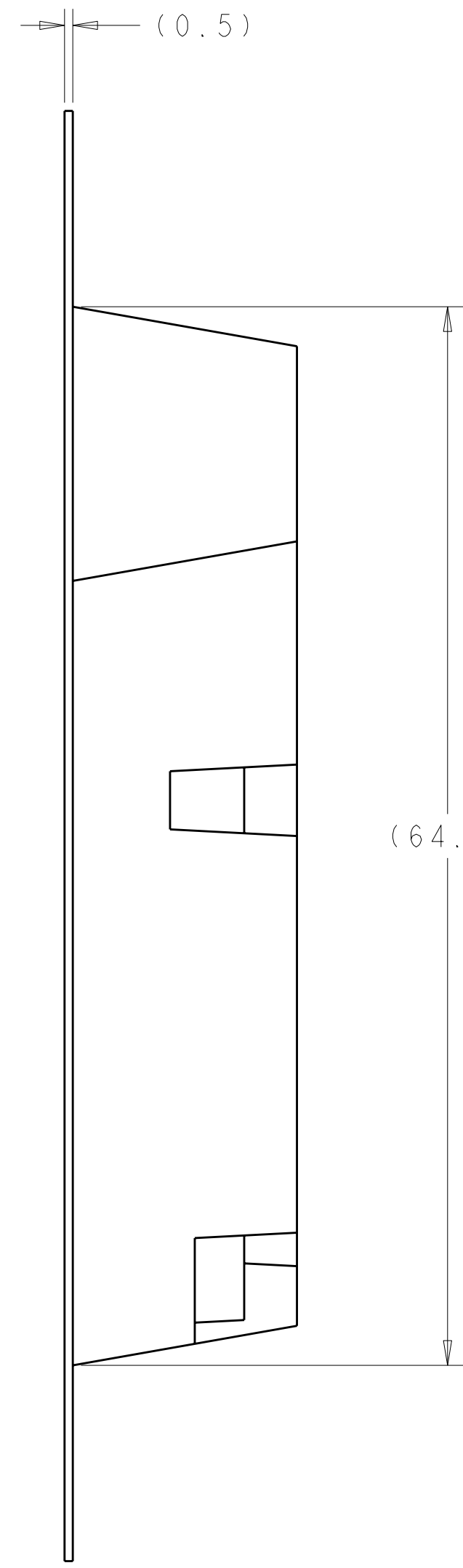
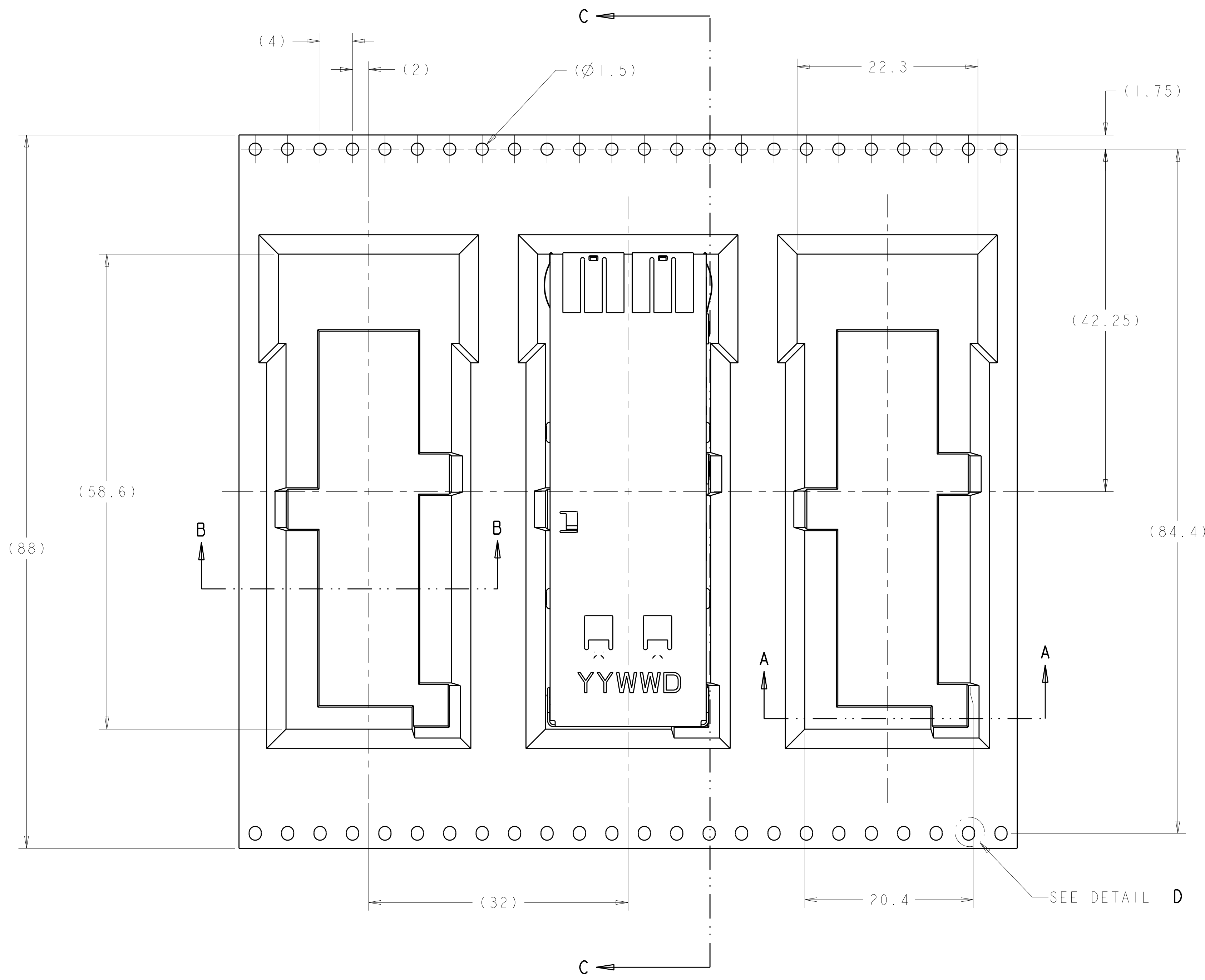


DIRECTION OFF TOP OF REEL

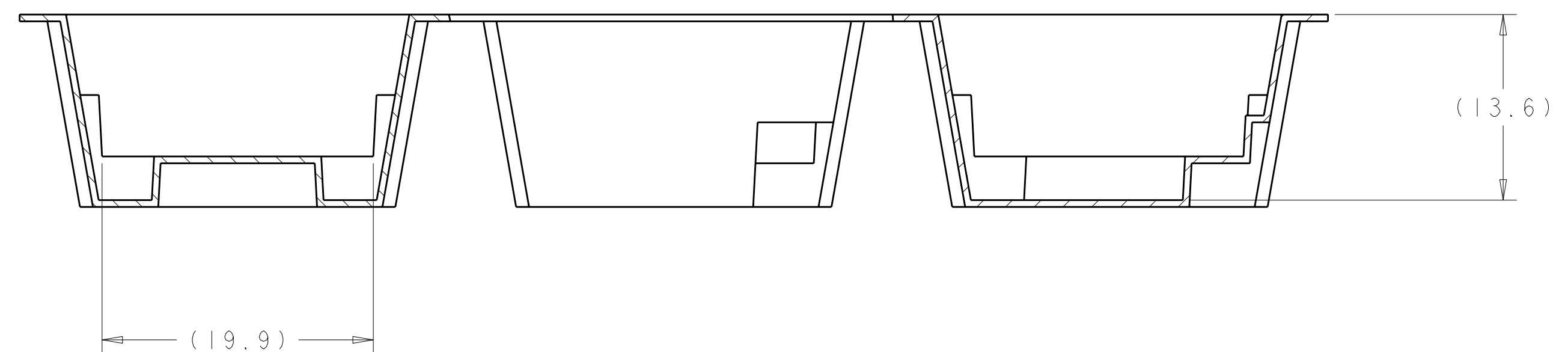
REEL PACKAGING  
 180 PCS PER REEL  
 SCALE APPROXIMATE  
 SCALE 3:5

|   |  |  |  |
|---|--|--|--|
| <small>THIS DRAWING IS UNPUBLISHED. RELEASED FOR PUBLICATION. THIS IS SUBJECT TO CHANGE WITHOUT NOTICE. TOLERANCES UNLESS OTHERWISE SPECIFIED: DIMENSIONS: mm</small> |  | DWN: Z.M.BEAM 22SEP2009<br>CHK: J.R.PETERSON 22SEP2009<br>APVD: P.H.WERTZ 22SEP2009                  | Tyco Electronics<br>Harrisburg, PA 17105-3608  |
| DIMENSIONS: mm<br>9 PLC ±0.1<br>1 PLC ±0.1<br>2 PLC ±0.1<br>3 PLC ±<br>4 PLC ±<br>ANGLES ±<br>FINISH  | TOLERANCES UNLESS OTHERWISE SPECIFIED:<br>9 PLC ±0.1<br>1 PLC ±0.1<br>2 PLC ±0.1<br>3 PLC ±<br>4 PLC ±<br>ANGLES ±<br>FINISH | NAME: OSFP<br>PRODUCT SPEC: 108-2286<br>APPLICATION SPEC: 114-13217<br>WEIGHT: -<br>CUSTOMER DRAWING | Tyco Electronics<br>Harrisburg, PA 17105-3608<br>OSFP<br>IXI CAGE ASSEMBLY<br>SOLDER, THRU BEZEL<br>SIZE: A   00779   C=2110487<br>SCALE: 5:1 SHEET: 4 OF 5 REV: 4 |

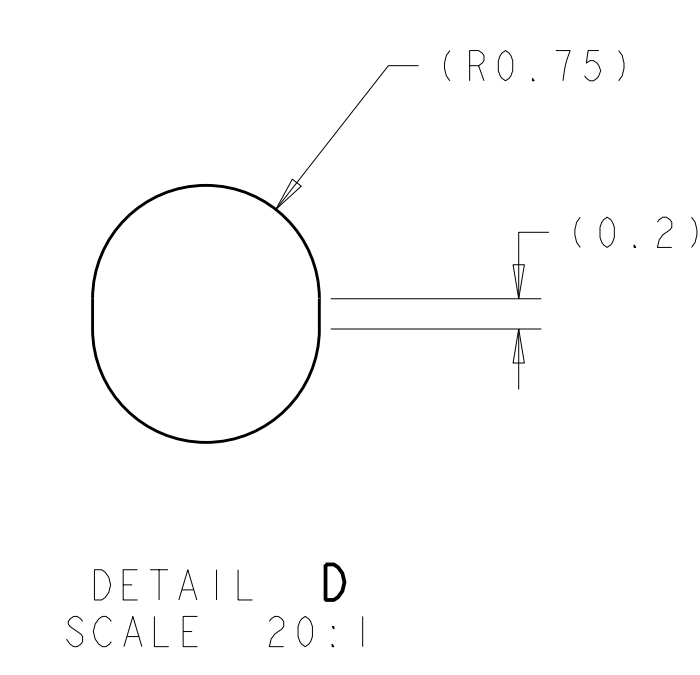
| LOC | DIST | REVISIONS   |      |     |      |
|-----|------|-------------|------|-----|------|
| GP  | 00   | REV         | DATE | DWN | APVD |
| -   | -    | SEE SHEET 1 | -    | -   | -    |



SECTION C-C



PACKAGING TAPE LAYOUT  
SCALE APPROXIMATE



DETAIL D  
SCALE 20:1

THIS PRINT IS  
**PRELIMINARY**  
 UNQUALIFIED PRODUCT  
 CONTACT PRODUCT ENGINEERING  
 BEFORE USING THIS PRINT

|   |  |  |   |
|---|--|--|---|
| <small>THIS DRAWING IS UNPUBLISHED. RELEASED FOR PUBLICATION BY TYCO ELECTRONICS CORPORATION. ALL RIGHTS RESERVED.</small>            |  | DWN: Z.M. BEAM 22SEP2009<br>CHK: J.R. PETERSON 22SEP2009<br>APVD: R.H. WERTZ 22SEP2009 | Tyco Electronics<br>Harrisburg, PA 17105-3608           |
| DIMENSIONS: mm<br>TOLERANCES UNLESS OTHERWISE SPECIFIED:<br>9 PLC ±0.1<br>1 PLC ±0.1<br>3 PLC ±0.1<br>4 PLC ±<br>ANGLES ±°<br>FINISH: | PRODUCT SPEC: 108-2286<br>APPLICATION SPEC: 114-13217<br>WEIGHT: | NAME: OSFP<br>IXL CAGE ASSEMBLY<br>SOLDER, THRU BEZEL                                  | SIZE: A100779<br>CAGE CODE: C=2110487<br>RESTRICTED TO: |
| MATERIAL:   |  | CUSTOMER DRAWING   | SCALE: 5:1 SHEET 5 OF 5 REV 4                           |