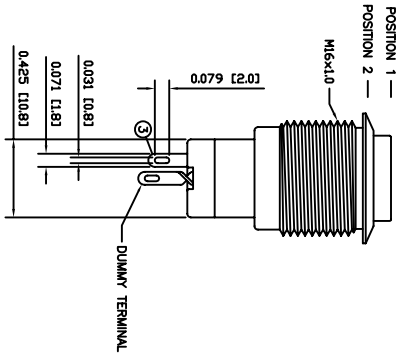
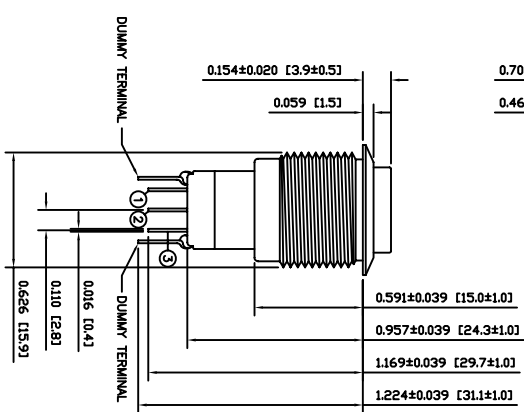
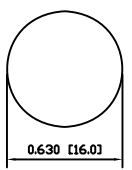


0.709 [18.0]  
0.465 [11.8]

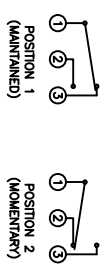


SUGGESTED PANEL CUTOUT



MAXIMUM PANEL THICKNESS: 0.315 [8.0mm]

SCHEMATIC



SPECIFICATIONS

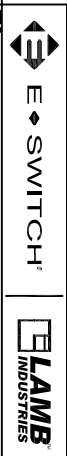
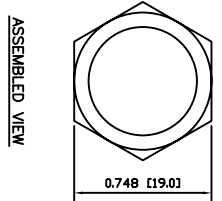
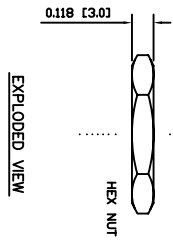
FUNCTION: 1P2T ON-(ON)  
RATING: 2A 48VAC  
CONTACT RESISTANCE: Initial: 50mΩ Max. at 1A 12VDC  
INSULATION RESISTANCE: 1,000MΩ Min. at 500VDC  
DIELECTRIC STRENGTH: 2,000VAC Min. for 1 Minute  
ELECTRICAL LIFE: 50,000 Cycles  
MECHANICAL LIFE: 200,000 Cycles  
TEMPERATURE: Operating: -20°C to 55°C  
INGRESS PROTECTION: IP65  
APPROVALS: **ROHS COMPLIANT**

MATERIALS

BUSHING: Aluminum  
BASE: Polycarbonate (PC)  
Polybutylene Terephthalate (PBT)  
ACTUATOR: Aluminum  
Polycarbonate (PC)  
HARDWARE: Nickel Plated Brass (159)  
SEALING: Silicone Rubber  
INNER ASSEMBLY: Polyether Ether Ketone (PEEK)  
Phosphor Bronze  
SPRING: Spring Steel  
CONTACTS: Silver/Cadmium Oxide (AgCdO)  
TERMINALS: Silver Plated Brass (162)  
O-RINGS: Silicone Rubber

COLORS AND FINISH

BEZEL: Black  
Anodized Finish  
ACTUATOR: Green  
Anodized Finish  
ILLUMINATION: None  
MARKING: None



PV3SWH2B018

REV.	DATE	BY	CHK
A	10/03/24	CAB	
A	06/13/12	CAB	
B	09/10/16	CAB	
B	09/09/28	CAB	

THE INFORMATION CONTAINED IN THIS DOCUMENT IS PROPRIETARY TO E-SWITCH AND IS NOT TO BE COPIED OR TRANSMITTED

REV.	DATE	DESCRIPTION
A	20208	NEW RELEASE

REV.	DATE	DESCRIPTION
A	06/13/12	SCALE

REV.	DATE	DESCRIPTION
A	06/13/12	SCALE

REV.	DATE	DESCRIPTION
A	06/13/12	SCALE

REV.	DATE	DESCRIPTION
A	06/13/12	SCALE

REV.	DATE	DESCRIPTION
A	06/13/12	SCALE

REV.	DATE	DESCRIPTION
A	06/13/12	SCALE