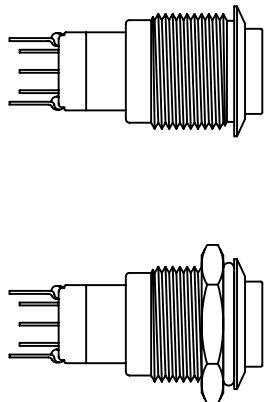


MAXIMUM PANEL THICKNESS: 0.315 [8.0mm]



SUGGESTED PANEL CUTOUT

SCHEMATIC

SPECIFICATIONS

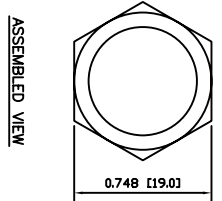
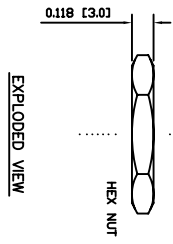
FUNCTION: 1P2T ON-(ON)
 RATING: 2A 48VAC
 CONTACT RESISTANCE: Initial: 50mΩ Max. at 1A 12VDC
 INSULATION RESISTANCE: 1,000MΩ Min. at 500VDC
 DIELECTRIC STRENGTH: 2,000VAC Min. for 1 Minute
 ELECTRICAL LIFE: 50,000 Cycles
 MECHANICAL LIFE: 200,000 Cycles
 TEMPERATURE: Operating: -20°C to 55°C
 INGRESS PROTECTION: IP65
 APPROVALS: **ROHS COMPLIANT**

MATERIALS

BUSHING: Aluminum
 BASE: Polycarbonate (PC)
 Polybutylene Terephthalate (PBT)
 ACTUATOR: Aluminum
 Polycarbonate (PC)
 HARDWARE: Nickel Plated Brass (H59)
 SEALING: Silicone Rubber
 INNER ASSEMBLY: Polyethylene Glycol (PEO)
 Phosphor Bronze
 SPRING: Spring Steel
 CONTACTS: Silver/Cadmium Oxide (AgCdO)
 TERMINALS: Silver Plated Brass (H62)
 O-RINGS: Silicone Rubber

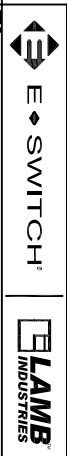
COLORS AND FINISH

BEZEL: Black
 Anodized Finish
 ACTUATOR: Black
 Anodized Finish
 ILLUMINATION: None
 MARKING: None



EXPLODED VIEW

ASSEMBLED VIEW



INCHES [MILLIMETERS]
 GENERAL TOLERANCES ±0.008 [±0.2] / ±1'

REV.	DATE	BY	CHK
A	10/03/24	CAB	
A	06/13/12	CAB	
B	09/10/16	CAB	
B	09/09/28	CAB	

THE INFORMATION CONTAINED IN THIS DOCUMENT IS PROPRIETARY TO E-SWITCH AND IS NOT TO BE COPIED OR TRANSMITTED

REV. A

NEW RELEASE DESCRIPTION

20208 DATE

06/13/12 DRAWN BY

SCALE

DRAWING NOT TO SCALE

PROJECTION

TRIP NUMBER

52-PV3SWH2B011

DATE

AUG 13, 2012

REVISION

A

PV3SWH2B011

LAM INDUSTRIES