

# 4 PORT 0°/180° HYBRID CONNECTORIZED: KSJ-K5

500 - 2200 MHz

## FEATURES:

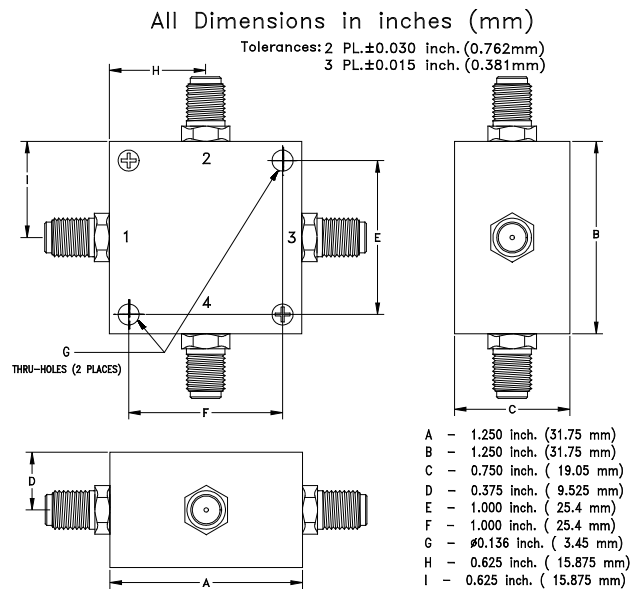
- ▶ Wide Bandwidth
- ▶ Closely Controlled Phase/Amplitude Unbalance
- ▶ RoHS Compliant



## SPECIFICATIONS

<b>Frequency</b>	500 - 2200 MHz		
<b>Insertion Loss *</b>	I/O	dB (Typ.)	dB (Max.)
	$\Sigma$ to C/D	0.9	1.7
	$\Delta$ to C/D	1.25	2.2
<b>Amplitude Unbalance</b>	Frequency (MHz)	dB (Max.)	
	500-2200	0.75	
	750-2170	0.5	
<b>Phase Unbalance</b>	Frequency (MHz)	Deg. (Max.)	
	500-2200	7°	
	750-2170	5°	
<b>Isolation (dB)</b>	I/O	Typ.	Min.
	$\Sigma$ to $\Delta$	35	18
	C to D	18	10
<b>Input Power Rating</b>	150 mWatt (Max.)		
<b>Impedance</b>	50 Ohms (Nom.)		
<b>VSWR</b>	1.5:1 (Max.)		
<b>Operating Temperature Range</b>	-40 to +85 °C		
<i>* Above 3 dB split loss.</i>			

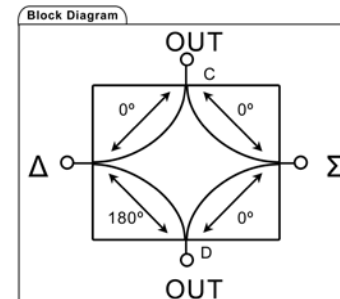
Package # 113LF



## PORT IDENTIFICATION

Sum ( $\Sigma$ )	Delta ( $\Delta$ )	0° Output (C)	0°/180° Output (D)
1	4	3	2

For 3 port operation, terminate either  $\Sigma$  or  $\Delta$  input into 50 Ohms.

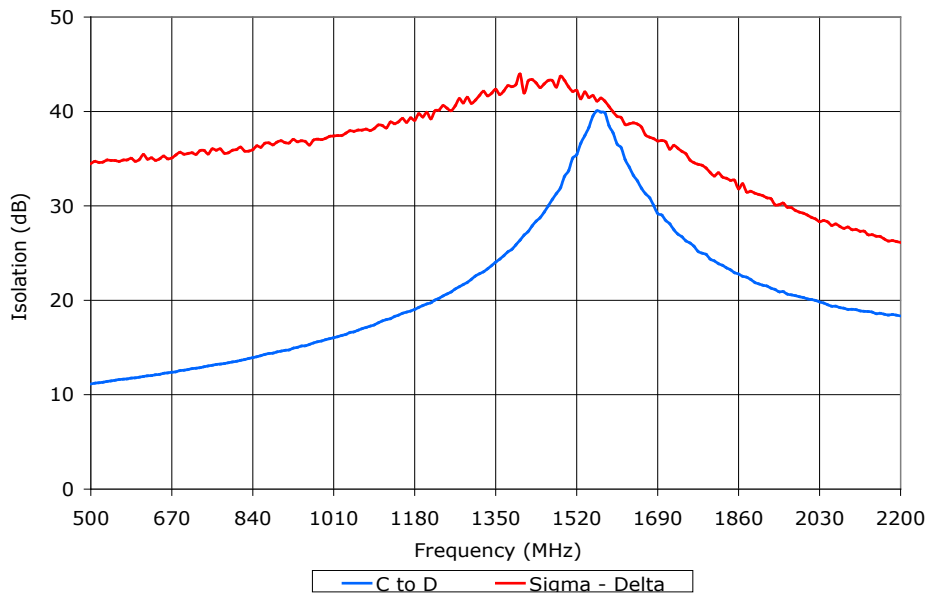
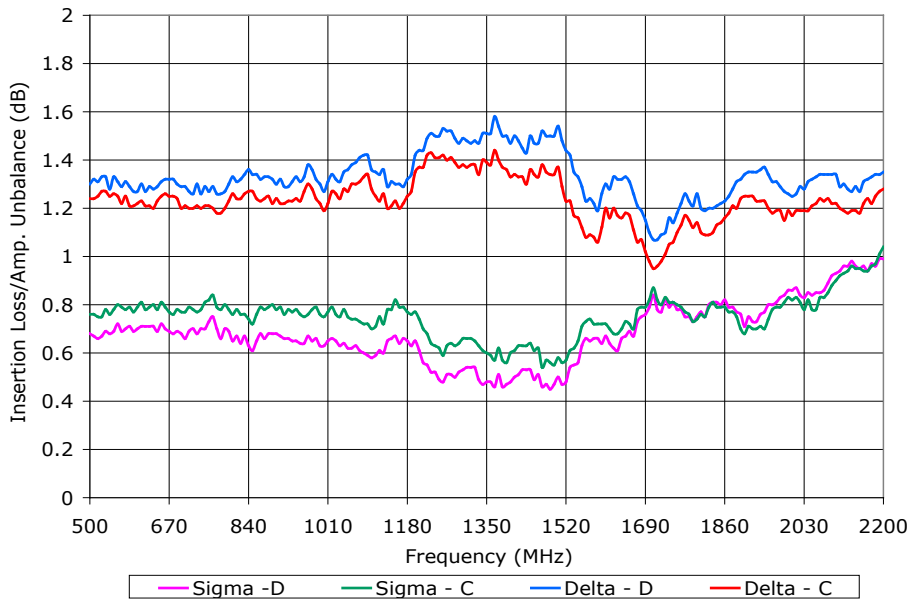


# 4 PORT 0/180° HYBRID CONNECTORIZED: KSJ-K5

500 - 2200 MHz

Data @ 25°C

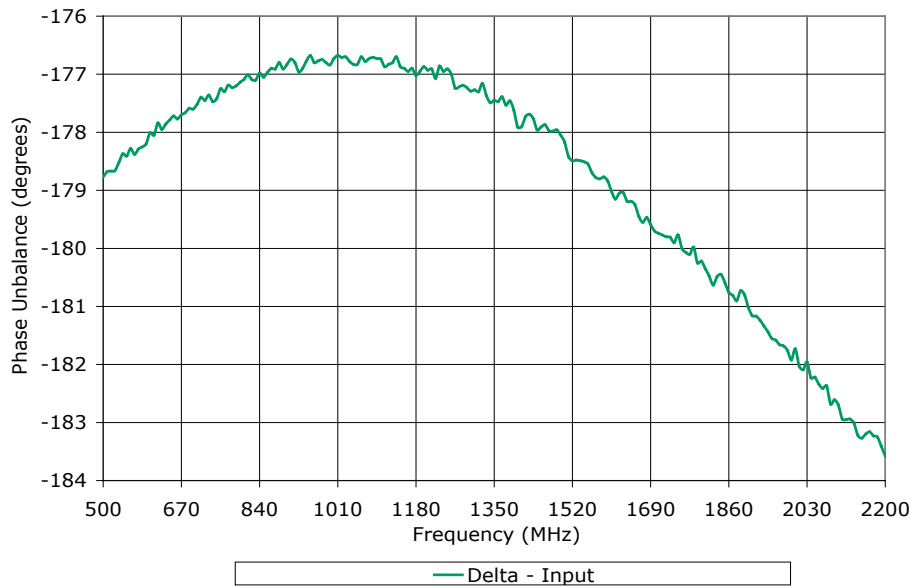
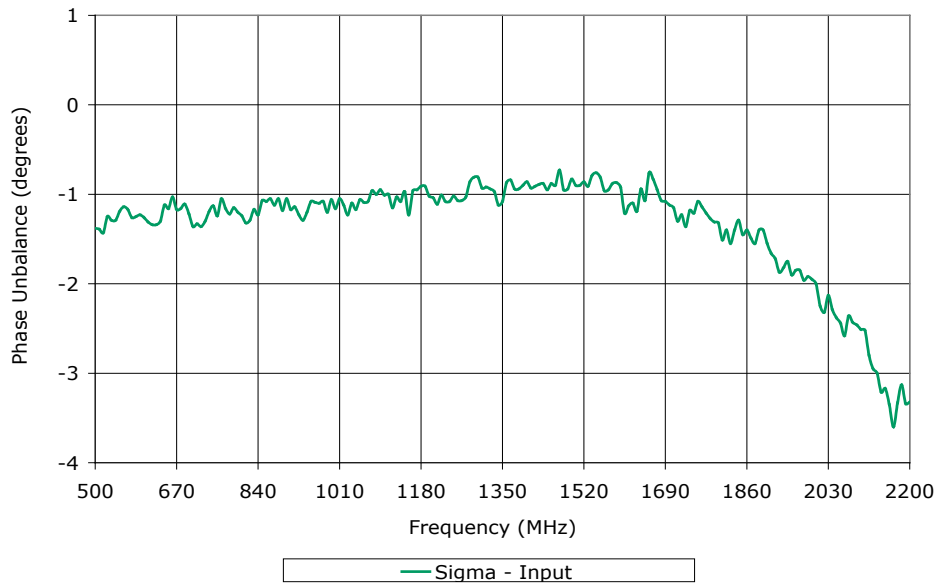
PERFORMANCE PLOTS



# 4 PORT 0/180° HYBRID CONNECTORIZED: KSJ-K5

500 - 2200 MHz

Data @ 25°C

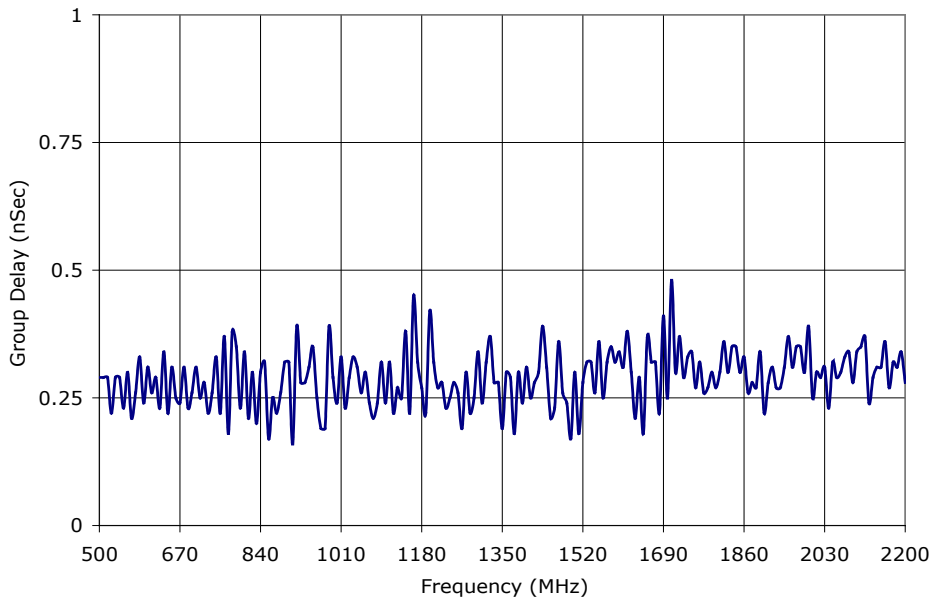
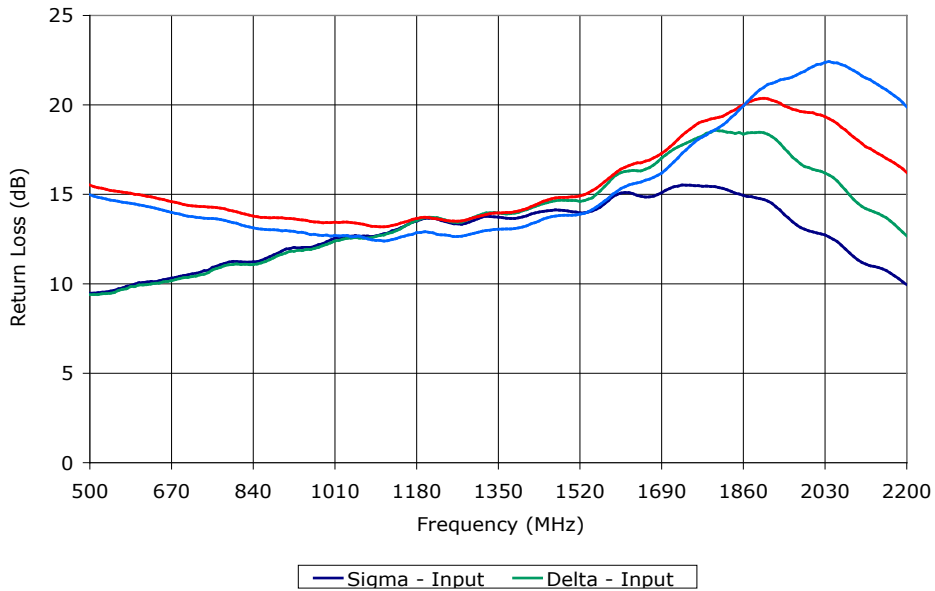


PERFORMANCE PLOTS

# 4 PORT 0/180° HYBRID CONNECTORIZED: KSJ-K5

500 - 2200 MHz

Data @ 25°C



PERFORMANCE PLOTS