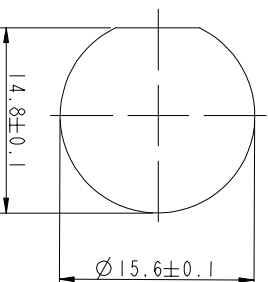
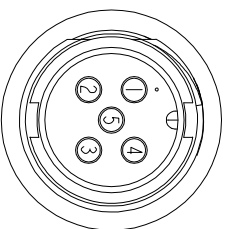
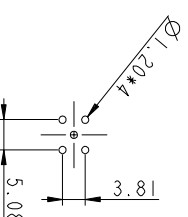
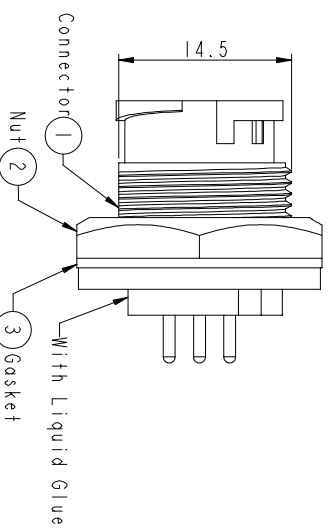


- Note:
- * \varnothing Important Dimension To Check.
 - * Waterproof Rate: IP67
 - * Housing: Black, Nylon+GF
 - * Pin: Copper Alloy, Gold Plated
 - * Nut: Black, Nylon+GF
 - * Gasket: Black, EPDM
 - * Use With Waterproof Cap Or Dust Cap
 - * Panel Thickness Max: 3.0mm
 - * Use Without Waterproof Cap Or Dust Cap
 - * Panel Thickness Max: 4.5mm



Pin Assignments
Front View

Recommended Panel Cut out



Spin Male Connector
Mate Pin PCB Layout

RoHS compliant

Scale	Free
TOLERANCE	
.X	±0.25
.XX	±0.10
.XXX	±0.05
Angle	±1°

Id.	Modification	Date	Name
①	Drawn	11.03.2014	Winnie

Date	Name
11.03.2014	Winnie
11.03.2014	Winnie

ASSMANN
WWSW/ components

Customer-No.	Drawing-No.	Replace
ASSMANN WSW-No. A-CR-05PMPMP-LC-WP	ASS 6241 CO	rev00

1	2	3	4	5	6	7
H	G	F	E	D	C	B
1	2	3	4	5	6	7
H	G	F	E	D	C	B