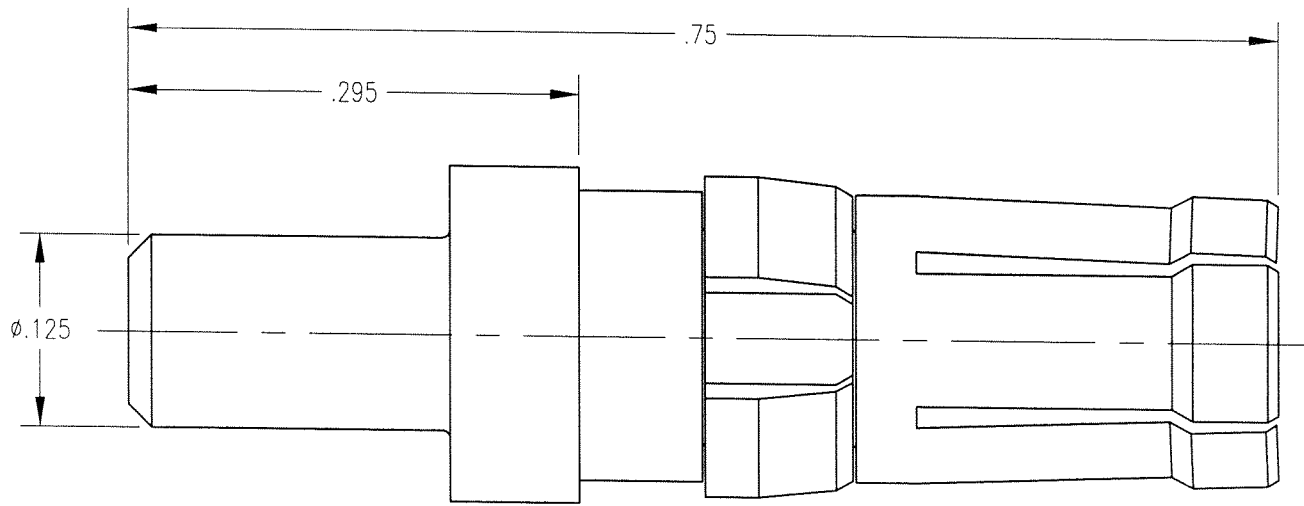


DWG NO. 221-010-00403G

REV	DESCRIPTION	BY	DATE	APPD
A	RELEASED PER NPR 2194	KJT	10/08/01	[Signature]



NOTES:

1. MATERIALS:
 BODY: COPPER ALLOY
 CLIP RING: BERYLLIUM COPPER PER ASTM B194
2. FINISH:
 BODY: .000030 MIN. GOLD PER MIL-G-45204 OVER
 .000050 MIN. NICKEL PER QQ-N-290
 CLIP RING: .000100 MIN. NICKEL PER QQ-N-290 OVER
 COPPER FLASH

PER ASME Y14.5M-1994 UNLESS OTHERWISE SPECIFIED: DIMENSIONS ARE IN INCHES (MM) TOLERANCES: DECIMALS xx ± .01/0.254 xxx ± .005/0.127 ANGLES ± 2° SCALE: 8:1				Litton Winchester/Retconn 400 Park Road Wallingford, Connecticut 06795	
CUSTOMER DRAWING				TITLE 40 AMP POWER RECEPTACLE	
DRAWN KJT	DATE 1/08/01	CHECKED [Signature]	DATE 1/08/01	A 221-010-00403G	
APPROVED [Signature]	DATE 1/08/01	APPROVED [Signature]	DATE 1/08/01	SH1 1 OF 1	REV. A