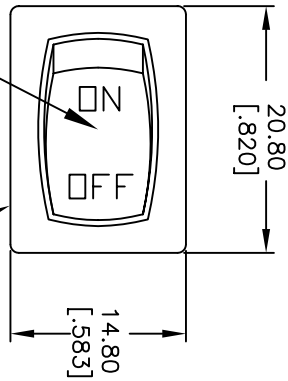
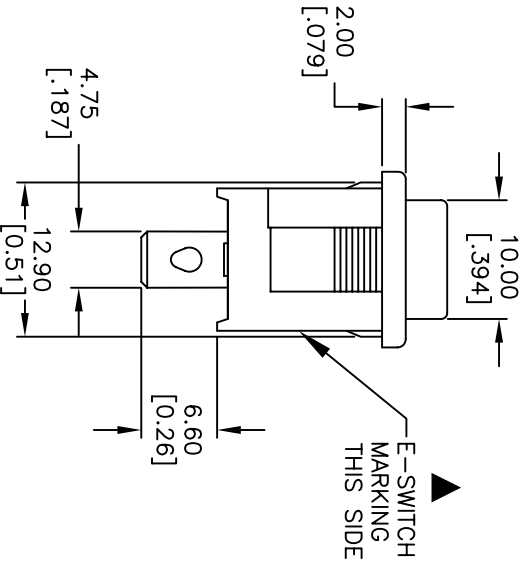
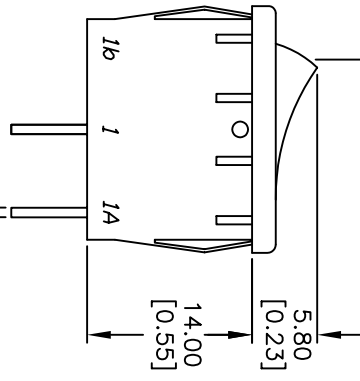


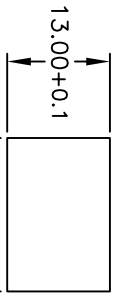
PANEL THICKNESS	X dimension
0.75-1.25 [0.030-.0491]	19.2-01 [7.561]
1.25-2.0 [0.049-.0791]	19.4-01 [7.641]
2.0-3.0 [0.079-.1181]	19.8-01 [7.801]



ACTUATOR: BLACK  
 POS. 1  
 BLACK BODY/HOUSING



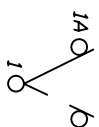
E-SWITCH MARKING THIS SIDE



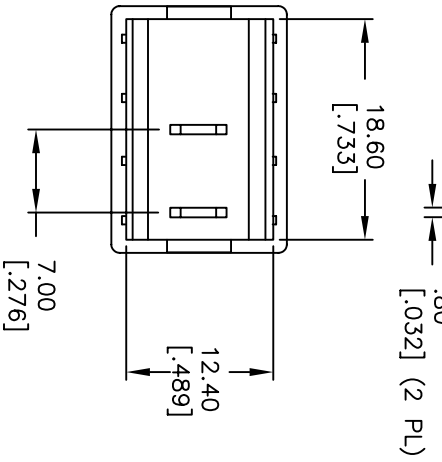
PANEL CUTOUT NOT TO SCALE

SWITCH FUNCTION	POS. 1	POS. 2
<DN>	DN	OFF
1-1a	OPEN	

( ) = MOMENTARY



CIRCUIT: SPST



- NOTES:
1. ALL DIMENSIONS IN MM [INCH]
  2. GENERAL TOLERANCE: X.X=±0.4 X.XX=±0.25
  3. TERMINAL NUMBERS FOR REF ONLY
  4. RATING: 15A @ 125VAC OR 8A @ 250VAC
  5. MATERIALS: TERMINALS: Silver Plated Copper Alloy CONTACTS: Coin Silver, Silver Plated
  6. ELECTRIC LIFE: 10,000 cycles
  7. CONTACT RESISTANCE: <20 Mega Ω
  8. INSULATION RESISTANCE: >1000 Mega Ω
  9. DIELECTRIC STRENGTH: >1500 V 1 minute >3000 V between poles
  10. 2002/95/EC (ROHS) COMPLIANT



REV.	ECN No.	DESCRIPTION	DATE	CHKD
A	17380	RELEASED FOR PRODUCTION	6/12/07	TN

TITLE	SCALE	DATE	DR	DWG	REV
R1966F BLK BLK I/F	1.5:1	6/12/07	TN	M304198	A

THE INFORMATION CONTAINED IN THIS DOCUMENT IS PROPRIETARY TO E-SWITCH AND IS NOT TO BE COPIED OR TRANSMITTED