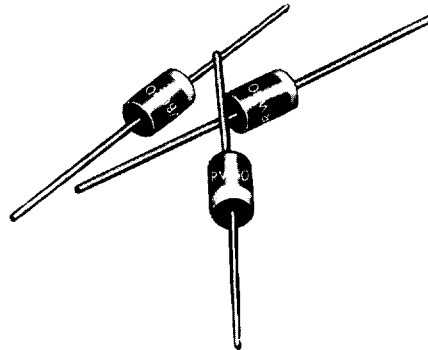


5 AMPERE FAST RECOVERY AXIAL LEAD RECTIFIERS

- PRV TO 1,000 VOLTS
- HIGH TEMPERATURE STABILITY
- HIGH SURGE CAPABILITY
- AVALANCHE CHARACTERISTICS



PRV	50V	100V	200V	400V	600V	800V	1000V
RWB* SERIES	RWB005	RWB010	RWB020	RWB040	RWB060	RWB080	RWB100

* Suffix "A" 150 nano sec. max. See Fig. #4
 Suffix "B" 250 nano sec. max. See Fig. #4

ELECTRICAL CHARACTERISTICS at T _A = 25°C Unless Otherwise Specified	RWB SERIES FAST RECOVERY
Max. DC Reverse Current @PRV and 25°C, I _R	5 μA
Max. DC Reverse Current @PRV and 100°C, I _R	250 μA
Max. Forward Voltage Drop @ 5.0 Amps, V _F	1.25 Volts
Ambient Operating Temperature Range, T _A	-55°C to +150°C
Storage Temperature Range, T _{STG}	-55°C to +150°C
Max. One-Half Cycle Surge Current, I _{FM} (Surge) @ 60 Hz	350 Amps

EDI reserves the right to change these specifications at any time without notice.

FIG. 1

OUTPUT CURRENT vs AMBIENT TEMPERATURE

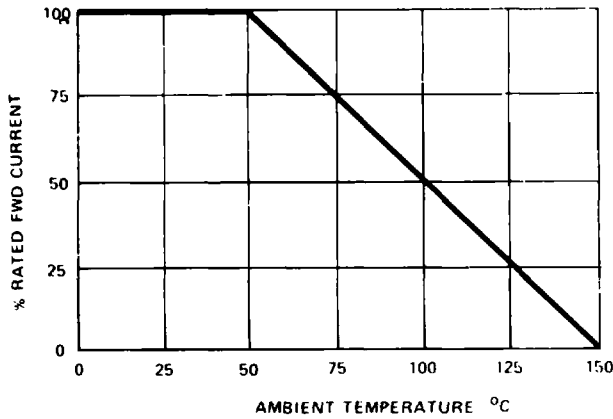


FIG. 2

NON-REPETITIVE SURGE CURRENT

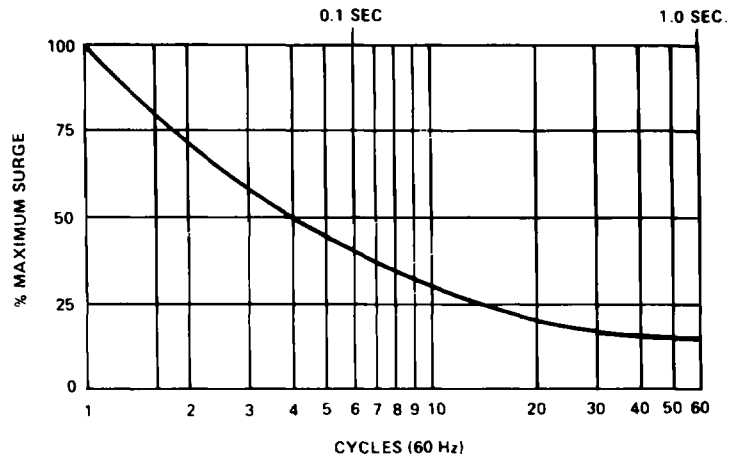


FIG. 3

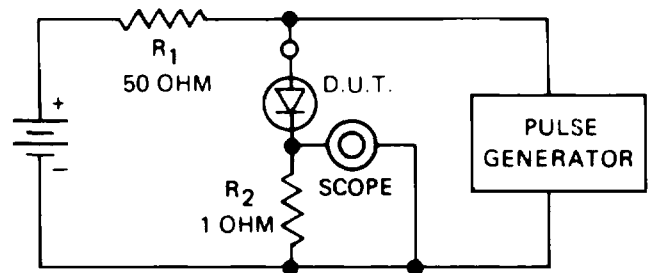
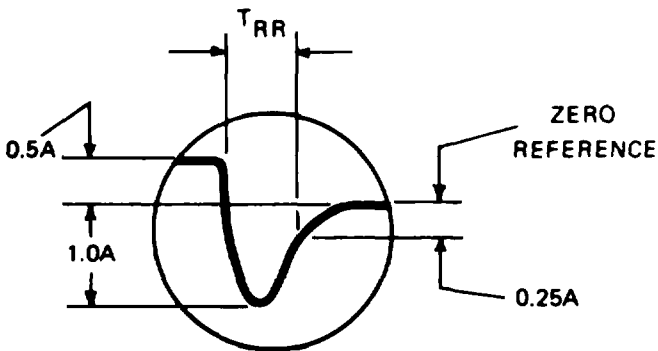


Maximum lead and terminal temperature for soldering, 3/8 inch from case, 5 seconds at 250°C.

TEST CIRCUIT

FIG. 4

TYPICAL REVERSE RECOVERY WAVEFORM



R_1, R_2 NON-INDUCTIVE RESISTORS
PULSE GENERATOR - HEWLETT PACKARD 214A OR EQUIV.
1KC REP. RATE, 10 μ SEC. PULSE WIDTH
ADJUST PULSE AMPLITUDE FOR PEAK I_R