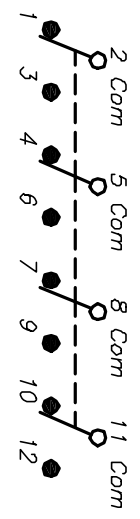


RECOMMENDED P.C.B. LAYOUT  
SCALE 1X

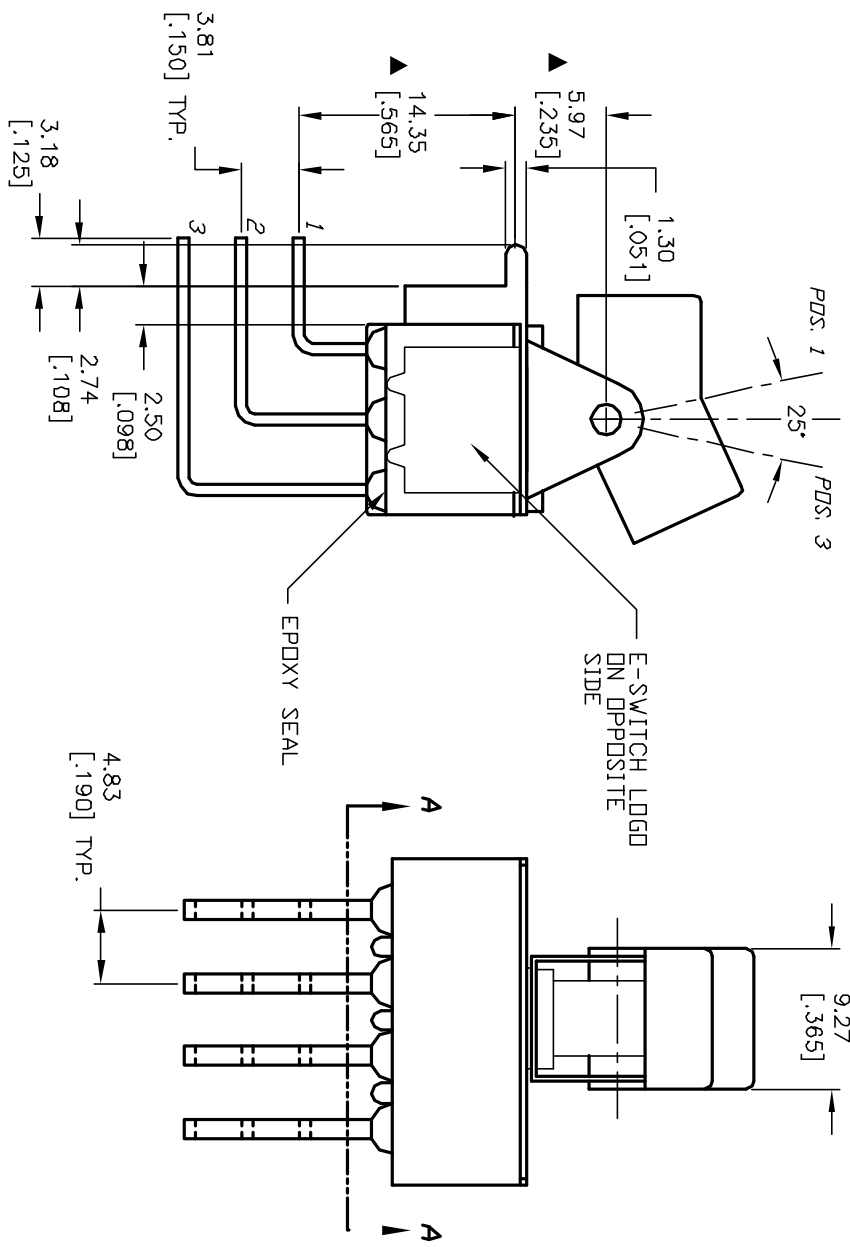
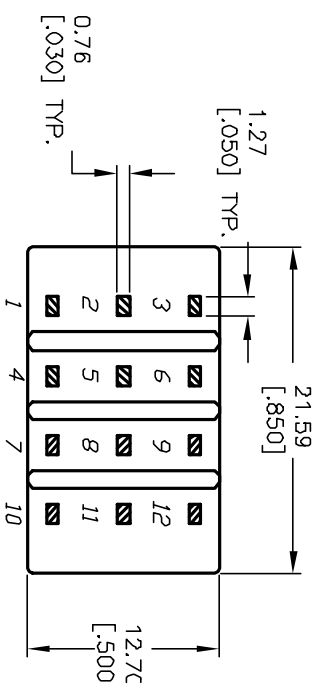
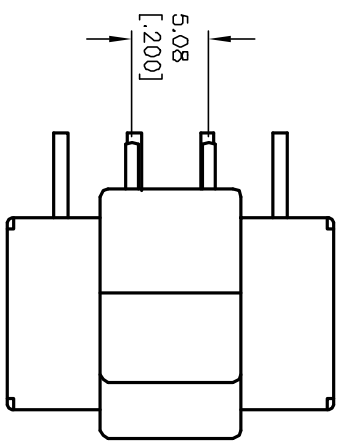


CIRCUIT: 4PDT

SWITCH FUNCTION		
PDS: 1	PDS: 2	PDS: 3
DN	OFF	DN
2-3, 5-6 8-9, 11-12	2-3, 5-4 8, 9 11-10	2-1, 5-4 8, 7 11-10

NOTES:

1. ALL DIMENSIONS IN MM [INCH]
2. GENERAL TOLERANCE: X.X=±0.4 X.XX=±0.25
3. TERM. NOS. FOR REF. ONLY
4. RATING: 5A @120VAC or 28VDC; 2A @250VAC.
5. CONTACT MATERIAL: Copper Alloy w/Silver Plating.
6. ELECTRICAL LIFE: 50,000 make-and-break cycles at full load.
7. INSULATION RESISTANCE: 1,000M ohm min.
8. DIELECTRIC STRENGTH: 1,000 V RMS @sea level.
9. OPERATING TEMP.: -30°C to 85°C
10. ▲ DENOTES CRITICAL PARAMETER.



REV.	ECN No.	DESCRIPTION	DATE	CHKD	SCALE	DATE	DR	DWG	REV
A	13096	RELEASED FOR PRODUCTION	4/30/03	AR	2:1	4/30/03	AR	T346006	A
TITLE					3004P3U1BLKM7QE				
THE INFORMATION CONTAINED IN THIS DOCUMENT IS PROPRIETARY TO E-SWITCH AND IS NOT TO BE COPIED OR TRANSFERRED					E-SWITCH®				