



PLK & PLR SERIES **Professional keylock or rotary switches**

NEW RANGE

- Miniature & subminiature
- 2 to 12 positions
- 1 to 4 poles



A P E M

PLK - PLR SERIES

PROFESSIONAL KEYLOCK OR ROTARY SWITCHES

Distinctive features

PLK SERIES - KEYLOCK SWITCHES

- Tapered lock face
- 2 or 3 positions
- Single or double pole
- Indexing : 90° (single pole) or 60° (double pole)
- Up to 200 different keys
- Double entry keys (can be inserted into the lock either way up)
- 5 disc lock type
- Miniature size, occupy small panel area
- Rear projection less than 30 mm from panel
- Easily assembled through front of panel
- Option : sealed terminals
- *Models with straight lock face available on request*



PLR SERIES - MINIATURE ROTARY SWITCHES

- 2 to 12 positions
- 1 to 4 poles
- Indexing : 30° on standard models, 60° or 90° optional
- Models with continuous rotation
- Adjustable stop to restrict number of position
- Shorting (make before break) or non shorting (break before make) contacts
- Solder lugs or PCB pins
- Options available :
 - no bush version
 - rear drive version
 - sealed terminations



PLRT SERIES - SUBMINIATURE ROTARY SWITCHES

- Standard TO-5 housing
- 2 to 8 positions
- Single or double pole
- 45° indexing
- Continuous rotation available on 8-position models
- Actuator : spindle
- Option : protective cover
- *Models with screwdriver slot available on request*



Dimensions : First dimensions are in mm while inches are shown as bracketted numbers.

Tolerance : The general tolerance for dimensions in this brochure is +/- 0,3 (.012).

Dimensions, specifications and data shown in this brochure are subject to change without notice.

PLK SERIES

PROFESSIONAL KEYLOCK SWITCHES

Tapered lock face

GENERAL SPECIFICATIONS

- Max. current/voltage rating (resistive) : 0,5A 30VDC
- Life : 10.000 cycles
- Initial contact resistance : 20 mΩ max.
- Insulation resistance : 100 MΩ min.
- Dielectric strength : 750 Vrms.
- Operating temperature : -20°C to +65°C
- Lock type : 5 disc
- Standard hardware supplied : 1 hex nut

MATERIALS

- Case : polyester, glass filled
- Bushing : zinc alloy, chrome plated
- Contacts : brass, silver plated

PANEL CUT-OUT



Movement	Number of positions	Number of poles	Key withdrawal position	Indexing	Number of keys	Key sets	MODEL NO	Switching diagram
90°	2	1	1-4	90°	2	same	PLKB3220	
90°	2	1	1-4	90°	2	200 different	PLKB3221	
90°	2	1	1	90°	2	same	PLKB3120	
60°	2	2	1-3	60°	2	same	PLKB4220	
60°	2	2	1	60°	2	same	PLKB4120	
180°	3	1	1-4-7	90°	2	200 different	PLKB8321	

Dimensions



PLR SERIES

PROFESSIONAL MINIATURE ROTARY SWITCHES

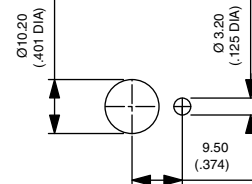
GENERAL SPECIFICATIONS

- Max. voltage (resistive) : 250V AC/DC
- Max. current : 150mA
- Initial contact resistance : 20 mΩ max.
- Insulation resistance: 1.000 MΩ min.
- Dielectric strength : 1.000 Vrms
- Life : 10.000 cycles
- Operating torque : 8,6 Ncm ±2
- End stop torque : 1,13 Ncm min.
- Fixing torque : 1,1 Ncm max.
- Operating temperature : -30°C to +85°C
- Standard hardware supplied : 1 hex nut and 1 locking ring
- Special accessories (buttons) : see page 7

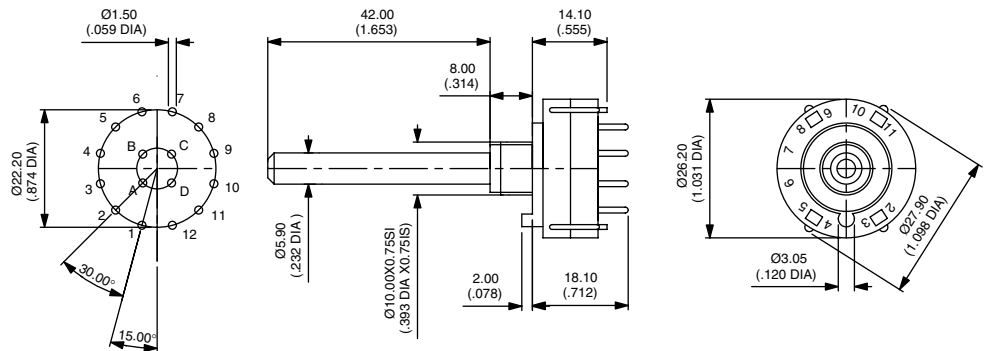
MATERIALS

- Moulded parts : PA 6/6, glass filled
- Contacts : brass, gold or silver plated, depending on version

PANEL CUT-OUT



Dimensions

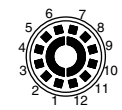


Available configurations (top view)

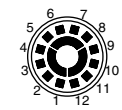
30° INDEXING (standard)
(models listed opposite)



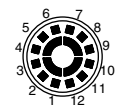
1 pole, 12 pos.



2 poles, 6 pos.

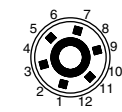


3 poles, 4 pos.

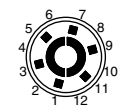


4 poles, 3 pos.

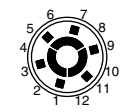
60° INDEXING
(on request)



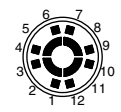
1 pole, 6 pos.



2 poles, 3 pos.

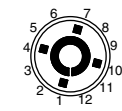


3 poles, 2 pos.

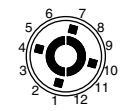


4 poles, 2 pos.

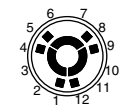
90° INDEXING
(on request)



1 pole, 4 pos.



2 poles, 2 pos.



3 poles, 2 pos.

PLR SERIES

PROFESSIONAL MINIATURE ROTARY SWITCHES

Models with 30° indexing

- Metric type
- Spindle diameter : 6 mm

- Spindle length : 42 mm
- Bushing : L 8 mm, M10 x 0,75

Preferred

DESCRIPTION	Contact material	Shorting	Non-shorting
1 pole, 12 positions			
Solder lugs	Silver plated	PLR3259	PLR3249
	Gold plated	PLR3728	PLR3723
PCB pins	Silver plated	PLR3279	PLR3269
	Gold plated	PLR3732	PLR3726
1 pole, 12 positions, continuous rotation			
Solder lugs	Silver plated	PLR3258	PLR3248
	Gold plated	PLR3753	PLR3757
PCB pins	Silver plated	PLR3278	PLR3268
	Gold plated	PLR3754	PLR3758
2 poles, 6 positions			
Solder lugs	Silver plated	PLR3260	PLR3250
	Gold plated	PLR3729	PLR3716
PCB pins	Silver plated	PLR3280	PLR3270
	Gold plated	PLR3733	PLR3693
2 poles, 6 positions, continuous rotation			
Solder lugs	Silver plated	PLR3334	PLR3338
	Gold plated	PLR3755	PLR3759
PCB pins	Silver plated	PLR3339	PLR3333
	Gold plated	PLR3756	PLR3760
3 poles, 4 positions			
Solder lugs	Silver plated	PLR3261	PLR3251
	Gold plated	PLR3730	PLR3734
PCB pins	Silver plated	PLR3281	PLR3271
	Gold plated	PLR3734	PLR3720
4 poles, 3 positions			
Solder lugs	Silver plated	PLR3262	PLR3252
	Gold plated	PLR3731	PLR3725
PCB pins	Silver plated	PLR3282	PLR3272
	Gold plated	PLR3735	PLR3727

PLRT SERIES

PROFESSIONAL SUBMINIATURE ROTARY SWITCHES

Spindle models

GENERAL SPECIFICATIONS

- Max. current/voltage rating (resistive) : 0,5A 24VAC - 0,2A 48VAC - 0,3A 30VDC
- Contact resistance :
 - initial : 50 mΩ max.
 - after 10.000 cycles : 100mΩ max
- Insulation resistance : 1.000 MΩ min at 500VDC
- Dielectric strength : 1.000 Vrms
- Life : 10.000 cycles
- Operating torque : 1,4 to 2,8 Ncm
- Operating temperature : -30°C to +65°C
- Accessory (protective cover) : see page 7.

MATERIALS

- Case : polyester, glass filled
- Contacts : brass, gold plated
- Terminals : copper alloy, gold plated

DIAGRAM



Model numbers and dimensions



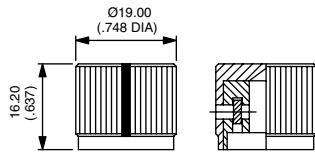
Movement	Number of positions	MODEL NO
360°	8 Continuous rot.	PLRT842
90°	3	PLRT331
135°	4	PLRT431
180°	5	PLRT531
315°	8	PLRT833



ACCESSORIES

For PLR and PLRT series

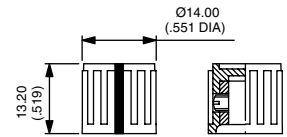
Straight knurl knob for PLR series



Natural anodized aluminium
U6107

Black anodized aluminium
U6106

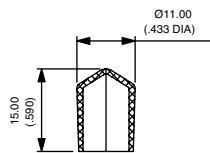
Ribbed knob for PLR series



Black plastic
U6108



Protective cover for PLRT series



U6105

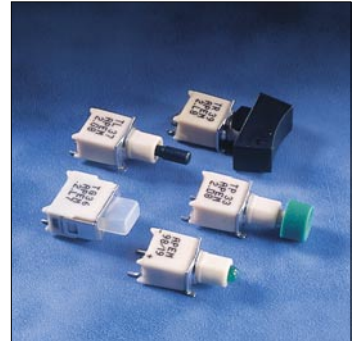
The APEM subminiature range



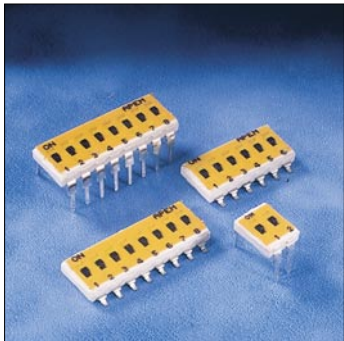
Z series



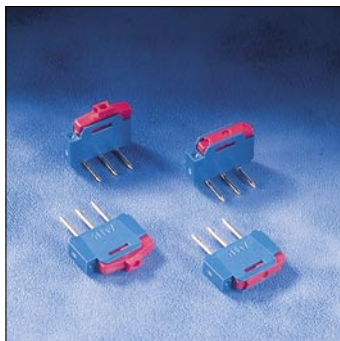
T series



SMT T series



IK series



NK series



PHAP series



CR65 series

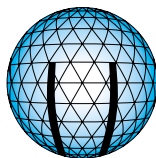


9000 series

Corporate sales

APEM

Centre d'Affaires Paris Nord - BP 200
Tour "Le Continental"
93153 Le Blanc Mesnil Cedex - France
Tel.: (+33) 1 48 14 92 65 - Fax: (+33) 1 48 14 92 84
e-mail : apem.com@wanadoo.fr



A P E M

Customer Service and Registered Office

APEM

55, avenue Edouard Herriot - BP 1
82303 Caussade Cedex - France
Tel.: (+33) 5 63 93 14 98 - Fax: (+33) 5 63 93 19 03
e-mail : commercial@apem.fr
web : www.apem.fr