



Low Cost...High Performance Connectors

When you have to design it right the first time,
specify the Deutsch MMP connector series.

Designers, looking for an interconnection system that will give them maximum performance for minimum cost, are turning to the Deutsch MMP Composite Connector Series for all the right reasons.

It is small, rugged, low cost, and moisture resistant when mated. The MMP offers unique high-density crimp contact insert configurations making it ideal for commercial and industrial use.

The rugged MMP, made from an advanced composite

material called ULTEM™, has high-temperature resistance in addition to superior strength and load bearing capability.

The MMP is compact and designed for use where space is a concern. The Series 100 features a 0.600" outside diameter and the Series 200 has a 0.750" outside diameter.

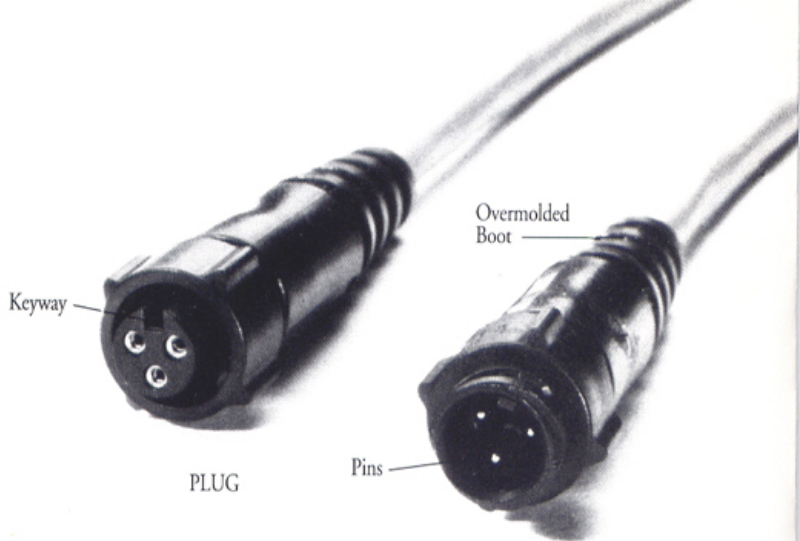
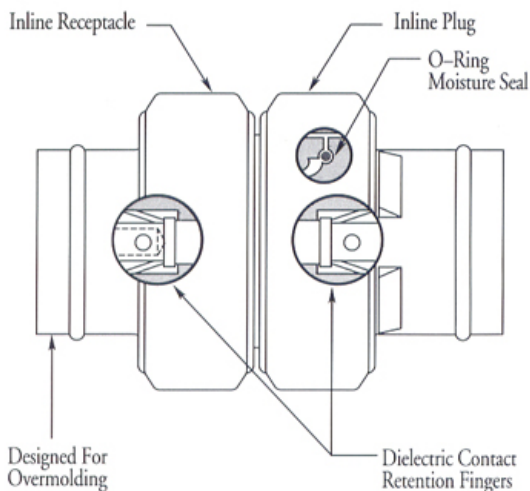
Having more than 40 years of experience in the connector industry, Deutsch and the MMP Composite Connector Series are now serving the demands of the commercial and industrial marketplace worldwide.



DEUTSCH

Advanced Interconnect

5733 West Whittier Avenue • Hemet, CA 92545-9077 • Telephone 951-765-2200 • Fax 951-922-1544



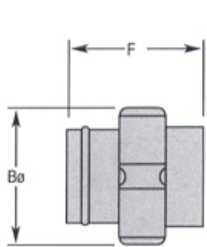
Features

- Positive locking dielectric contact retention.
- Flexible cavity design permits installation of either pins or sockets.
- Engineered, high strength composite housing for rugged applications.
- Connector can be exposed to gamma irradiation, autoclaving, ethylene oxide and cold sterilants without

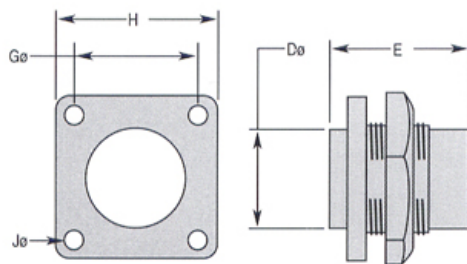
performance degradation.

- Depending on contact size and wire gage, the MMP features a current rating up to 13 amps.
- Voltage rating is 750 to 1000 V (rms).
- Insulation resistance is 1000 megohms.
- Dielectric withstanding voltage is 1500 ac (rms) at sea level.

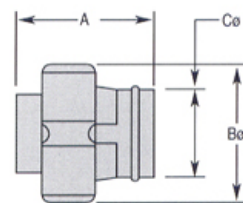
- MMP connectors meet or exceed all requirements for the UL94 class V-0 flammability rating.
- Recommended operating temperature for the connector range from -55°C to +175°C.
- The MMP can be shipped from stock to meet urgent delivery requirements.



Inline Receptacle



Universal Flange Receptacle



Inline Plug

Plugs And Receptacles

A universal flange receptacle permits mounting in either a square flange or jam nut configuration. This gives designers the flexibility of selecting either mounting style for a wider variety of applications.

Series	A	Bø	Cø	Dø	E	F	G	H	Jø
100	.750	.600	.340	.360	.750	.750	.500	.700	.120
200	.750	.750	.500	.520	.750	.750	.718	.938	.125

Insert Arrangements

Series 100



2002 Arr.
2 #20 Contacts

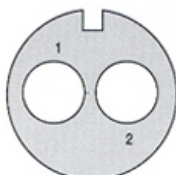


2003 Arr.
3 #20 Contacts

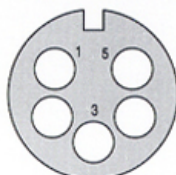


2204 Arr.
4 #22 Contacts

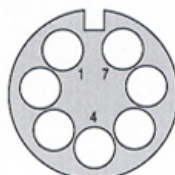
Series 200



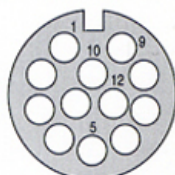
1602 Arr.
2 #16 Contacts



2005 Arr.
5 #20 Contacts



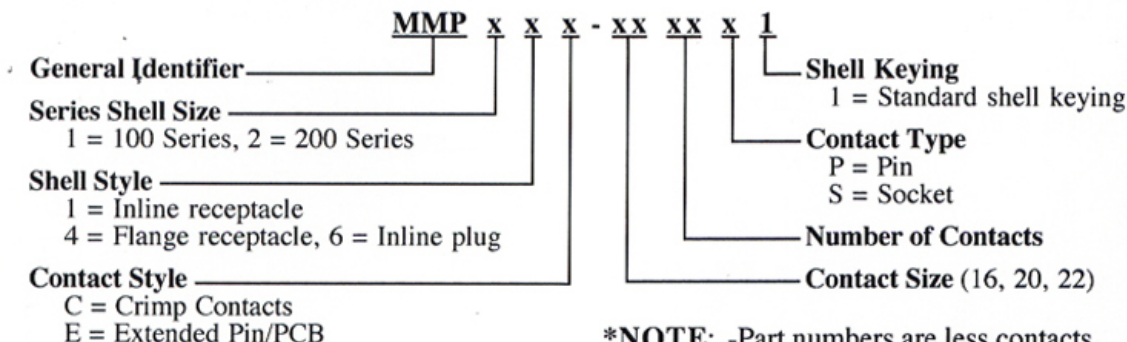
2007 Arr.
7 #20 Contacts



2212 Arr.
12 #22 Contacts

**Satandard GPS
Interface Connector**

Ordering Information Connectors



***NOTE:** -Part numbers are less contacts
-Unit packaging/kitting available through Distribution

Contacts

The MMP features military-type contacts for high reliability at commercial contact costs, thanks to Deutsch's high-volume contact manufacturing techniques. Their gold-plated copper alloy material assures excellent conductivity, high reliability and long life. Contacts are available in crimp or extended pins for PC-boards.

The socket contacts in the MMP have been designed with a stainless steel sleeve. Their heavy duty construction with a closed entry design provides for proper alignment to prevent damaged sockets and protect against test equipment probe damage.

The MMP's flex-cavity feature permits designers to customize pin and socket contact configurations by installing any

combination in either plugs or receptacles. Manufacturers heretofore supplied only all-pin or all-socket connectors.

- Contacts can be crimped for reliability and inspectability.
- Insertable and removable for easy assembly and maintenance.
- Gold-plated copper alloy for extended life and superior conductivity.

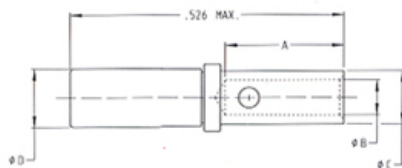
- Closed entry sockets for proper alignment and resistance to probe damage.
- 0.090" electrical engagement for circuit integrity.
- Contacts are designed for high-speed crimping equipment and assembled using commercially available tooling.

Contact Information

Contact Size	Current Rating	Voltage Rating
22	5 Amps	750 V-rms
20	7.5 Amps	1000 V-rms
16	13 Amps	1000 V-rms
Insulation Resistance 1000 megaohms		

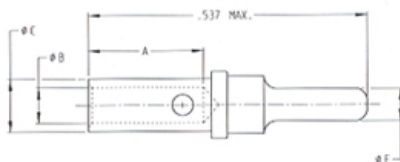
Contact Part Numbers, Dimensions and Tools

Socket Contacts



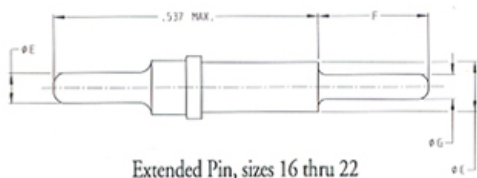
Socket Contact Part Numbers	Size	A Min.	BØ Min.	CØ Max.	DØ Max.	Wire Gage Range	Recommended Strip Length	Insertion/ Removal Tool
6862-201-22278	22	.141	.0035	.048	.059	22,24,26	.160 to .190	6757-201-2201
6862-201-20278	20	.209	.046	.070	.078	20,22,24	.230 to .260	6757-201-2001
6862-201-16278	16	.209	.066	.103	.113	16,18,20	.230 to .260	6757-201-1601

Pin Contacts



Pin Contact Part Numbers	Size	A Min.	BØ Min.	CØ Max.	EØ Max.	Wire Gage Range	Recommended Strip Length	Insertion/ Removal Tool
6860-201-22278	22	.145	.0335	.048	.0300 ±.0005	22,24,26	.160 to .190	6757-201-2201
6860-201-20278	20	.209	.046	.070	.0400 ±.0010	20,22,24	.230 to .260	6757-201-2001
6860-201-16278	16	.209	.066	.103	.0625 ±.0010	16,18,20	.230 to .260	6757-201-1601

Extended Pin / PCB Contacts



Contact Part Numbers	Size	F ±.015	CØ Max.	GØ ±.002	EØ
6860-202-22278	22	.221	.048	.030	.0300 ±.0005
6860-202-20278	20	.221	.070	.040	.0400 ±.0010
6860-202-16278	16	.221	.103	.050	.0625 ±.0010

Tooling

Contact Insertion and Extraction Tools

	Insert	Extract	Part Number	Color
Size 16			6757-201-1601	(Blue/White)
Size 20			6757-201-2001	(Red/Orange)
Size 22			6757-201-2201	(Green/White)

Crimp Tool Information

Available From Daniels Tool

Contact Size	Crimp Tool	
	Frame	Positioner
22	MH860	86-5
20	AF8	TH-163
16	AF8	TH-163

Note: Contact is designed to extend .125 ± .025 beyond rear of receptacle shell.
Finish: Contact body-gold over nickel plated material; Contact body-copper alloy



DEUTSCH

5733 West Whittier Avenue • Hemet, CA 92545-9077 • Telephone 951-765-2200 • Fax 951-922-1544

Made in the U.S.A.
© 1998 Deutsch
MMPBR-7272B
VPHEMCA