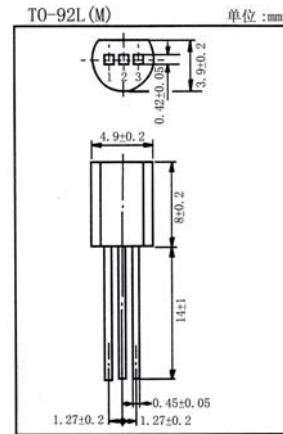


用途:用于功率放大, 电源开关/Purpose: Power amplifier and switching applications.

特点:饱和压降低, 开关时间短, 与 2SC2655 (3DG2655) 互补/Features: Low collector saturation voltage high speed switching time, complementary pair with 2SC2655 (3DG2655).

极限参数/Absolute maximum ratings(Ta=25°C)

参数符号 Symbol	数值 Rating	单位 Unit
V _{CB0}	-50	V
V _{CE0}	-50	V
V _{EB0}	-5.0	V
I _C	-2.0	A
P _C	900	mW
T _j	150	°C
T _{stg}	-55~150	°C

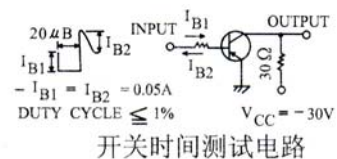


引脚: 1.E 2.C 3.B

电性能参数/Electrical characteristics(Ta=25°C)

参数符号 Symbol	测试条件 Test condition	数值 Rating			单位 Unit
		最小值 Min	典型值 Typ	最大值 Max	
V _{CE0}	I _C =-10mA I _B =0	-50			V
I _{CB0}	V _{CB} =-50V I _E =0			-1.0	μ A
I _{EB0}	V _{EB} =-5.0V I _C =0			-1.0	μ A
h _{FE(1)}	V _{CE} =-2.0V I _C =-0.5A	70		240	
h _{FE(2)}	V _{CE} =-2.0V I _C =-1.5A	40			
V _{CE(sat)}	I _C =-1.0A I _B =-0.05A			-0.5	V
V _{BE(sat)}	I _C =-1.0A I _B =-0.05A			-1.2	V
f _T	V _{CE} =-2.0V I _C =-0.5A	50	100		MHz
C _{ob}	V _{CB} =-10V I _E =0 f=1.0MHz			40	pF
t _f	(如图示)		0.1		μ s
t _{on}	(如图示)		0.1		μ s
t _{stg}	(如图示)		1.0		μ s

h_{FE(1)}分档/h_{FE(1)} classifications: 0:70~140 Y:120~240



开关时间测试电路

