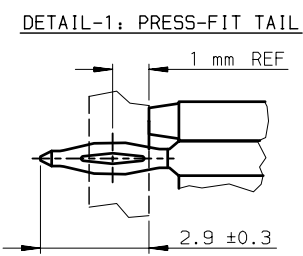
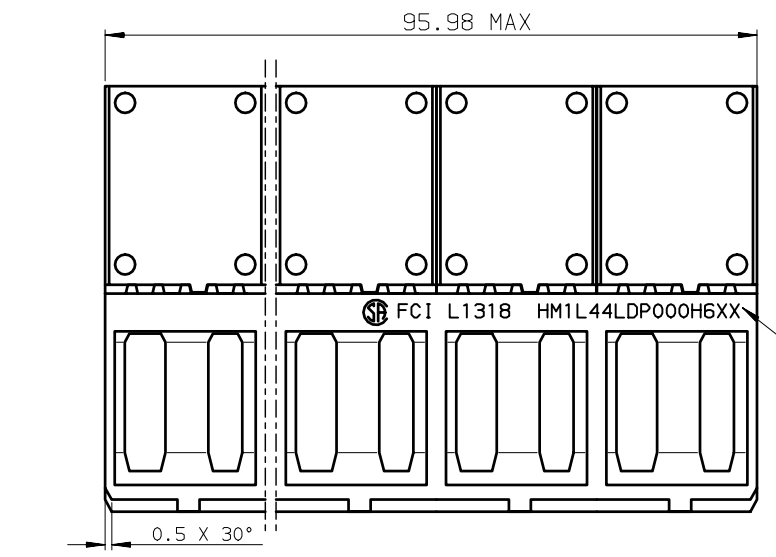
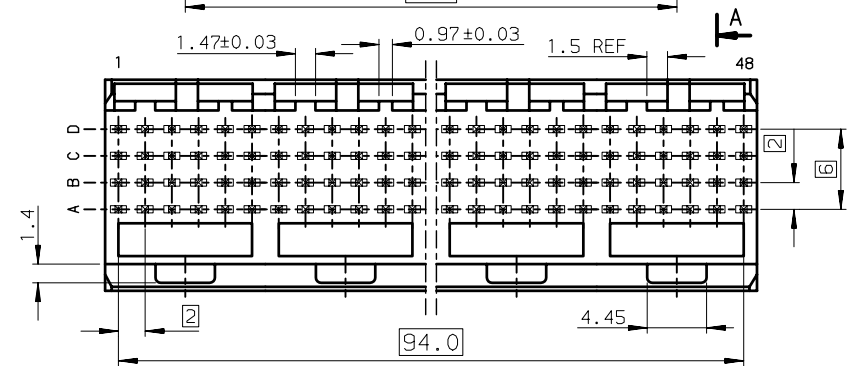
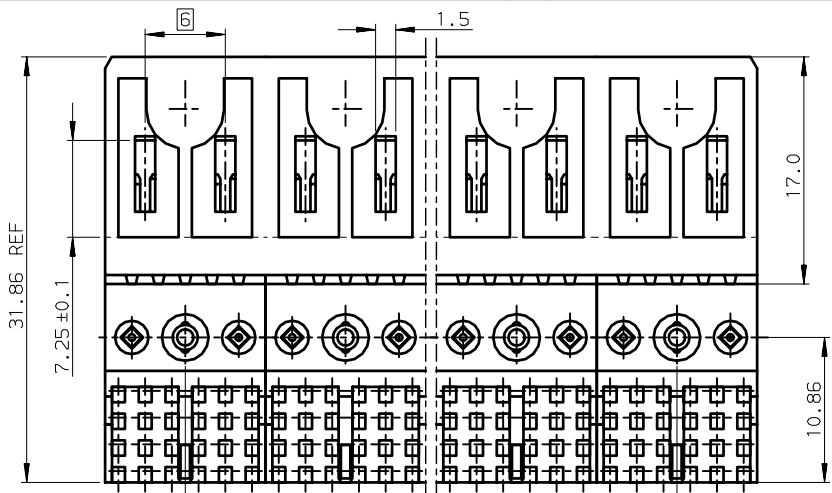


Tous droits strictement réservés. Reproduction ou communication a des tiers interdite sous quelque forme que ce soit sans autorisation écrite du propriétaire. Propriété de c FCI. Droits de reproduction FCI.

**FCI**

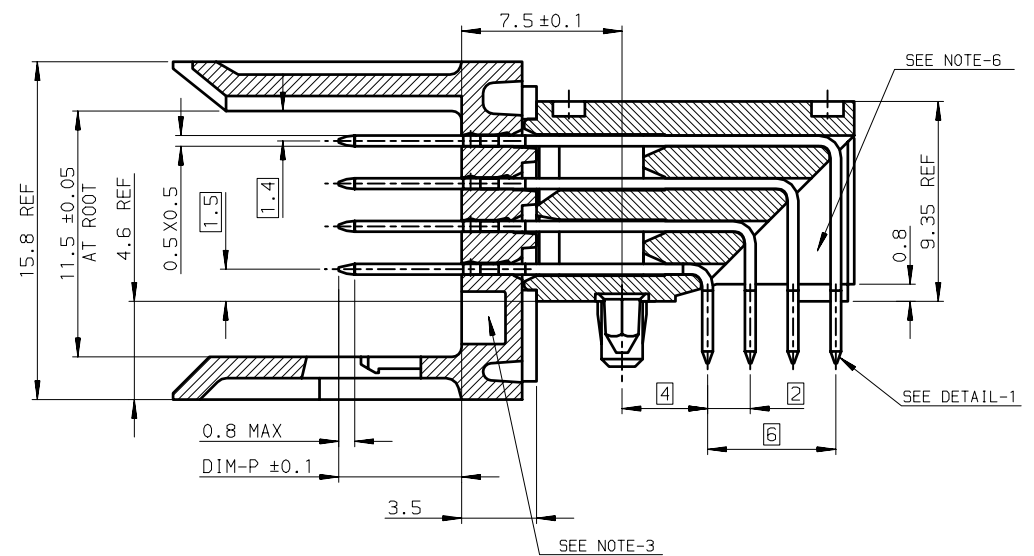
ALL rights strictly reserved. Reproduction or issue to third parties in any form whatever is not permitted without written authority from the proprietor. Property of FCI. Copyright FCI.



NOTE-2: ONE CENTER PEG FOR HOLD DOWN FORCE  
 NOTE-3: CODING RECESS FOR 8MM EXTENDED KEYS  
 NOTE-4: PRODUCT MARKING = FCI + BATCH CODE + PRODUCT NUMBER  
 FOR 8 MODULE SIZE, ADD CSA LOGO MARKING  
 NOTE-5: PLATING ON MATING PART : GOLD OVER NICKEL (SEE PERFORM LEVEL)  
 PLATING ON PRESS-FIT TAILS: TIN LEAD OVER NICKEL  
 NOTE-6: CENTRAL WALL WITH END REAR SUPPORT  
 NOTE-7: PACKAGING IN TRAY + COVER  
 QTY/TRAY = 15 ; QTY PER CATOON BOX = 15 X 6 = 90 PCS

8 MODULE SIZE

SECTION-A SCALE: 4/1



**GENERAL CHARACTERISTICS AND ROHS INFORMATIONS:  
 SEE DRAWING C-8626-000P**

OTHERS INFORMATIONS, SEE DRW C-8626-0153-2

European view

<b>FCI</b>	www.fciconnect.com		ISO 1302	tolerance ISO 406 ISO 1101	projection 	mm 			
	Dr	CHAMPION	25/01/95	Product family	METRAL	size	A3	Scale	2.5
Eng	TARON	25/01/95	Spec ref	-	ECN	LS05-0070			
Chr	LEGARE	25/01/95	Material	SEE NOTES					
Appr	LEGARE	25/01/95							
title							dwg no	Rev.	
METRAL RA HEADER WB CONVE									C-8626-0153-1
4x48 CTS - PF - PUSH PEG									
catalog no							- CUSTOMER COPY	sheet 1 of 2	

Ltr	ecn no	dr	date
E	-	CHA	09/07/03
F	LS05-0070	MRA	24/08/05
-	-	-	-
-	-	-	-
-	-	-	-
-	-	-	-

Tous droits strictement réservés. Reproduction ou communication a des tiers interdite sous quelque forme que ce soit sans autorisation écrite du propriétaire. Property of FCI. Droits de reproduction FCI.

FCI

ALL rights strictly reserved. Reproduction or issue to third parties in any form whatever is not permitted without written authority from the proprietor. Property of FCI. Copyright FCI.

TIN LEAD PART NUMBER

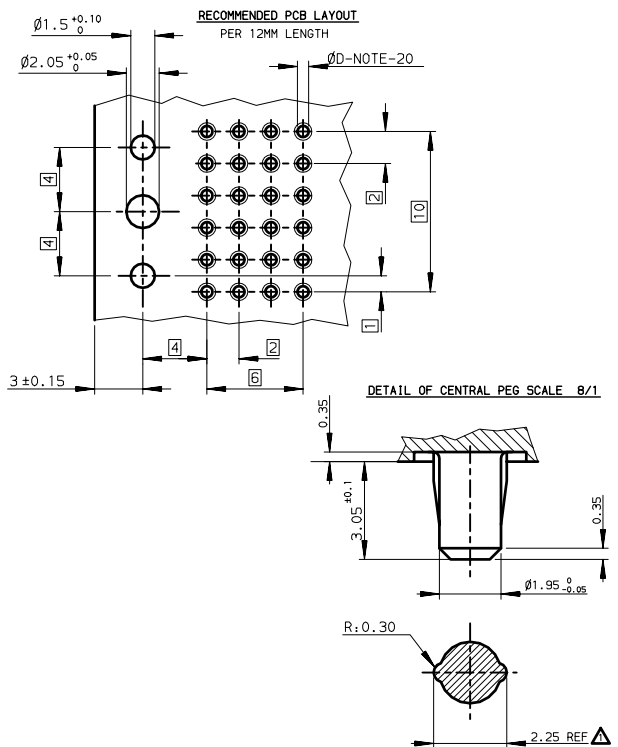
PART NUMBER / CONTACT LOADING					P/N AND PERFORMANCE LEVEL		SP N°
DIM-P ±0.10							
ROW-A	ROW-B	ROW-C	ROW-D	IEC CLASS-1	TELCORDIA-CO		
5.00	5.00	5.00	5.00	HM1L44ADP000H6P	HM1L44ADP040H0P		
5.75	5.75	5.75	5.75	HM1L44LDP000H6P	HM1L44LDP040H0P		
6.50	6.50	6.50	6.50	HM1L44DDP000H6P	HM1L44DDP040H0P		
6.50	5.00	5.00	5.00	HM1L44BDP000H6P	HM1L44BDP040H0P		
6.50	5.75	5.75	6.50	HM1L44CDP000H6P	HM1L44CDP040H0P		
5.00	5.00	6.50	5.00	HM1L44ZDP110H6P	(NEW SP NUMBER)	110	
5.00	5.75	6.50	5.00	HM1L44ZDP430H6P	(NEW SP NUMBER)	430	
5.00	5.75	5.00	5.00	HM1L44ZDP448H6P	(NEW SP NUMBER)	448	
5.75	5.00	5.00	5.00	HM1L44ZDP009H6P	(NEW SP NUMBER)	009	
5.75	6.50	5.75	5.00	HM1L44ZDP424H6P	(NEW SP NUMBER)	424	
6.50	5.75	6.50	5.75	HM1L44ZDP037H6P	(NEW SP NUMBER)	037	
6.50	5.75	5.00	5.75	HM1L44ZDP102H6P	(NEW SP NUMBER)	102	
6.50	6.50	6.50	5.75	HM1L44ZDP135H6P	(NEW SP NUMBER)	135	
6.50	5.75	5.75	5.75	HM1L44ZDP369H6P	(NEW SP NUMBER)	369	

STANDARD MATING LENGTHS = 5.75 (AND 5.00-6.50)

LEAD-FREE PART NUMBER

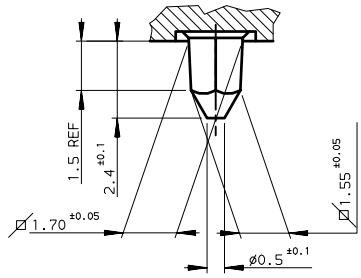
PART NUMBER / CONTACT LOADING					P/N AND PERFORMANCE LEVEL		SP N°
DIM-P ±0.10							
ROW-A	ROW-B	ROW-C	ROW-D	IEC CLASS-1	TELCORDIA-CO		
5.00	5.00	5.00	5.00	HM1L44ADP000H6PLF	HM1L44ADP040H0PLF		
5.75	5.75	5.75	5.75	HM1L44LDP000H6PLF	HM1L44LDP040H0PLF		
6.50	6.50	6.50	6.50	HM1L44DDP000H6PLF	HM1L44DDP040H0PLF		
6.50	5.00	5.00	5.00	HM1L44BDP000H6PLF	HM1L44BDP040H0PLF		
6.50	5.75	5.75	6.50	HM1L44CDP000H6PLF	HM1L44CDP040H0PLF		
5.00	5.00	6.50	5.00	HM1L44ZDP110H6PLF	(NEW SP NUMBER)	110	
5.00	5.75	6.50	5.00	HM1L44ZDP430H6PLF	(NEW SP NUMBER)	430	
5.00	5.75	5.00	5.00	HM1L44ZDP448H6PLF	(NEW SP NUMBER)	448	
5.75	5.00	5.00	5.00	HM1L44ZDP009H6PLF	(NEW SP NUMBER)	009	
5.75	6.50	5.75	5.00	HM1L44ZDP424H6PLF	(NEW SP NUMBER)	424	
6.50	5.75	6.50	5.75	HM1L44ZDP037H6PLF	(NEW SP NUMBER)	037	
6.50	5.75	5.00	5.75	HM1L44ZDP102H6PLF	(NEW SP NUMBER)	102	
6.50	6.50	6.50	5.75	HM1L44ZDP135H6PLF	(NEW SP NUMBER)	135	
6.50	5.75	5.75	5.75	HM1L44ZDP369H6PLF	(NEW SP NUMBER)	369	

STANDARD MATING LENGTHS = 5.75 (AND 5.00-6.50)



- NOTE-20: PTH DIMENSIONS - ØD
- DRILL DIAMETER = 0.85 REF
  - DRILLED HOLE = Ø0.86 - Ø0.81
  - COPPER PLATING THICKNESS ;SEE DRW C-8626-000P
  - TIN LEAD PLATING THICKNESS;SEE DRW C-8626-000P
  - FINISH HOLE = Ø0.65 - Ø0.80

DETAIL OF LOCATING PEGS (2x) SCALE 8/1



GENERAL CHARACTERISTICS AND ROHS INFORMATIONS:  
SEE DRAWING C-8626-000P

OTHERS INFORMATIONS,SEE DRW C-8626-0153-1

European view

	www.fciconnect.com		ISO 1302	tolerance ISO 406 ISO 1101	projection 	mm 			
	Dr	CHAMPION	25/01/95	Product family	METRAL	size	A3	Scale	3
Eng	TARON	25/01/95	Spec ref	-	-	ECN	LS05-0070		
Chr	LEGARE	25/01/95	Material	SEE NOTES					
Appr	LEGARE	25/01/95							
title						dwg no	Rev.		
METRAL RA HEADER WB CONVERGED								C-8626-0153-2	F
4x48 CTS - PF - PUSH PEG									
catalog no						- CUSTOMER COPY		sheet 2 of 2	