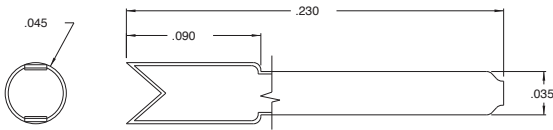


## Lamp Sockets and Accessories

Low Cost Pin Socket for Bi-Pin Lamps (Recommended for .100" or wider lead spacing)

Part Number: CM21-16

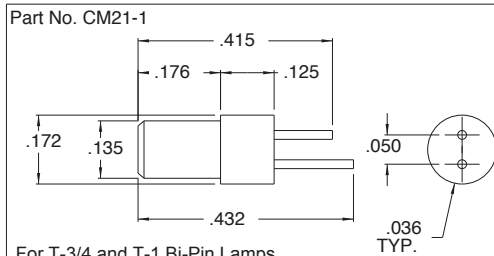
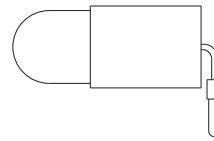


Mounting Hole: .038"

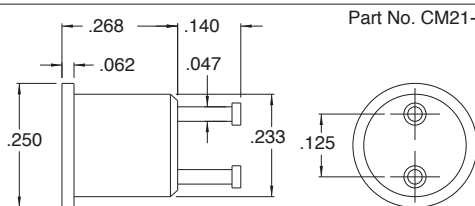
CM21-16 Pin Socket may be pre-assembled to your bi-pin lamp by specifying the following options.  
 (Example: CM7387-299)

Option - 298

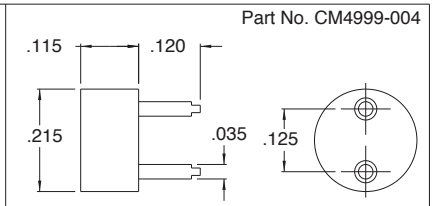
Option - 299



For T-3/4 and T-1 Bi-Pin Lamps  
 Recommended mounting hole .130" nominal,  
 maximum panel thickness .125".

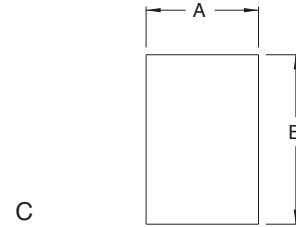
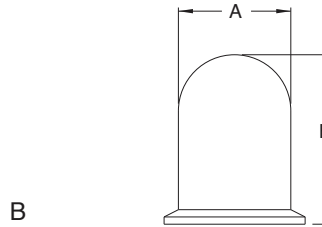
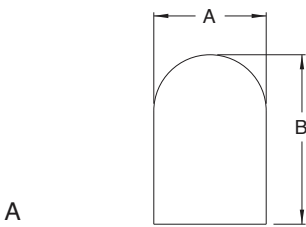


For T-1 3/4 Bi-Pin Lamps  
 Recommended mounting hole .221" nominal,  
 maximum panel thickness .250".



For T-1 3/4 Bi-Pin Lamps

### CM39 Series Colored Silicone Filter Boots



Part Number: CM39 - XX - X

Type Designation	Lamp Size	Configuration	Dimensions		Color Designation	Color
			A	B		
02	T-3/4	A	.090	.230	1	Red
03	T-1	A	.096	.312	2	Blue/White
04	T-1	A	.096	.219	3	Clear
05	T-1 1/4	A	.175	.265	4	Amber
06	T-1 3/4	A	.214	.375	5	Green
07	T-1 3/4	B	.218	.312	6	Blue
08	T-1 3/4	B	.218	.279	7	Yellow
09	T-2	C	.250	.522		
10	T-2	C	.250	.272		
11	T-3 1/4	A	.370	.672		