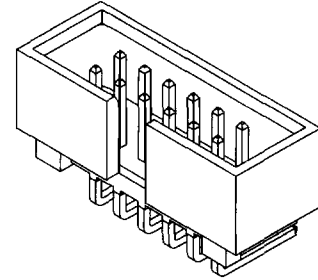


molex® 2.54mm (.100") Pitch
C-Grid®
Shrouded Header

70247
Dual Row, Low Profile
Right Angle



C-Grid

FEATURES AND SPECIFICATIONS

Features and Benefits

- Sizes 8 to 64 circuits
- Polarized slot
- Low profile
- High temperature material version available, contact factory
- For alternate product, see 90709

Reference Information

UL File No.: E29179 (H)
 CSA File No.: LR19980A
 Mates With: .050" pitch ribbon cable connectors
 Designed In: Inches

Electrical

Voltage: 250V
 Current: 3.0A
 Contact Resistance: 15mΩ max.
 Dielectric Withstanding Voltage: 600V
 Insulation Resistance: 1000 MΩ min.

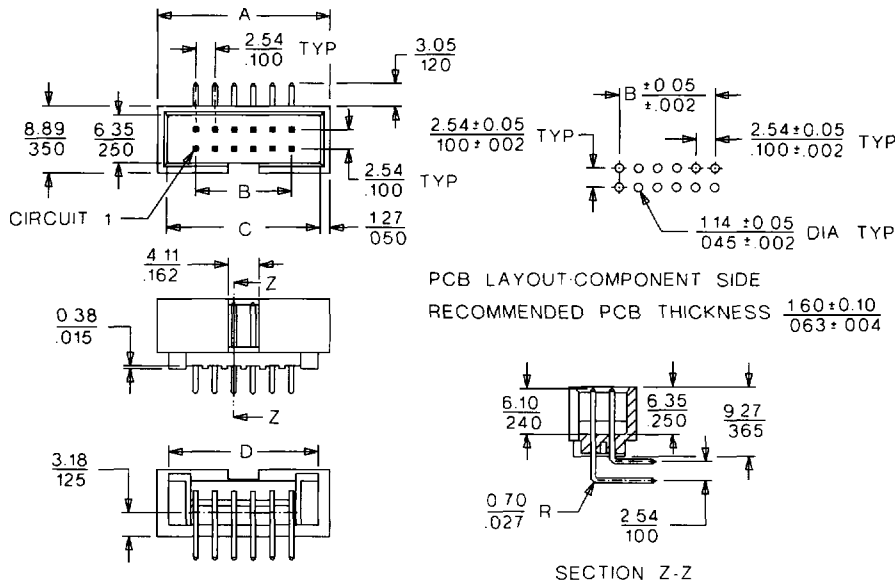
Mechanical

Contact Retention to Housing: 1.8kg (4 lb)
 Durability: 50 cycles Gold

Physical

Housing: Glass-filled polyester, UL 94V-0
 Contact: Brass
 Plating: See Table
 Temperature: -40 to +105°C

Not For Use With C-Grid III® Components



ORDERING INFORMATION AND DIMENSIONS

Circuits	Order No.			Dimension			
	15μ" Gold	20μ" Gold	30μ" Gold	A	B	C	D
8	70247-0801	70247-0800	70247-0802	7.62 (.300)	14.73 (.580)	17.78 (.700)	15.25 (.600)
10	70247-1001	70247-1000	70247-1002	10.16 (.400)	17.27 (.680)	20.32 (.800)	17.78 (.700)
14	70247-1401	70247-1400	70247-1402	15.24 (.600)	22.35 (.880)	25.40 (1.000)	22.86 (.900)
16	70247-1601	70247-1600	70247-1602	17.78 (.700)	24.89 (.980)	27.94 (1.100)	25.40 (1.000)
20	70247-2001	70247-2000	70247-2002	22.86 (.900)	29.97 (1.180)	33.02 (1.300)	30.28 (1.200)
26	70247-2601	70247-2600	70247-2602	30.48 (1.200)	37.59 (1.480)	40.64 (1.600)	38.10 (1.500)
34	70247-3401	70247-3400	70247-3402	40.64 (1.600)	47.75 (1.880)	50.80 (2.000)	48.26 (1.900)
40	70247-4001	70247-4000	70247-4002	48.26 (1.900)	55.37 (2.180)	58.42 (2.300)	55.88 (2.200)
44	70247-4401	70247-4400	70247-4402	53.34 (2.100)	60.45 (2.380)	63.50 (2.500)	60.96 (2.400)
50	70247-5001	70247-5000	70247-5002	60.96 (2.400)	68.07 (2.680)	71.12 (2.800)	68.58 (2.700)
56	70247-5601	70247-5600	70247-5602	68.58 (2.700)	75.69 (2.980)	78.74 (3.100)	76.20 (3.000)
60	70247-6001	70247-6000	70247-6002	73.66 (2.900)	80.77 (3.180)	83.82 (3.300)	81.28 (3.200)
64	70247-6401	70247-6400	70247-6402	78.74 (3.100)	85.85 (3.380)	88.90 (3.500)	86.36 (3.400)