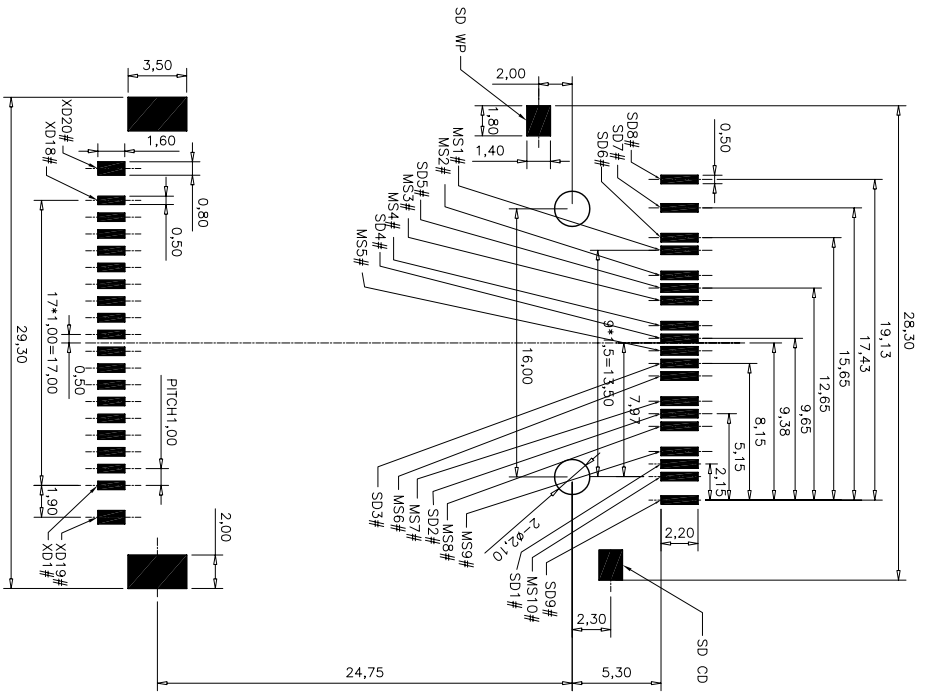
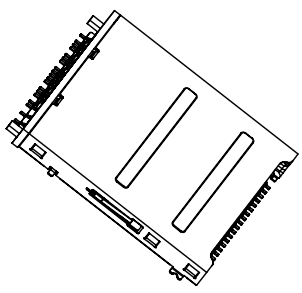
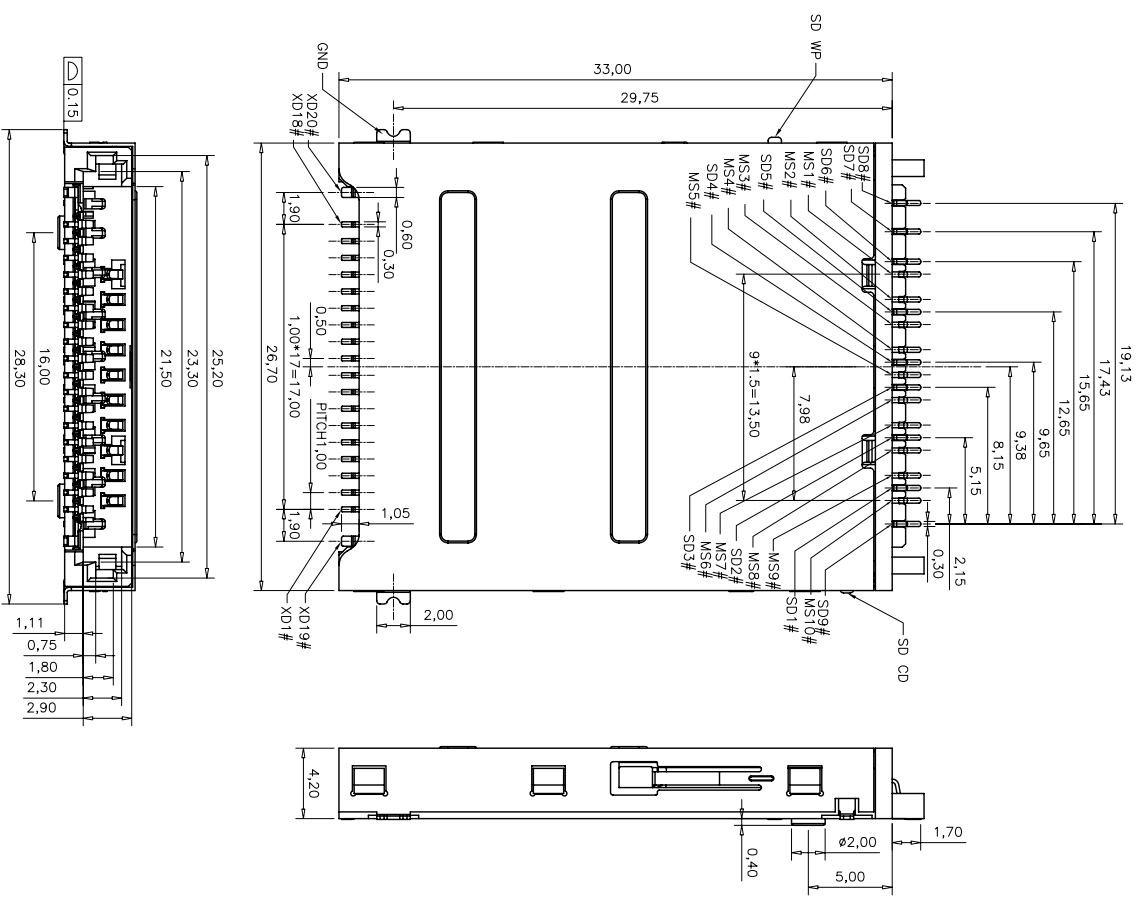


This document is the property of Amphenol Connector and is returned to the express condition that it is not to be duplicated, reproduced or used, in whole or in part, for manufacture or sale by anyone other than Amphenol without the express written consent of Amphenol. No right is granted to others or to use any information in this document.

CUSTOMER DRAWING

REVISIONS				
REV	DESCRIPTION	DATE	APPROVED	
A	HK****	RELEASE TO CUSTOMER	04/12/07	IP



RECOMMENDED PCB LAYOUT(TOP VIEW)
(ALL TOLERANCES ARE ±0.05)

ORDER P/N
4IN1-PB-001-X

1. 0.76um gold Plating
2. 0.38um gold Plating
3. Gold Flash

UNLESS OTHERWISE SPECIFIED		APPROVAL		DATE	
TOLERANCES	U.S. METRIC	DRAWN	APPROVED	DATE	
X	0.20	Jahnson, Xod	04/12/07		
XX	0.15	CHECKED	DB, Gao	04/12/07	
XXX		CHECKED			
FRACTIONS +/-					
ANGLES +/-					
FOR MATERIALS AND FINISHES SEE NOTES		DRAWING FILE :		TITLE	
REMOVE SHARP EDGES		DRAWING: SD, CHN, PROTOT, ALMS		4IN1 CONNECTOR	
DIMENSIONS		ANGLE OF PROJECTION		(SD+MVC+MS+XD)	
U.S. INCHES		30°		SIZE	A3
METRIC MM				DRAWING NO.	C 4IN1-PB-001-X
		SCALE	NONE	SHEET	1 OF 2
		REV.			A

This document is the property of Amphenol Corporation and is intended for use only in connection with the products and services described herein. It is not to be reproduced, stored in a retrieval system, or transmitted in any form or by any means, electronic, mechanical, photocopying, recording, or by any information storage and retrieval system, without the prior written permission of Amphenol Corporation. The whole or in part, for manufacture or sale by anyone other than Amphenol Corporation, is prohibited. All rights reserved. Amphenol Corporation or to use any information in this document.

REVISIONS			
SYM	ECN	DESCRIPTION	DATE

SEE SHEET 1

SD CARD

PIN#	NAME	DESCRIPTION
1	CD/DAT3	CARD DETECT/DATA LINE BIT3
2	CMD	COMMAND/RESPONSE
3	VSS1	SUPPLY VOLTAGE GROUND
4	VDD1	SUPPLY VOLTAGE
5	CLK	CLOCK
6	VSS2	SUPPLY VOLTAGE GROUND
7	DAT0	DATA LINE BIT0
8	DAT1	DATA LINE BIT1
9	DAT2	DATA LINE BIT2

MMC CARD

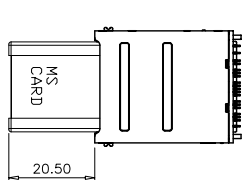
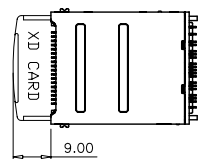
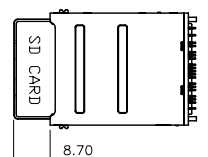
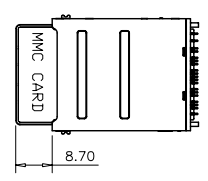
PIN#	NAME	DESCRIPTION
1	RSV	RESERVED FOR FUTURE USE
2	CMD	COMMAND/RESPONSE
3	VSS1	SUPPLY VOLTAGE GROUND
4	VDD	SUPPLY VOLTAGE
5	CLK	CLOCK
6	VSS2	SUPPLY VOLTAGE GROUND
7	DAT	DATA

XD DEFINITION

PIN NO.	FUNCTION
1/19	GND/CARD DETECT
2	READY/BUSY
3	READ ENABLE
4	CARD ENABLE
5	COMMAND LATCH ENABLE
6	ADDRESS LATCH ENABLE
7	WRITE ENABLE
8	WRITE PROTECT
9	GND
10	DAT0
11	DAT1
12	DAT2
13	DAT3
14	DAT4
15	DAT5
16	DAT6
17	DAT7
18/20	VCC

PIN#	NAME	DESCRIPTION
1	VSS	VSS
2	BS	SERIAL PROTOCOL BUS STATE SIGNAL
3	VCC	VCC
4	SDIO	SERIAL PROTOCOL DATA SIGNAL
5	RESERVED	RESERVED
6	INS	STICK INSERTION/EXTRACTION DETECT-TERMINAL
7	RESERVED	RESERVED
8	SCLK	SERIAL PROTOCOL CLOCK SIGNAL
9	VCC	VCC
10	VSS	VSS

NOTE:
 1.MATERIAL:
 HOUSING: HIGH TEMP. THERMOPLASTIC, UL94-V0, COLOR: BLACK;
 CONTACT(SD+MS+XD+WP+GD): ALLOY COPPER, THICKNESS =0.20MM;
 SHELL: ALLOY COPPER, THICKNESS =0.20MM;
 2.PLATING:
 CONTACT: 50u" MIN. NICKEL PLATED OVERALL,
 SEE ORDER P/N FOR MATING AREA,
 160u" Tin PLATED ON SOLDER AREA;
 SHELL: 50u" MIN. NICKEL PLATED OVERALL, GOLD FLASH ON SOLDER AREA;
 3.MATERIAL SHOULD BE FILLED AMPHENOL SPEC# SSN002.



UNLESS OTHERWISE SPECIFIED		APPROVAL		DATE	
TOLERANCES		DRAWN	Jahoon, Yod	04/12/07	
U.S.		CHECKED	DB,Geo	04/12/07	
METRIC		DRAWING FILE : DRAWING: SD+MM+PROT-X-AMW			
DIMENSIONS		ANGLE OF PROJECTION			
REMOVE SHARP EDGES		TITLE			
FOR MATERIALS AND FINISHES		4IN1 CONNECTOR			
SEE NOTE 1		(SD+MMC+MS+XD)			
SIZE		DRAWING NO.		REV.	
A3		C 4IN1 -PB-001 -X		A	
SCALE		NONE		SHEET 2 OF 2	