

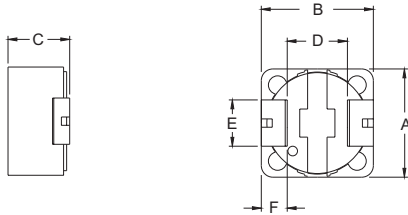
SMT Power Inductor

SIQ125R Type

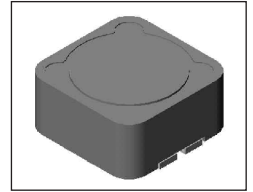
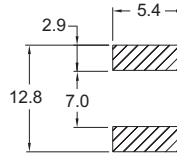
Features

- RoHS compliant.
- Magnetically shielded.
- Ideal for power source circuits, DC-DC converter, DC-AC inverters inductor applications.
- In addition to the standard versions shown here, customized inductors are available to meet your exact requirements.

Mechanical Dimension :



RECOMMENDED PAD PATTERNS



UNIT:mm/inch

A = 12.2 ± 0.3 / 0.480 ± 0.012

B = 12.2 ± 0.3 / 0.480 ± 0.012

C = 6.0 / 0.236 Max.

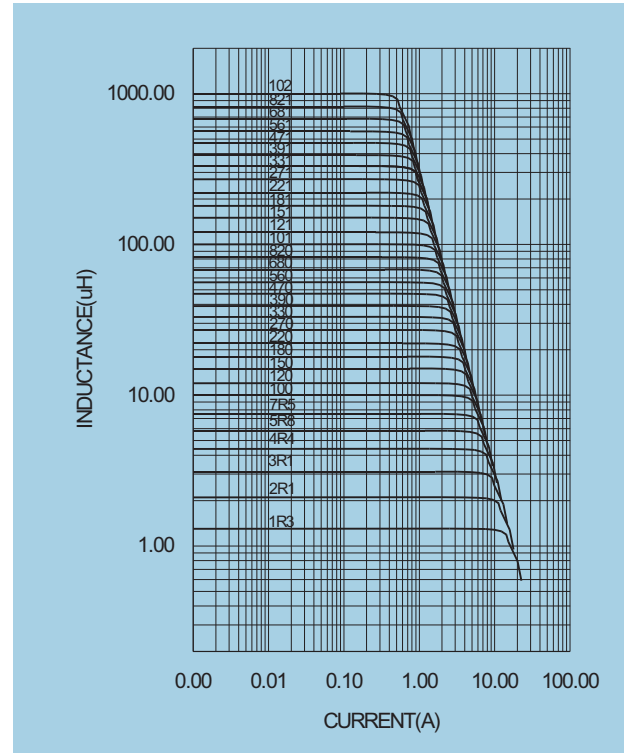
D = 7.6 ± 0.3 / 0.299 ± 0.012

E = 5.0 / 0.197

F = 2.2 / 0.087

Electrical Characteristics : 25°C, 100KHz, 0.1V for 0.8uH-8.2uH and all of SIQ125RA.
1KHz, 1V for 10~1000uH.

| PART NO. | L ¹ (uH) | DCR (mΩ) MAX | I _{rated} ² (A dc) |
|----------------|------------------------|-----------------|---|
| SIQ125RA - R82 | 0.82 | 3.2 | 16.80 |
| SIQ125R - 1R3 | 1.30 | 12.0 | 8.00 |
| SIQ125RA - 1R3 | 1.30 | 4.0 | 15.00 |
| SIQ125R - 2R1 | 2.10 | 1.4 | 7.00 |
| SIQ125RA - 2R1 | 2.10 | 5.3 | 8.00 |
| SIQ125RA - 2R8 | 2.80 | 8.1 | 7.00 |
| SIQ125R - 3R1 | 3.10 | 17.0 | 6.00 |
| SIQ125RA - 4R0 | 4.00 | 10.0 | 6.00 |
| SIQ125R - 4R4 | 4.40 | 20.0 | 5.00 |
| SIQ125RA - 4R7 | 4.70 | 15.0 | 8.00 |
| SIQ125R - 5R8 | 5.80 | 21.0 | 4.40 |
| SIQ125RA - 5R8 | 5.80 | 21.0 | 7.00 |
| SIQ125R - 7R5 | 7.50 | 24.0 | 4.20 |
| SIQ125RA - 8R2 | 8.20 | 23.0 | 6.00 |
| SIQ125R - 100 | 10.00 | 25.0 | 4.00 |
| SIQ125RA - 100 | 10.00 | 25.0 | 5.00 |
| SIQ125R - 120 | 12.00 | 27.0 | 3.50 |
| SIQ125R - 150 | 15.00 | 30.0 | 3.30 |
| SIQ125RA - 150 | 15.00 | 33.0 | 4.20 |
| SIQ125R - 180 | 18.00 | 34.0 | 3.00 |
| SIQ125RA - 180 | 18.00 | 45.0 | 4.20 |
| SIQ125R - 220 | 22.00 | 40.0 | 2.80 |
| SIQ125RA - 220 | 22.00 | 47.0 | 3.80 |
| SIQ125R - 270 | 27.00 | 51.0 | 2.30 |
| SIQ125R - 330 | 33.00 | 57.0 | 2.10 |
| SIQ125RA - 330 | 33.00 | 57.0 | 3.00 |
| SIQ125R - 390 | 39.00 | 68.0 | 2.00 |
| SIQ125R - 470 | 47.00 | 75.0 | 1.80 |
| SIQ125R - 560 | 56.00 | 110.0 | 1.70 |
| SIQ125R - 680 | 68.00 | 120.0 | 1.50 |
| SIQ125RA - 680 | 68.00 | 140.0 | 2.10 |
| SIQ125R - 820 | 82.00 | 140.0 | 1.40 |
| SIQ125R - 101 | 100.00 | 160.0 | 1.30 |
| SIQ125R - 121 | 120.00 | 170.0 | 1.10 |
| SIQ125R - 151 | 150.00 | 230.0 | 1.00 |
| SIQ125R - 181 | 180.00 | 290.0 | 0.90 |
| SIQ125R - 221 | 220.00 | 400.0 | 0.80 |
| SIQ125R - 271 | 270.00 | 460.0 | 0.75 |
| SIQ125R - 331 | 330.00 | 510.0 | 0.68 |
| SIQ125R - 391 | 390.00 | 690.0 | 0.65 |
| SIQ125R - 471 | 470.00 | 770.0 | 0.58 |
| SIQ125R - 561 | 560.00 | 860.0 | 0.54 |
| SIQ125R - 681 | 680.00 | 1200.0 | 0.48 |
| SIQ125R - 821 | 820.00 | 1340.0 | 0.43 |
| SIQ125R - 102 | 1000.00 | 1530.0 | 0.40 |



1. Tolerance of inductance : +30%/-20% for 0.82~8.25uH, ±20% for 10~1000uH.
2. I_{rated} is the DC current which cause the inductance drop less than 25% of its nominal inductance without current and the surface temperature of the part increase less than 45°C.
3. Operating temperature: -20°C to 105°C (including self-temperature rise).



DELTA ELECTRONICS, INC.

(TAOYUAN PLANT CPBG) 252, SAN YING ROAD, KUEISAN INDUSTRIAL ZONE, TAOYUAN SHIEN, 333, TAIWAN, R.O.C.

TEL: 886-3-3591968; FAX: 886-3-3591991

<http://www.deltawww.com>