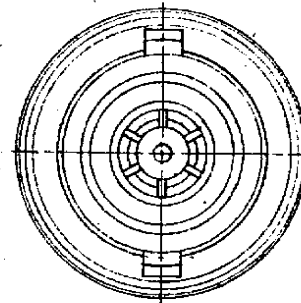
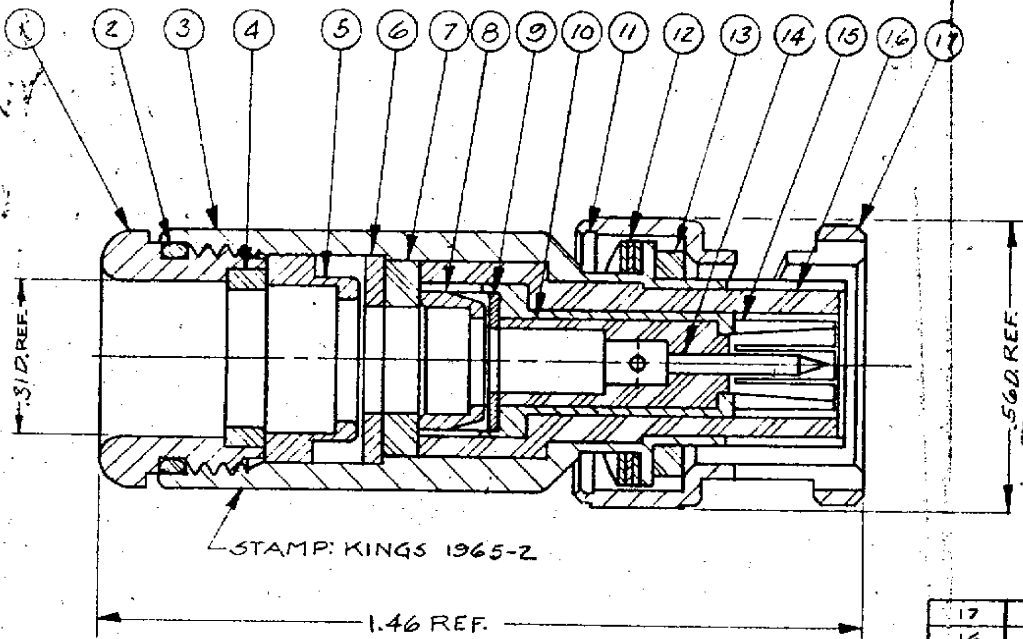


DASH NO.	DESCRIPTION	MADE FROM
----------	-------------	-----------



REVISION	
ISSUE	CHANGES
2	CN-15596A GA 23 MAR 76
3	CN 15921A GA 15 JUL 76
4	CN 25087C M.A. 2 SEP 83
5	CN 28495D AJ 10 DEC 86
6	CN 31391A LI 28 NOV 86
7	CN 34639 C KH 17 MAY 93

1965-2

NOTES:

1. FOR USE WITH ESSEX 21-204 CABLE.
2. FOR CABLING INSTRUCTIONS SEE CP-1301A.

UNLESS OTHERWISE SPECIFIED:

- | | |
|--|--|
| 1. TOLERANCES: FRACTIONS & 2 PLACE DECIMALS $\pm .010$ | 2. REMOVE ALL BURRS. BREAK SHARP EDGES .005 MAX. |
| 3 PLACE DECIMALS $\pm .004$ | 3. NO FILLETS PERMITTED. |
| ANGLES $\pm 0^{\circ} 30'$ | 4. SURFACE ROUGHNESS 63 MICROINCHES RMS MAX. |
| T. I. R. CONCENTRICITY OF ANY 2 DIAMETERS MAY NOT EXCEED HALF THE SUM OF THEIR TOLERANCES. | 5. ALL DIMENSIONS PRIOR TO PLATING. |

17	1	BAYONET SLEEVE	
16	1	INSULATOR	
15	1	OUTER CONTACT	
14	1	BNC CONTACT M	C-1-4896-3M99
13	1	GASKET	
12	1	SPRING WASHER	
11	1	CAM LEVER	
10	1	INSULATOR	
9	1	WASHER	C-19-112-12-MCT
8	1	BRAID CLAMP	1-1117-3MCT
7	1	INSULATOR	
6	1	RETAINER	C-19-112-8-MCT
5	1	BRAID CLAMP	C-19-112-7-MCT
4	1	GASKET	C-19-112-6-M99
3	1	BODY	
2	1	O-RING	C-19-112-5-M99
1	1	CLAMP NUT	C-19-112-16-MCT

USED ON:	
REF:	
FINISH	
SPEC.	KER-1000A
MATL.	
SPEC.	
BNC TRIAX PLUG	
DRAWN GINO	DATE 23 MAR 76
APPR. [Signature]	DATE 23 MAR 76

ITEM	REQ'D	DESCRIPTION	PART NO.
------	-------	-------------	----------

KINGS ELECTRONICS
40 MARLBOROUGH ROAD
TUCKAHOE, N. Y. 10707

1965-2

S-D