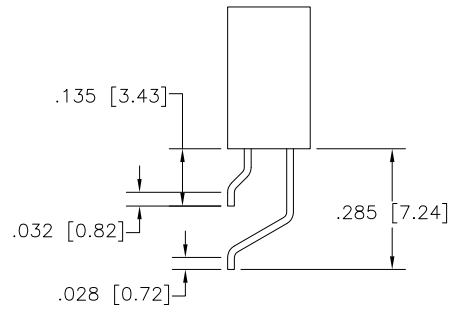
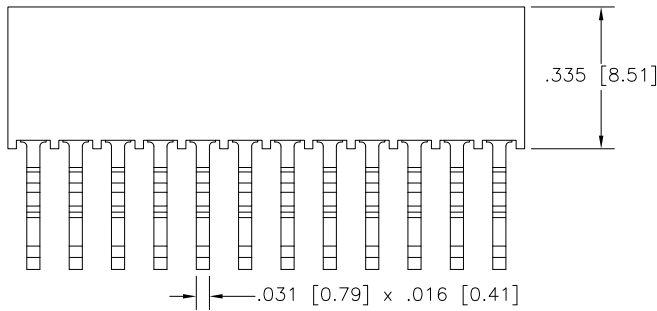
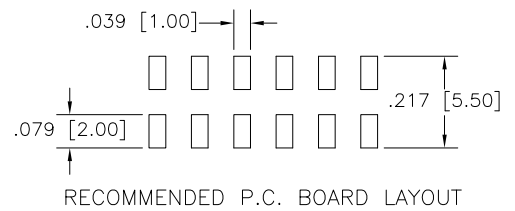
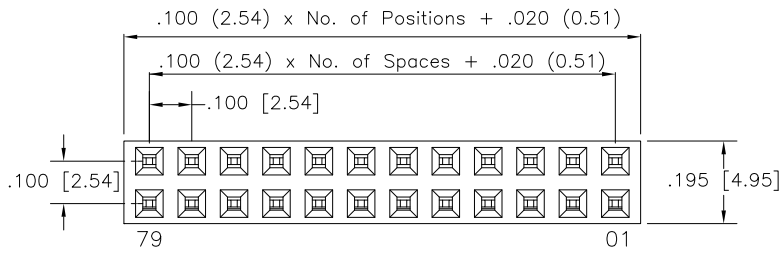


# Major League Electronics .100 cl Socket Strips - Surface Mount - Horizontal



## Ordering Information

SSHSM-1  - D - 02 -  - H -  -  - LF

Pins Per Row  
01 - 40

Row Specification  
D = Dual Row

Surface Mount

Lead Free

Packing Information  
TR = Tape and Reel  
TB = Tube

Polarized Position  
Leave blank if not needed  
If required, specify empty pin position, e.g. 012 for Pin 12

Horizontal

Plating Options	
30µ Gold on Contact Area / Matte Tin on Tail	H
Matte Tin all Over	T
10µ Gold on Contact Area / Matte Tin on Tail	GT
10µ Gold on Contact Area / Flash on Tail	G
Gold Flash over Entire Pin	F

## Specifications

Insertion Depth: .145 (3.68) to .250 (6.35)

Insertion Force - Per Contact - H Plating:  
6oz. (1,67N) avg with .025 (0,64mm) sq. pin

Withdrawal Force - Per Contact - H Plating:  
5oz. (1,39N) avg with .025 (0,64mm) sq. pin

Current Rating: 3.0 Ampere

Insulation Resistance: 1000MΩ Min.

Dielectric Withstanding: 1000V AC/Min.

Contact Resistance: 20 mΩ Max.

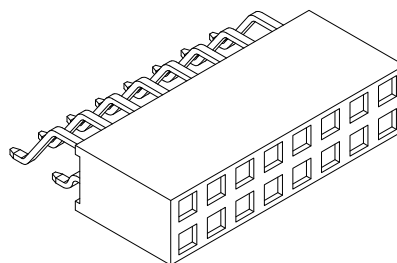
Operating Temperature: -25°C to + 105°C

Max. Process Temperature:

- Peak: 260°C up to 20 secs.
- Process: 230°C up to 60 secs.
- Wave: 260°C up to 6 secs.
- Reflow: 260°C up to 10 secs.
- Manual Solder: 350°C up to 5 secs.

## Materials

Contact Material: Phosphor Bronze  
Contact Underplating: 50µ Ni  
Insulator Material: Nylon 6T



## Mates with:

BSTC, TSHCR,  
BSTCM, TSHCRE,  
BSTCR, TSHCRSM,  
BSTCRSM, TSHR,  
BSTS, TSHRE,  
LBSTCM, TSHS,  
LTSHCR, TSHSCM,  
LTSHCRE, TSHSM,  
LTSHR, ULTSHSM,  
LTSHRE, ULTSHC,  
LTSHSM, ULTSHCR  
TSHC,

Products cut to specific sizes are uncancellable/nonreturnable

Parts are subject to change without notice

SSHSM-1-DH SERIES

Socket Strips - Surface Mount - Horizontal

22 AUG 08

Scale  
NTS

UNLESS OTHERWISE SPECIFIED  
DIMENSIONS IN INCHES (MM)  
TOLERANCES ARE:

ONE PLACE DECIMALS ±.100  
TWO PLACE DECIMALS ±.010  
THREE PLACE DECIMALS ±.005  
FOUR PLACE DECIMALS ±.0020



4235 Earnings Way, New Albany, Indiana, 47150, USA  
1-800-782-3486 (USA/Canada/Mexico)  
Tel: 812-944-7244  
Fax: 812-944-7268  
E-mail: mle@mlelectronics.com  
Web: www.mlelectronics.com

Revision  
C

Sheet  
1/2

# Revisions

Revision B - (8th July 2010)

Change Insertion Depth: From .138 to .248 now .145 to .250.

Revision C - (25th March 2011)

Packing option added: TB = Tube

UNLESS OTHERWISE SPECIFIED  
DIMENSIONS IN INCHES (MM)  
TOLERANCES ARE:  
ONE PLACE DECIMALS ±.100  
TWO PLACE DECIMALS ±.010  
THREE PLACE DECIMALS ±.005  
FOUR PLACE DECIMALS ±.0020

SSHSM-1-DH SERIES

Socket Strips - Surface Mount - Horizontal

22 AUG 08

Scale  
NTS



4235 Earnings Way, New Albany, Indiana, 47150, USA  
1-800-782-3486 (USA/Canada/Mexico)  
Tel: 812-944-7244  
Fax: 812-944-7268  
E-mail: [mle@mlelectronics.com](mailto:mle@mlelectronics.com)  
Web: [www.mlelectronics.com](http://www.mlelectronics.com)

Revision  
C

Sheet  
2/2