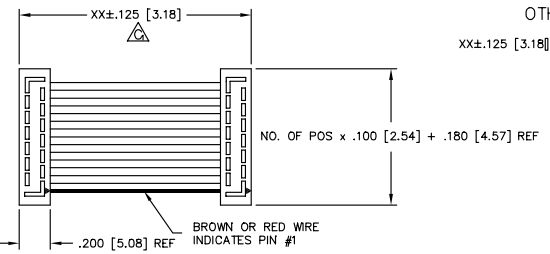
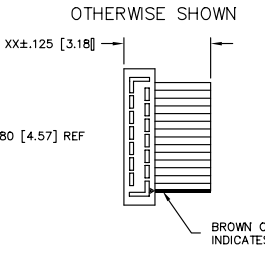


DIMENSIONS ARE IN INCHES UNLESS OTHERWISE NOTED		TOLERANCES ARE:	
ONE PLACE DECIMALS ± .1	THREE PLACE DECIMALS ± .005	ANGLES ± 1°	
TWO PLACE DECIMALS ± .01	FOUR PLACE DECIMALS ± .0020		

-D (DOUBLE END) FIGURE 1



-S (SINGLE END) SAME AS FIG. 1 UNLESS OTHERWISE SHOWN



-T (TRANSFER END) SAME AS FIG. 1 UNLESS OTHERWISE SHOWN

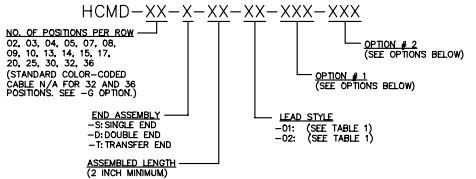
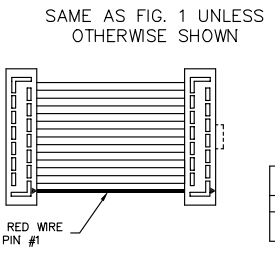


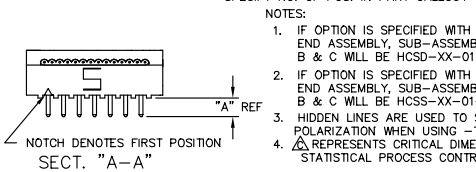
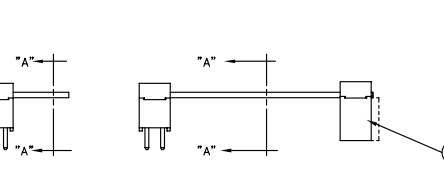
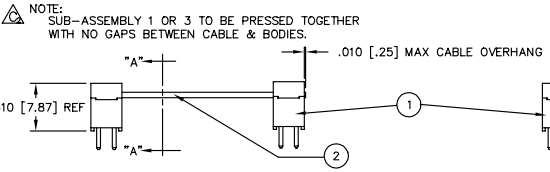
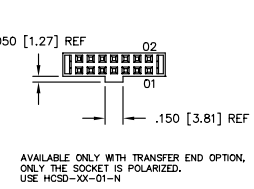
TABLE 1

LEAD STYLE	"A"	1	2	3 (-T END ONLY)
-01	.120 [3.05]	HCMD-XX-01-X	CB-XX-28-7/36-050-C	HCS-XX-01-X
-02	.230 [5.84]	HCMD-XX-02-X	CB-XX-28-7/36-050-C	HCS-XX-01-X

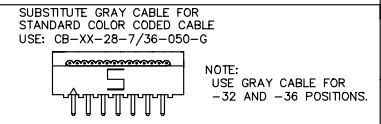
PLATING

-T = .000150 BRIGHT ACID TIN ON ENTIRE CONTACT (USED ONLY WITH FEMALE STRIP OF A -T END OPTION)
 -S = .000010 AU ON TAIL AREA WITH THE BALANCE OF .000150 BRIGHT ACID TIN = USE HCMD-XX-XX-S. (NOT TO BE USED WITH FEMALE STRIP OF A -T END OPTION.)
 (STANDARD PLATING IS .000150 BRIGHT ACID TIN OVER ENTIRE TERMINAL - USE HCMD-XX-XX-T. FOR A -T OPTION, STANDARD PLATING FOR THE FEMALE END IS .000150 BRIGHT ACID TIN, EXCEPT CONTACT AREA IS .000010 AU. - USE HCS-XX-01-S.)

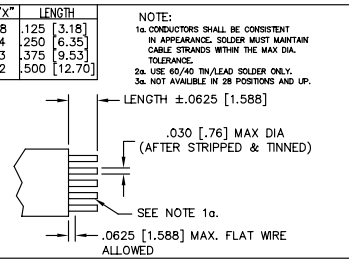
-N NOTCH POLARIZATION



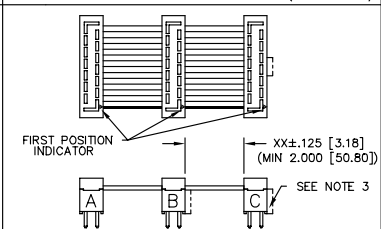
-G GRAY CABLE



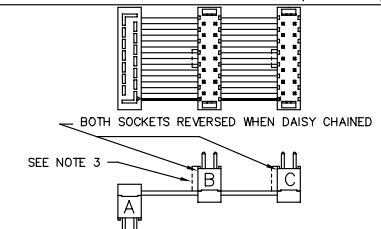
-ST"X" STRIPPED & TINNED



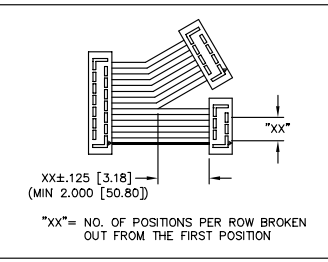
-D"XX" DAISY CHAIN-DOUBLE (SEE NOTE 1.)



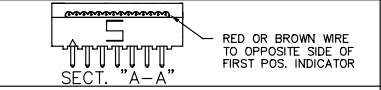
-R REVERSED CONNECTOR (SEE NOTE 1.)



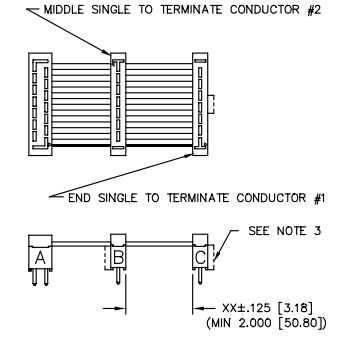
-B"XX" BREAKOUT OPTION



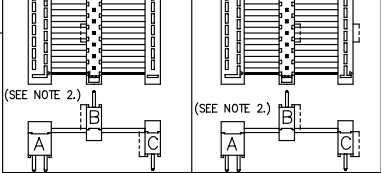
-RW REVERSE WIRING



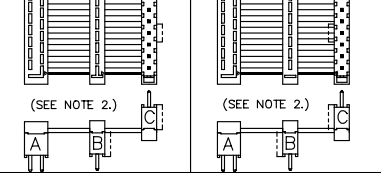
-S"XX" DAISY CHAIN- SINGLE (SEE NOTE 2.)



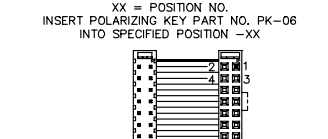
-W"XX"-M (MIDDLE REVERSED)



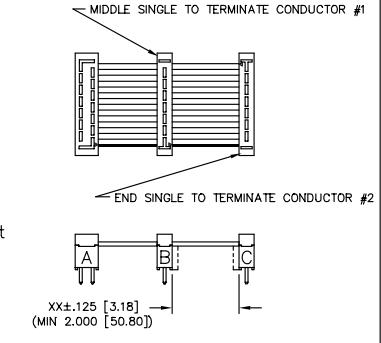
-S"XX"-M (MIDDLE REVERSED)



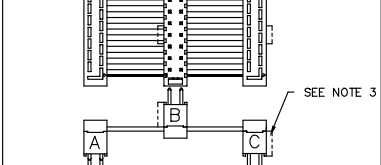
-P"XX" POLARIZED MATING



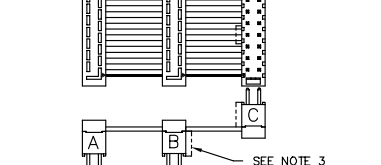
-W"XX" WIRING REVERSED (SEE NOTE 2.)



-D"XX"-M (MIDDLE REVERSED) (SEE NOTE 1.)



-D"XX"-O (OUTSIDE REVERSED) (SEE NOTE 1.)



NOTE: OPTION ONLY AVAILABLE ON FEMALE END OF THE -T (TRANSFER END) OPTION. THE POLARIZED POSITION WILL HAVE THE SAME ELECTRICAL POSITION FROM THE BROWN WIRE FIRST POSITION INDICATOR.

Do not scale from this print

PROPRIETARY NOTE
 THIS DOCUMENT CONTAINS INFORMATION CONFIDENTIAL AND PROPRIETARY TO SAMTEC INC. AND SHALL NOT BE REPRODUCED OR TRANSMITTED IN ANY FORM OR BY ANY MEANS, ELECTRONIC OR MECHANICAL, INCLUDING PHOTOCOPYING, RECORDING, OR BY ANY INFORMATION STORAGE AND RETRIEVAL SYSTEM, WITHOUT THE WRITTEN CONSENT OF SAMTEC INC.