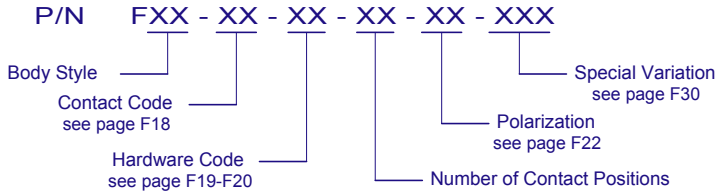


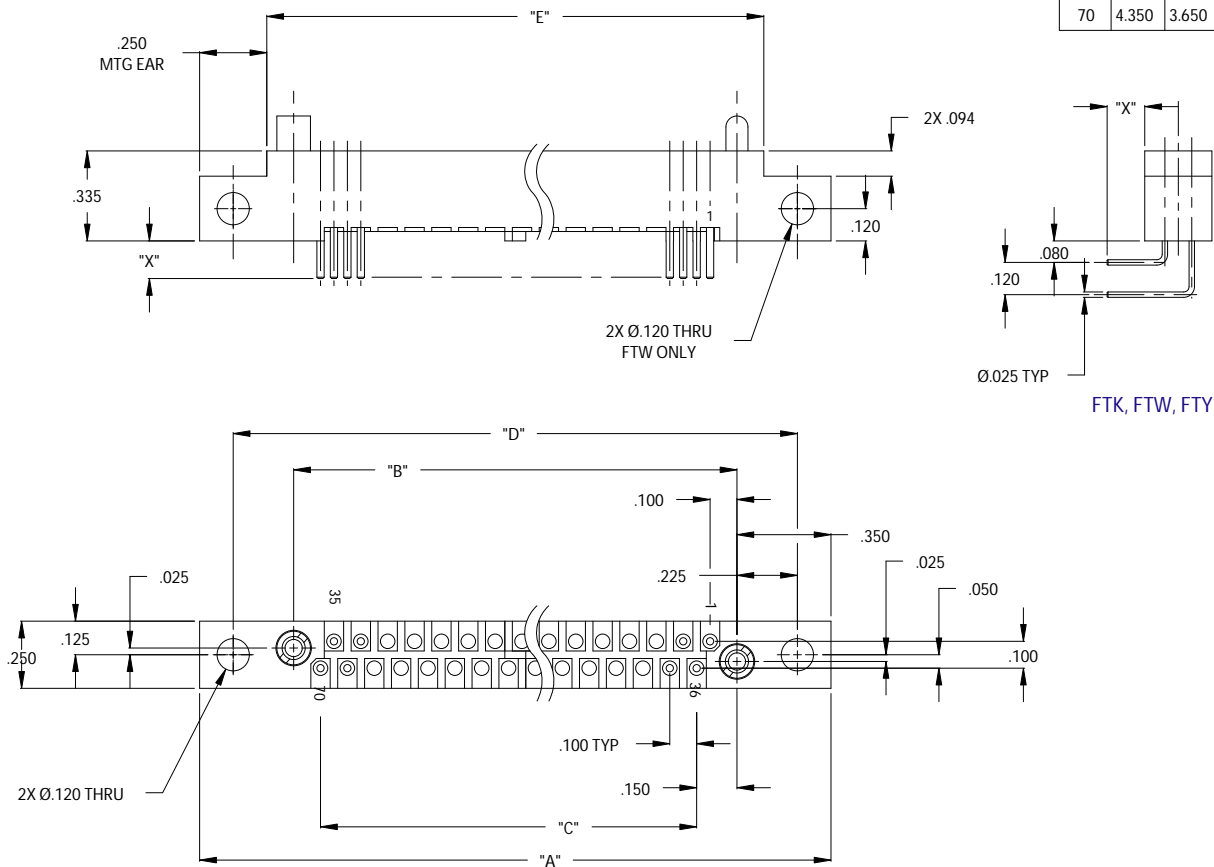
.100 SERIES 2 ROW STRAIGHT RECEPTACLE or PLUG AND RIGHT ANGLE RECEPTACLE

FBR | M55302 / 56 Plug
M55302 / 64 Receptacle

FDR - M55302 / 58 Receptacle



Dimensions					
No. of Cnt's	"A"	"B"	"C"	"D"	"E"
10	1.350	.650	.400	1.100	.850
14	1.550	.850	.600	1.300	1.050
20	1.850	1.150	.900	1.600	1.350
24	2.050	1.350	1.100	1.800	1.550
26	2.150	1.450	1.200	1.900	1.650
30	2.350	1.650	1.400	2.100	1.850
36	2.650	1.950	1.700	2.400	2.150
40	2.850	2.150	1.900	2.600	2.350
44	3.050	2.350	2.100	2.800	2.550
50	3.350	2.650	2.400	3.100	2.850
54	3.550	2.850	2.600	3.300	3.050
56	3.650	2.950	2.700	3.400	3.150
60	3.850	3.150	2.900	3.600	3.350
66	4.150	3.450	3.200	3.900	3.650
70	4.350	3.650	3.400	4.100	3.850



PLUG | FDR - AS SHOWN WITH MTG EARS
FBR - WITHOUT MTG EARS

RECEPTACLE | FDR - AS SHOWN WITH MTG EARS
FBR - WITHOUT MTG EARS
FTW - AS SHOWN WITH MTG EARS 2X 0.120 THRU
FTY - WITHOUT MTG EARS
FTK - WITH MTG EARS

MATING CONNECTORS:

FAR, FER, FKA, FKE, FKF, FKH
FKJ, FKR, FKV, FKZ, FTG, FTF, FTJ

FAR, FCR, FER, FFR, FGR
FKA, FKE, FKF, FKH
FKJ, FKR, FKV, FKZ