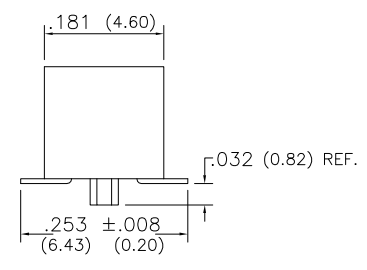
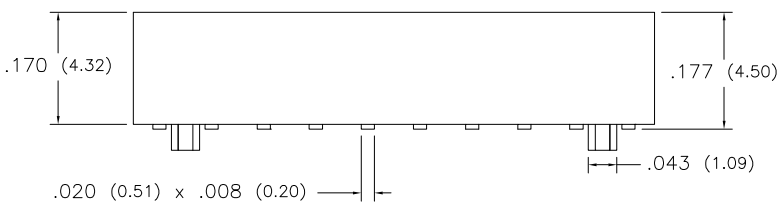
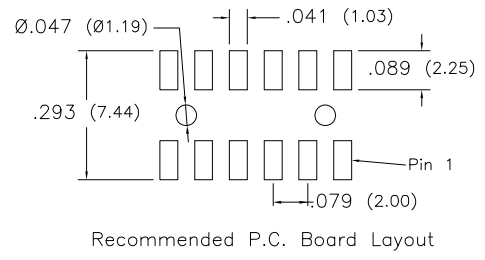
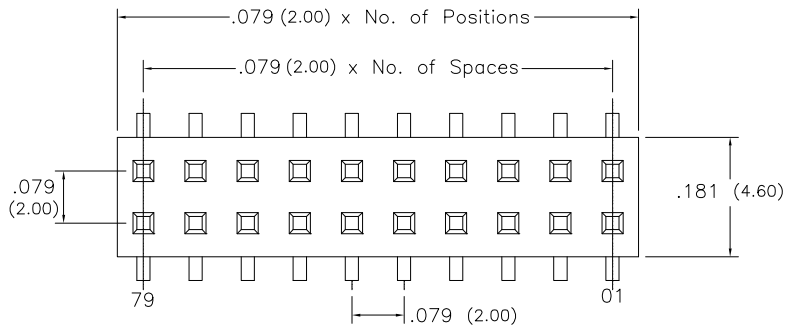


Major League Electronics .079 cl Low Profile Socket Strips - Surface Mount - Vertical



Tails may be clipped to achieve desired pin length

Ordering Information

LSSHSM-2 [XX] - D - [X] - [XX] - V - [XXX] - TR - P - [XX] - LF

Pins Per Row: 02 - 40
 Row Specification: D = Dual Row
 Low Insertion Option: Leave blank for Standard 6oz. Insertion Force, Fill with 'L' for Low 3.3oz. Insertion Force
 Packing Information: TR-P = Tape and Reel with Plastic Pick and Place pad
 Polarized Position: Leave blank if not needed, If required, specify empty pin position, e.g. 012 for Pin 12
 Vertical
 Lead Free
 Alignment Pin: Leave blank if not needed, AP = With

Plating Options	
30µ Gold on Contact Area / Matte Tin on Tail	H
Matte Tin All Over	T
10µ Gold on Contact Area / Matte Tin on Tail	GT

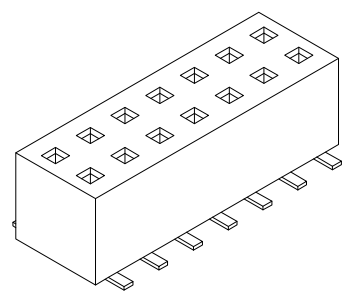
- Mates with:
- BSTC,
 - BSTCM,
 - BSTCR,
 - BSTCRSM,
 - BSTS,
 - TBSTC,
 - TBSTCM,
 - TBSTS,
 - TBSTCR,
 - TBSTCRSM,
 - TBSTS,
 - TSHC,
 - TSHCR,
 - TSHCRE,
 - TSHCRSM,
 - TSHR,
 - TSHRE,
 - TSHS,
 - TSHSCM,
 - TTSHC,
 - TTSHCR,
 - TTSHCRE,
 - TTSHR,
 - TTSHRE,
 - TTSHS,
 - TTSHSM

Specifications

Insertion Force - Single Contact only - H Plating:
 4oz. (1,11N) avg with .079 (2,00mm) sq. pin
 Withdrawal Force - Single Contact only - H Plating:
 3oz. (0,83N) avg with .079 (2,00mm) sq. pin
 Current Rating: 2.0 Ampere
 Insulation Resistance: 1000MΩ Min.
 Dielectric Withstanding: 500V AC
 Contact Resistance: 20 mΩ Max.
 Operating Temperature: -40°C to + 105°C
 Max. Process Temperature:
 Peak: 260°C up to 20 secs.
 Process: 230°C up to 60 secs.
 Wave: 260°C up to 6 secs.
 Reflow: 260°C up to 10 secs.
 Manual Solder: 350°C up to 5 secs.

Materials

Contact Material: Copper Alloy
 Insulator Material: Nylon 6T
 Plating: Au or Sn over 50µ" (1,27) Ni



Products cut to specific sizes are uncancellable/nonreturnable Parts are subject to change without notice

LSSHSM-2-DV SERIES	Low Profile Socket Strips - Vertical	19 SEPT 08	Scale NTS
	4235 Earnings Way, New Albany, Indiana, 47150, USA 1-800-782-3486 (USA/Canada/Mexico) Tel: 812-944-7244 Fax: 812-944-7268 E-mail: mle@mlelectronics.com Web: www.mlelectronics.com	Edition 1	
		Sheet 1/1	

UNLESS OTHERWISE SPECIFIED
 DIMENSIONS IN INCHES (MM)
 TOLERANCES ARE:
 ONE PLACE DECIMALS ±.100
 TWO PLACE DECIMALS ±.010
 THREE PLACE DECIMALS ±.005
 FOUR PLACE DECIMALS ±.002