

Serien
Series

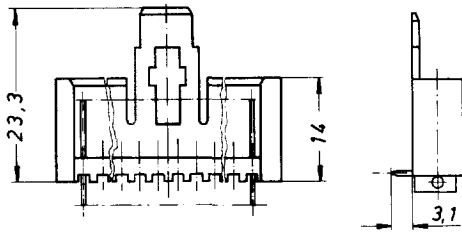
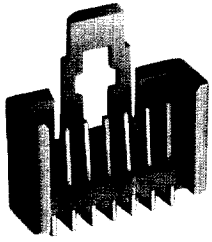
MKS 2850, 2950

Stiftwannen, liegend, mit Rastlasche
Pin connectors with snap-in locking device for horizontal connections



UL-recognized component, E 96569

Serie MKS 2850, Lötstifte In-line, Rastlasche unten
Series MKS 2850, solder pins in line, snap-in locking device underneath

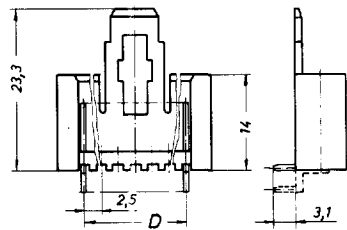
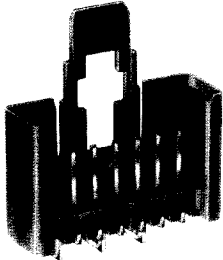


Polzahl Positions	Artikel-Nummer Part number	Abmessungen C Dimensions C	Abmessungen D Dimensions D
2	MKS 2851 - 6 - 0 - 202	9,7	2,5
3	MKS 2853 - 6 - 0 - 303	12,2	5,0
4	MKS 2854 - 6 - 0 - 404	14,7	7,5
5	MKS 2855 - 6 - 0 - 505	17,2	10,0
6	MKS 2856 - 6 - 0 - 606	19,7	12,5
8	MKS 2858 - 6 - 0 - 808	24,7	17,5
10	MKS 2860 - 6 - 0 - 1010	29,7	22,5
12	MKS 2862 - 6 - 0 - 1212	34,7	27,5
16	MKS 2866 - 6 - 0 - 1616	44,7	37,5
20	MKS 2870 - 6 - 0 - 2020	54,7	47,5



UL-recognized component, E 96569

Serie MKS 2950, Lötstifte versetzt, Rastlasche auf Platine
Series MKS 2950, solder pins staggered, snap-in locking device on board side



Polzahl Positions	Artikel-Nummer Part number	Abmessungen C Dimensions C	Abmessungen D Dimensions D
2	MKS 2951 - 6 - 0 - 202	9,7	2,5
3	MKS 2953 - 6 - 0 - 303	12,2	5,0
4	MKS 2954 - 6 - 0 - 404	14,7	7,5
5	MKS 2955 - 6 - 0 - 505	17,2	10,0
7	MKS 2957 - 6 - 0 - 707	22,2	15,0
10	MKS 2960 - 6 - 0 - 1010	29,7	22,5
14	MKS 2964 - 6 - 0 - 1414	39,7	32,5
18	MKS 2968 - 6 - 0 - 1818	49,7	42,5
20	MKS 2970 - 6 - 0 - 2020	54,7	47,5

