

DASH NO	MODEL NUMBER
-1	ADPL80-A1-PL80
-2	ADPL80-A2-PL80
-3	ADPL80-A3-PL80
-4	ADPL80-A4-PL80
-5	ADPL80-A1-PL380
-6	ADPL80-A2-PL380
-7	ADPL80-A3-PL380
-8	ADPL80-A4-PL380
-9	ADPL380-A1-PL380
-10	ADPL380-A2-PL380
-11	ADPL380-A3-PL380
-12	ADPL380-A4-PL380
-13	ADCJ80-A1-PL80
-14	ADCJ80-A2-PL80
-15	ADCJ80-A3-PL80
-16	ADCJ80-A4-PL80
-17	ADCJ80-A1-PL380
-18	ADCJ80-A2-PL380
-19	ADCJ80-A3-PL380
-20	ADCJ80-A4-PL380
-21	ADCJ380-A1-PL80
-22	ADCJ380-A2-PL80
-23	ADCJ380-A3-PL80
-24	ADCJ380-A4-PL80
-25	ADCJ380-A1-PL380
-26	ADCJ380-A2-PL380
-27	ADCJ380-A3-PL380
-28	ADCJ380-A4-PL380
-29	ADCJ380-A1-PL803
-30	ADCJ80-A1-CJ80
-31	ADCJ80-A6-PL80
-32	ADCJ80-A1-PL803

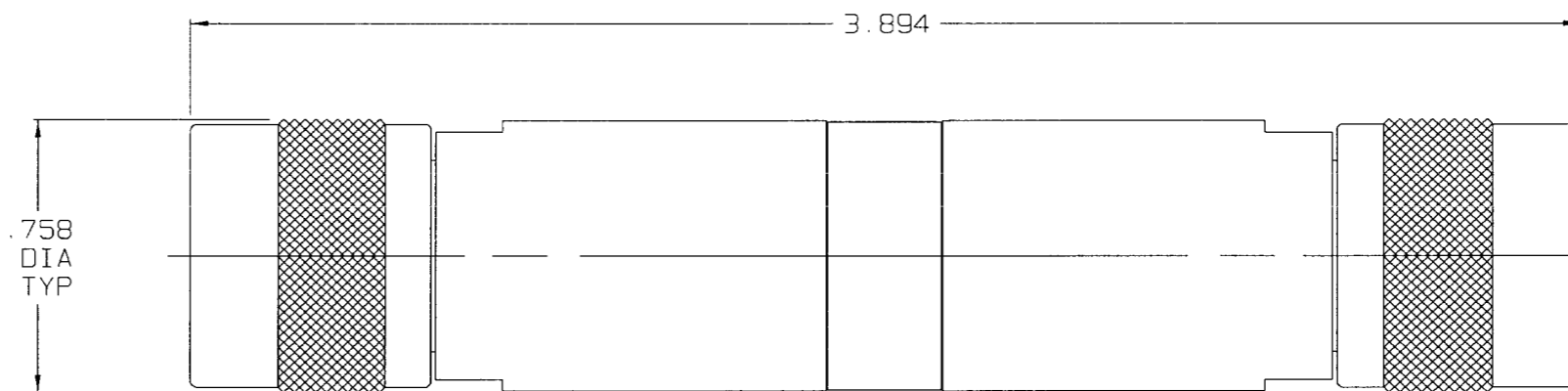
DATA CONTAINED IN THIS DOCUMENT IS PROPRIETARY TO TROMPETER ELECTRONICS, INC. AND SHALL NOT BE DISCLOSED, COPIED OR USED FOR PROCUREMENT OR MANUFACTURE WITHOUT EXPRESS WRITTEN PERMISSION OF TROMPETER ELECTRONICS, INC.

**REVISIONS**

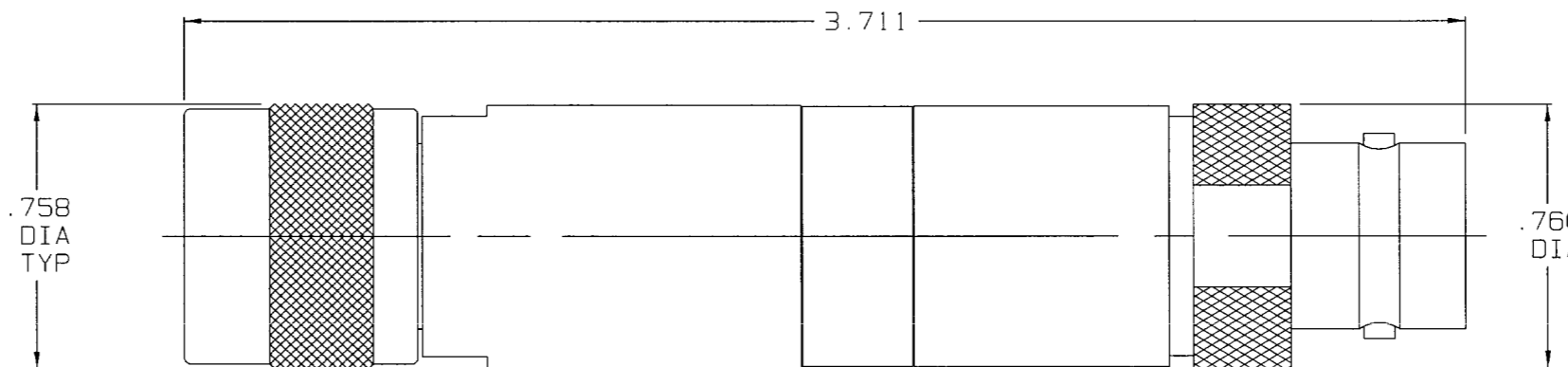
REV	DESCRIPTION	DATE	APPROVED
G	REVISED PER ECO #14950	3/4/03	WZ

305-0490

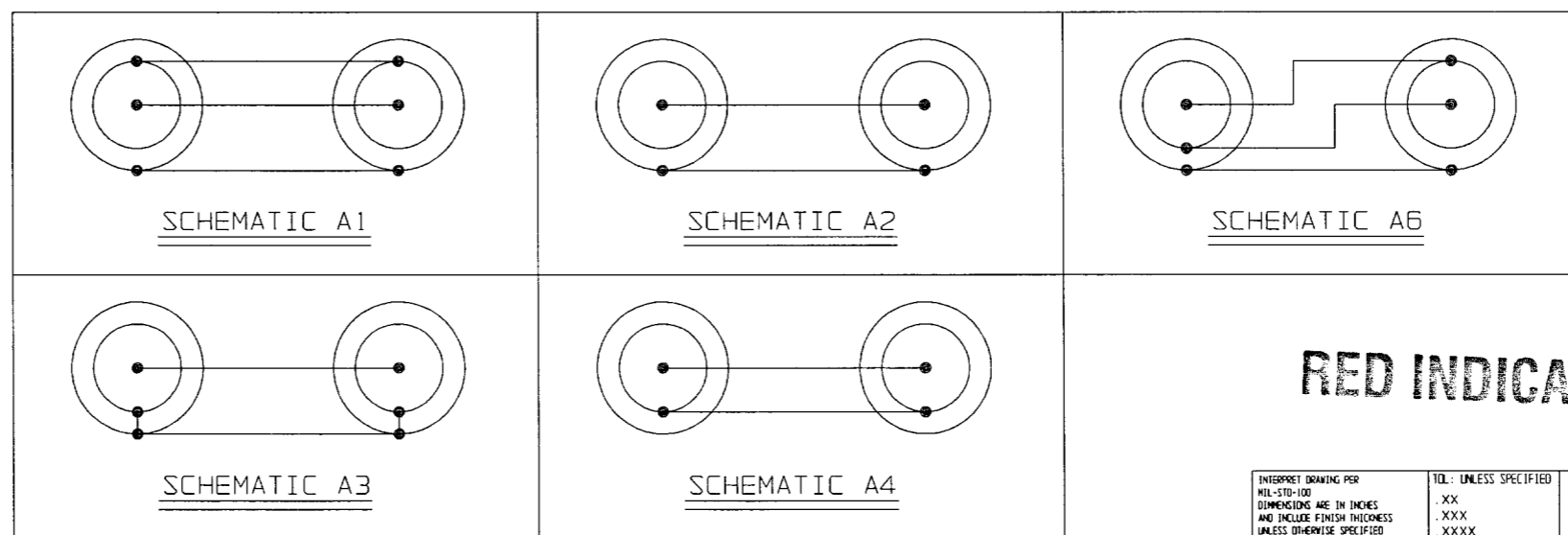
SH 1



-1 SHOWN



-13 SHOWN



**RED INDICATES ORIGINAL**

2. WITHIN SERIES ADAPTER "C" TYPE TWINAX/TRIAX PLUG TO "C" TYPE TWINAX/TRIAX PLUG/JACK

1. FINISH: TFS-1A (NICKEL)

INTERPRET DRAWING PER MIL-STD-100 DIMENSIONS ARE IN INCHES AND INCLUDE FINISH THICKNESS UNLESS OTHERWISE SPECIFIED		TOL: UNLESS SPECIFIED .XX .XXX .XXXX ANGLES			TITLE: AD/CJ80/CJ380-A1/A2/A3/A4-PL80/PL380/CJ80/CJ380
DRAWN AAH	DATE 2-28-03	MATERIAL:	FINISH:		
CHECKED DD	DATE 2/28/03	SIZE A	CAGE CODE 14949	DRAWING NO. 305-0490	REV. G
QUALITY WZ	DATE 3/4/03	SCALE 2/1	DATE: 1/25/03	SHEET 1C	
HAND WZ	DATE 3/4/03	NEXT ASSY	CAD FILE NO. 305-0490G	DO NOT SCALE DWG	