

SMD Unshielded Power Inductors

SSL04LP Series

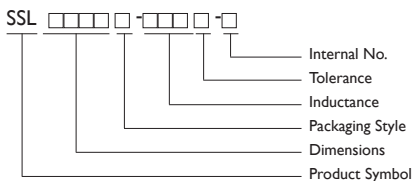
DC-DC Conversion



FEATURES

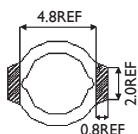
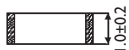
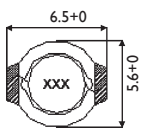
- High energy storage and very low resistance.
- Smallest size and high performance

PRODUCT IDENTIFICATION



- Packaging: T : Tape and Reel, B : Bulk
- Tolerance: M: $\pm 20\%$
- Note: YAGEO will start to release SSL Series inductors with lead-free terminals which meet SONY SS-00259's criteria for lead-free product in Q2 of 2004, and YAGEO Internal No will be changed to "N" as identification. Ex. SSL04LP-1R2M-N

SHAPES AND DIMENSIONS



Dimensions : mm

For SSL series provide excellent current carrying capabilities in a small footprint. They have a flat top for reliable pick and place operations and features robust temperature deflection. In addition to the standard versions shown here, custom inductors are available to meet your exact requirement.

APPLICATIONS

Notebook computers, Sep-up and step-down converters
Flash, memory programmers. etc...

ELECTRICAL CHARACTERISTICS

PART NO.	INDUCTANCE (μH) *	TOLERANCE ($\pm\%$)	DC RESISTANCE (Ω°) _{max}	Isat ** (A)	I _{rms} *** (A)
SSL04LP-1R2M-S	1.2	20	0.08	2.10	1.70
SSL04LP-1R5M-S	1.5	20	0.10	1.90	1.50
SSL04LP-2R2M-S	2.2	20	0.12	1.60	1.40
SSL04LP-3R3M-S	3.3	20	0.16	1.30	1.20
SSL04LP-4R7M-S	4.7	20	0.20	1.10	1.10
SSL04LP-6R8M-S	6.8	20	0.32	0.90	0.85
SSL04LP-100M-S	10	20	0.41	0.80	0.75
SSL04LP-150M-S	15	20	0.55	0.65	0.60
SSL04LP-220M-S	22	20	0.85	0.50	0.52
SSL04LP-330M-S	33	20	1.30	0.40	0.42
SSL04LP-470M-S	47	20	1.80	0.35	0.36
SSL04LP-680M-S	68	20	2.50	0.30	0.30
SSL04LP-101M-S	100	20	3.50	0.25	0.26
SSL04LP-151M-S	150	20	5.00	0.18	0.21
SSL04LP-221M-S	220	20	7.00	0.16	0.18
SSL04LP-331M-S	330	20	15.0	0.13	0.13

* Inductance Tested at 100 KHz , 0.1 Vrms

** Inductance drops = 10% typ. at Isat.

*** $\Delta T = 30^{\circ}\text{C}$ rise typ at I_{rms}

**** Operating Temperature Range -40°C to $+85\pm\text{C}$



ELECTRICAL CHARACTERISTICS : LEAD-FREE & ROHS COMPLIANCE

TYPE	Inductance(μ H)	Test Freq(KHz)	RDC(Ω)Max	Isat(A)Max	Irms(A)
SSL04LP-1R2 <input type="checkbox"/> -N	1.2	0.1V 100KHz	0.08	2.1	3.6
SSL04LP-1R5 <input type="checkbox"/> -N	1.5	0.1V 100KHz	0.1	1.9	2.8
SSL04LP-2R2 <input type="checkbox"/> -N	2.2	0.1V 100KHz	0.12	1.6	2.4
SSL04LP-3R3 <input type="checkbox"/> -N	3.3	0.1V 100KHz	0.16	1.3	2
SSL04LP-4R7 <input type="checkbox"/> -N	4.7	0.1V 100KHz	0.2	1.1	1.7
SSL04LP-6R8 <input type="checkbox"/> -N	6.8	0.1V 100KHz	0.32	0.9	1.2
SSL04LP-100 <input type="checkbox"/> -N	10	0.1V 100KHz	0.41	0.8	1.1
SSL04LP-150 <input type="checkbox"/> -N	15	0.1V 100KHz	0.55	0.65	0.9
SSL04LP-220 <input type="checkbox"/> -N	22	0.1V 100KHz	0.85	0.5	0.83
SSL04LP-330 <input type="checkbox"/> -N	33	0.1V 100KHz	1.3	0.4	0.62
SSL04LP-470 <input type="checkbox"/> -N	47	0.1V 100KHz	1.8	0.35	0.52
SSL04LP-680 <input type="checkbox"/> -N	68	0.1V 100KHz	2.5	0.3	0.35
SSL04LP-101 <input type="checkbox"/> -N	100	0.1V 100KHz	3.5	0.25	0.27
SSL04LP-151 <input type="checkbox"/> -N	150	0.1V 100KHz	5	0.18	0.24
SSL04LP-221 <input type="checkbox"/> -N	220	0.1V 100KHz	7	0.16	0.23
SSL04LP-331 <input type="checkbox"/> -N	330	0.1V 100KHz	15	0.13	0.13

NOTE : -tolerance K= \pm 10% / \pm 15% / M= \pm 20% / N= \pm 40% -20%

1.Operating temperature range -40°C~85°C

2.Inductance drop = 10% typ. at Isat

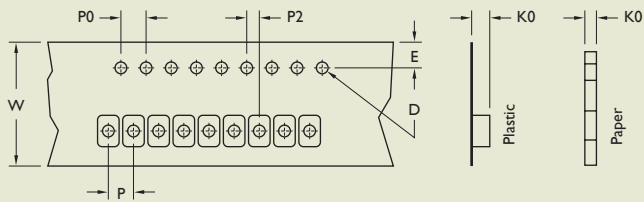
3. Δ T=40°C rise typ at I rms.

"-N"FOR COMPLETELY LEAD FREE TYPE(INCLUDING FERRITE BODY & SOLDER)



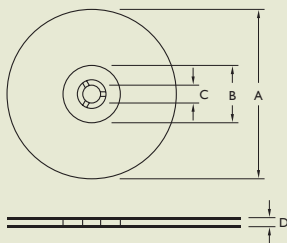
TAPE DIMENSIONS

Dimensions : mm



TYPE	TAPE DIMENSIONS						
	K0	D	E	W	P	P0	P2
SSL04LP	1.30	1.5	1.75	12	8	4	2

REEL DIMENSIONS



REEL DIMENSIONS				QUANTITY (PCS/REEL)	
A	B	C	D	178MM	330MM
330	100	13	13.4	-	3500
178	60	13	13.2	1000	-

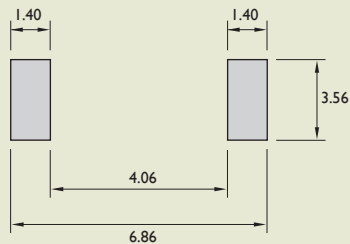
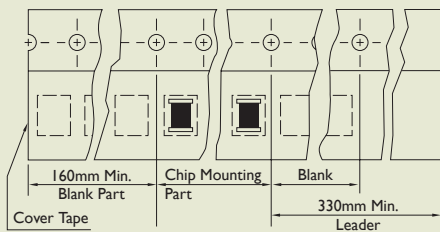
TAPE MATERIAL

Carrier Tape : Polystyrene

Cover Type : Polyethylene

RECOMMENDED PATTERN

Land Pattern



RECOMMEND SOLDERING CONDITIONS

for:CL/ CLH/ SQV/ SMD power inductors/ SMD Chip Beads/ SMD Filters, Transformers, Current Sensors

