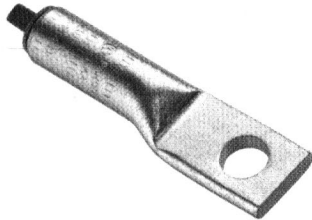


PANDUIT® Aluminum One-Hole (Type LAA) and Two-Hole Lugs (Type LAB)

Aluminum Lugs

For Use With Concentric, Compressed and Compact Aluminum Or Copper Cables

One-Hole Lug Type LAA

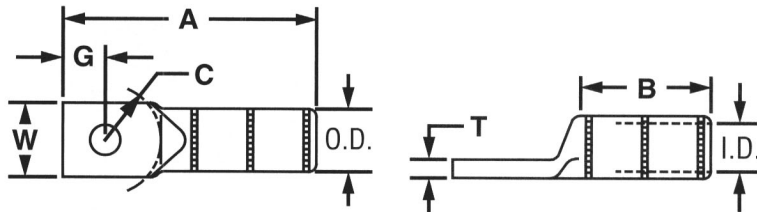


- Factory pre-filled with joint compound and sealed with easy pull-out end plug
- Color coded end plug to identify die set color
- Die set number and knurl bands marked on barrel
- U.L. Listed per 486B up to 35KV*
- AL9CU Temperature Rating

*Consult cable manufacturer for voltage stress relief instructions with applications greater than 2000 volts.



Part Number	Copper Conductor Size	Die Color & No.	Bolt Hole Size	Dimensions (In.)								Std. Pkg. Qty.
				Barrel		A	W	G	C	T	B	
				I.D.	O.D.							
LAA6-14-X LAA6-56-X	#6 AWG	Gray 29	1/4" 5/16"	.20 .20	.34 .34	2.20 2.20	.55 .55	.41 .41	.52 .52	.11 .11	1.00 1.00	10 10
LAA4-14-X LAA4-56-X LAA4-38-X	#4 AWG	Green 37	1/4" 5/16" 3/8"	.26 .26 .26	.47 .47 .47	2.05 2.23 2.23	.66 .69 .69	.34 .44 .44	.38 .56 .56	.19 .16 .16	1.04 1.04 1.04	10 10 10
LAA2-14-X LAA2-56-X LAA2-38-X	#2 AWG	Pink 42	1/4" 5/16" 3/8"	.31 .31 .31	.53 .53 .53	2.63 2.63 2.63	.75 .75 .75	.44 .44 .44	.69 .69 .69	.17 .17 .17	.98 .98 .98	10 10 10
LAA1-14-X LAA1-56-X LAA1-38-X	#1 AWG	Gold 45	1/4" 5/16" 3/8"	.31 .31 .31	.53 .53 .53	2.63 2.63 2.63	.75 .75 .75	.44 .44 .44	.69 .69 .69	.17 .17 .17	.98 .98 .98	10 10 10
LAA1/0-56-X LAA1/0-38-X LAA1/0-12-X	#1/0 AWG	Tan 50	5/16" 3/8" 1/2"	.39 .39 .39	.64 .64 .64	3.23 3.23 3.23	.88 .88 .88	.63 .63 .63	.63 .63 .63	.25 .25 .25	1.30 1.30 1.30	10 10 10
LAA2/0-38-5 LAA2/0-12-5	#2/0 AWG	Olive 54	3/8" 1/2"	.44 .44	.69 .69	3.23 3.23	.94 .94	.63 .63	.68 .68	.25 .25	1.31 1.30	5 5
LAA3/0-38-5 LAA3/0-12-5	#3/0 AWG	Ruby 60	3/8" 1/2"	.48 .48	.76 .76	3.48 3.48	1.06 1.06	.63 .63	.68 .68	.25 .25	1.50 1.50	5 5
LAA4/0-38-5 LAA4/0-12-5	#4/0 AWG	White 66	3/8" 1/2"	.55 .55	.88 .88	3.61 3.61	1.19 1.19	.63 .63	.68 .68	.31 .31	1.44 1.44	5 5
LAA250-38-5 LAA250-12-5	250 kcmil	Red 71	3/8" 1/2"	.59 .59	.91 .91	3.67 3.67	1.25 1.25	.63 .63	.69 .69	.29 .31	1.56 1.56	5 5
LAA300-38-2 LAA300-12-2	300 kcmil	Blue 76	3/8" 1/2"	.65 .65	1.01 1.01	4.05 4.05	1.38 1.38	.63 .63	.69 .69	.34 .34	2.19 2.19	2 2
LAA350-12-2	350 kcmil	Brown 87	1/2"	.72	1.11	4.30	1.50	.55	.69	.38	2.19	2
LAA400-58-2	400 kcmil	Green 94	5/8"	.76	1.19	4.92	1.63	.63	.63	.41	2.50	2
LAA500-12-2 LAA500-58-2	500 kcmil	Pink 99	1/2" 5/8"	.84 .84	1.32 1.32	5.56 5.56	1.75 1.75	.63 .63	.88 .88	.44 .44	2.94 2.94	2 2
LAA750-58-1	750 kcmil	Red 125	5/8"	1.03	1.59	6.55	1.75	.88	1.25	.53	3.31	1
LAA1000-58-1	1000 kcmil	Brown 161	5/8"	1.19	1.84	7.38	2.56	.88	1.25	.63	4.62	1



See tool chart on page 86 for additional information.

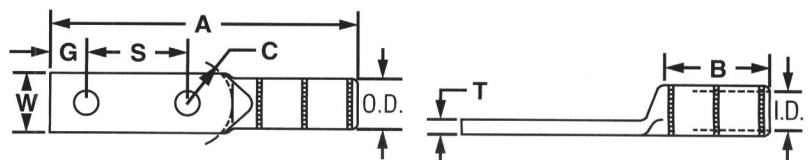
Two-Hole Lug Type LAB



- Factory pre-filled with joint compound and sealed with easy pull-out end plug
- Color coded end plug to identify die set color
- Die set number and knurl bands marked on barrel
- U.L. Listed per 486B up to 35KV*
- AL9CU Temperature Rating
- ◆ NEMA bolt hole sizes and spacing.
- *Consult cable manufacturer for voltage stress relief instructions with applications greater than 2000 volts.



Part Number	Copper Conductor Size	Die Color & No.	Bolt Hole Size	Dimensions (In.)									Std. Pkg. Qty.
				Barrel		A	W	G	S	C	T	B	
				I.D.	O.D.								
LAB1/0-38-X	#1/0 AWG	Tan 50	3/8"	.39	.64	5.39	.86	.63	1.75	.87	.23	1.50	10
LAB2/0-12-5	#2/0 AWG	Olive 65	1/2"	.44	.69	5.56	.94	.63	1.75	.87	.25	1.50	5
LAB3/0-12-5	#3/0 AWG	Ruby 60	1/2"	.48	.76	5.56	1.03	.63	1.75	.87	.27	1.50	5
LAB4/0-12-5	#4/0 AWG	White 66	1/2"	.55	.88	5.94	1.19	.63	1.75	1.00	.31	1.75	5
LAB250-12-5	250 kcmil	Red 71	1/2"	.59	.91	5.28	1.26	.63	1.75	.73	.33	2.00	5
LAB300-12-2	300 kcmil	Blue 76	1/2"	.65	1.01	6.56	1.34	.63	1.75	1.18	.34	2.25	2
LAB350-12-2	350 kcmil	Brown 87	1/2"	.72	1.11	6.07	1.52	.63	1.75	.73	.39	2.31	2
LAB400-12-2	400 kcmil	Green 94	1/2"	.76	1.19	6.94	1.66	.63	1.75	1.18	.39	2.50	2
LAB500-12-2	500 kcmil	Pink 99	1/2"	.84	1.32	6.80	1.62	.63	1.75	.77	.46	3.00	2
LAB600-12-2	600 kcmil	Black 106	1/2"	.92	1.44	7.56	1.73	.63	1.75	1.25	.50	3.00	2
LAB750-12-1	750 kcmil	Red 125	1/2"	1.03	1.59	7.31	1.69	.63	1.75	.74	.57	3.44	1
LAB800-12-1	800 kcmil	Gray 140	1/2"	1.05	1.66	8.31	1.75	.63	1.75	1.24	.59	3.38	1
LAB1000-12-1	1000 kcmil	Brown 161	1/2"	1.19	1.84	9.73	2.56	.63	1.75	1.24	.63	4.50	1



See tool chart on page 86 for additional information.