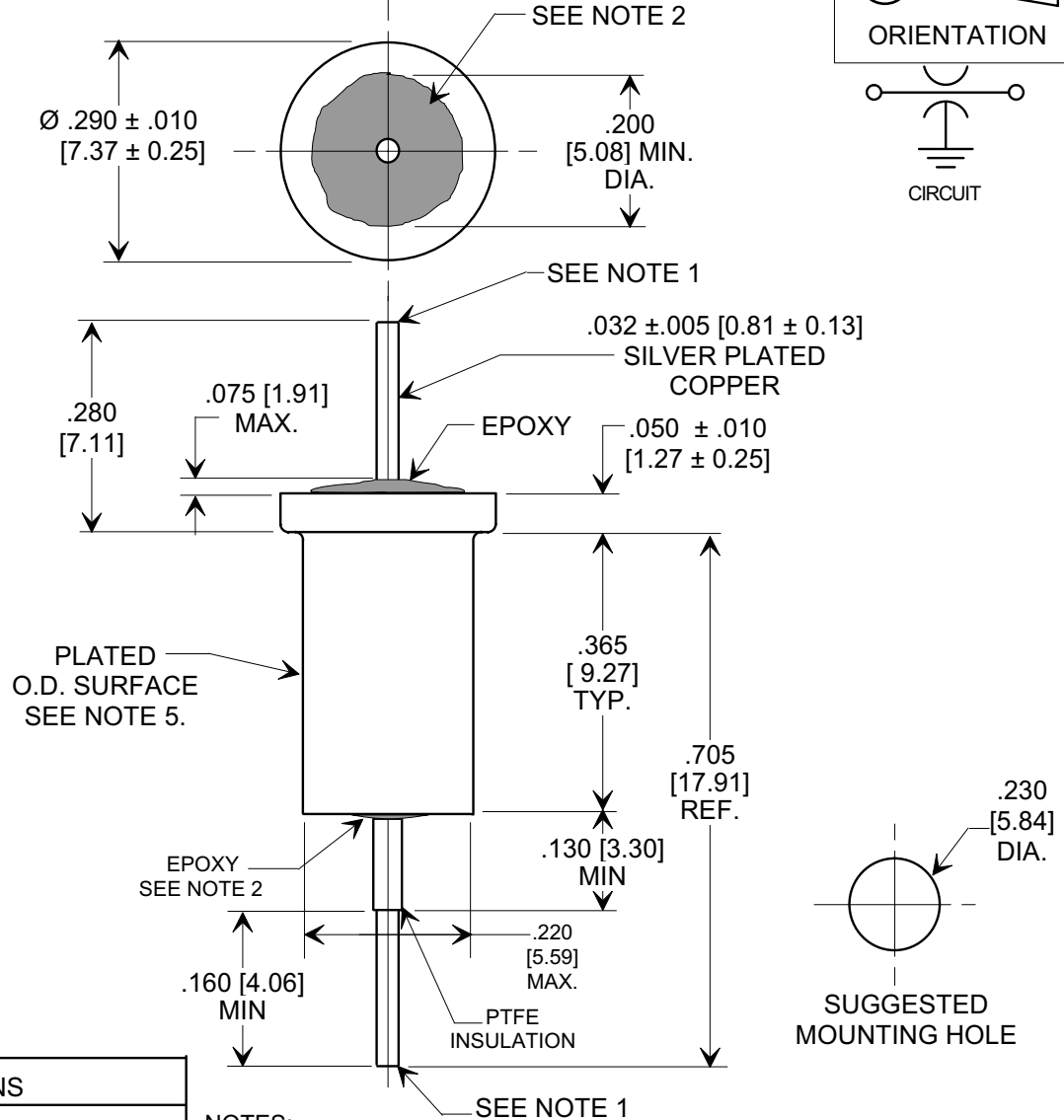
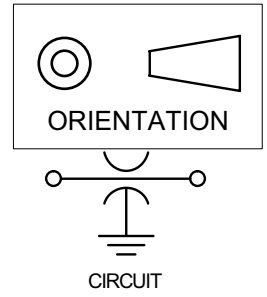


**MARKETING SALES DRAWING**  
**DIMENSIONS IN INCHES - DO NOT SCALE THIS DRAWING**  
**DIMENSIONS IN METRIC - [ ]**

This drawing is the property of Tusonix, Inc., and may not be used, reproduced, published or disclosed to others without expressed authorization by Tusonix Inc.

**Electrical Testing  
per Tusonix standard  
test plans and Mil-Std-202  
Test Methods.**



**SPECIFICATIONS**

STYLE	2470
CAP. VALUE:	3500 pF
CAP. TOL.:	± 20%
D.F.:	4% MAX.
RATING:	250 VAC @ +85°C
OPERATING RANGE:	-55°C TO +85°C
DWV (25°C):	1500 VAC
I.R.:	10 G Ω MIN.
IDC:	10 A

**NOTES:**

1. ENDS OF LEADS MAY SHOW EXPOSED COPPER.
2. EPOXY COATED INSULATION BANDS: COVERAGE OF TOP AS SHOWN, COVERAGE OF BOTTOM .100" [2.54] DIA. MIN. (MAY OVERLAP ONTO OD SURFACE .020" [0.51] MAX.)
3. COMMERCIAL PART, MANUFACTURED AND INSPECTED TO APPLICABLE REQUIREMENTS OF U.L. STANDARD 1283.
4. TUSONIX STANDARD PART NUMBER: 2470-001.  
TUSONIX RoHS COMPLIANT PART NUMBER: 2470-001 LF.  
CUSTOMER MUST SPECIFY STANDARD OR RoHS PART NUMBER WHEN ORDERING.
5. PLATED DIELECTRIC FINISH: STANDARD PART #: 60/40 SOLDER PLATED.  
RoHS PART #: TIN PLATED.
6. PART MARKING: STANDARD PART: NO MARKING. RoHS PART: GREEN INK DOT.

X-2015 Rev-0

<b>REVISION RECORD</b>	Original Release	WAS SK 8218-001. SM 03-08-05	0	<b>20050307-2-04</b>	ADDED NOTES 4-6. RESCALED DRAWING. S.M. 02-02-06	<b>20060109-1-03</b>	<b>1</b>
	C.O.						

<b>--TOLERANCES--</b> Unless Otherwise Specified		Title <b>SHOULDER FEED-THRU</b>	
DECIMAL ± .031 [0.79]		Drawn	L.E. 09-13-04
ANGLES ±		Scale	4 X
<b>TUSONIX</b> TUCSON, ARIZONA		Approved	B.Mc. 09-13-04
		<b>A</b>	<b>2470-001</b>