

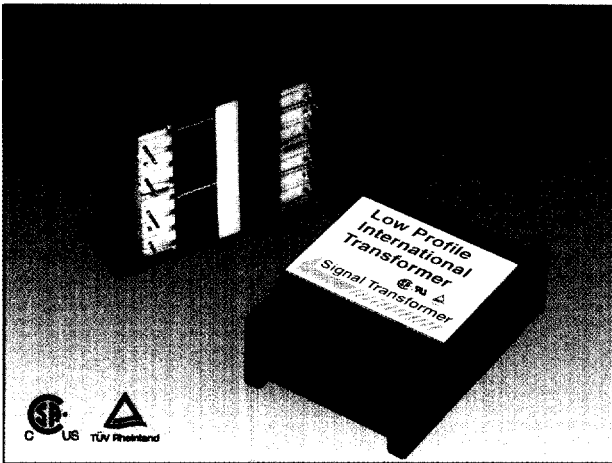
Low Profile International Transformers Printed Circuit Mount-2.5, 6, and 9 VA Sizes

BUY DIRECT

24 HOURS
HOTLINE

TEL: (516) 239-5777
FAX: (516) 239-7208

Direct Plug-in Replacement for Industry Standard Pin Configuration on Low Profile Transformers.



New Features and Benefits - All AT NO ADDITIONAL COST

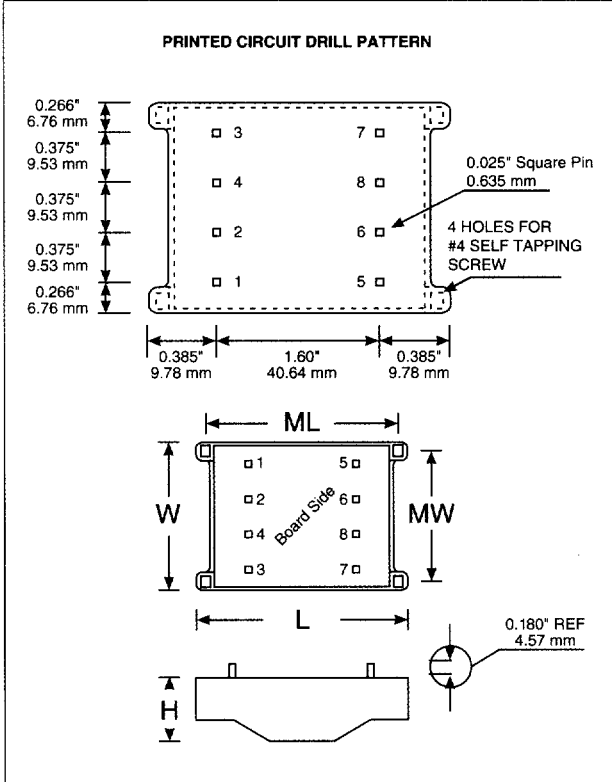
- **Hermetically Sealed** – For wave soldering processes
- **Rigid Pin Construction** – For easier board insertion and higher reliability
- **Mounting Holes Provided** – For greater resistance to shock and vibration
- **Improved Electrical Characteristics** – i.e. regulation, temperature rise, efficiency, etc.

General Specifications

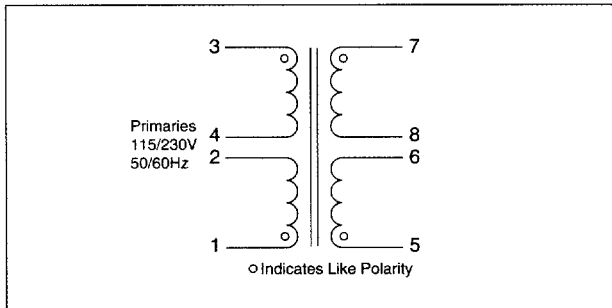
- **Power** – 2.5 VA to 9 VA
- **Dielectric Strength** – 4000 VRMS Hipot
- **Primaries** – Dual primaries (115/230 V - 50/60 Hz)
- **Secondaries** – Series or parallel secondaries
- **Electrostatic Shield** – Not necessary; split bobbin construction
- **Magnetic Field** – Reduced magnetic radiation
- **Height** – .72 to 1.08 inches high
- **Insulation** – Class B insulation (130°C)

Agency Standards

- CSA-NRTL/C-22.2#66 ANSI/UL STD No. 506
- TUV RHEINLAND EN60950/IEC950



Part No.	VA (Size)	Secondary RMS Rating	
		Series	Parallel
10-250-LPI	2.5	10 VCT @ 250 mA	5 V @ 500 mA
12-200-LPI	2.5	12.6 VCT @ 200 mA	6.3 V @ 400 mA
16-150-LPI	2.5	16 VCT @ 150 mA	8 V @ 300 mA
20-125-LPI	2.5	20 VCT @ 125 mA	10 V @ 250 mA
24-100-LPI	2.5	24 VCT @ 100 mA	12 V @ 200 mA
30-85-LPI	2.5	30 VCT @ 85 mA	15 V @ 170 mA
34-75-LPI	2.5	34 VCT @ 75 mA	17 V @ 150 mA
40-60-LPI	2.5	40 VCT @ 60 mA	20 V @ 120 mA
56-45-LPI	2.5	56 VCT @ 45 mA	28 V @ 90 mA
230-10-LPI	2.5	230 VCT @ 10 mA	115 V @ 20 mA
10-600-LPI	6	10 VCT @ 600 mA	5 V @ 1.2 A
12-450-LPI	6	12.6 VCT @ 450 mA	6.3 V @ 900 mA
16-350-LPI	6	16 VCT @ 350 mA	8 V @ 700 mA
20-300-LPI	6	20 VCT @ 300 mA	10 V @ 600 mA
24-250-LPI	6	24 VCT @ 250 mA	12 V @ 500 mA
30-200-LPI	6	30 VCT @ 200 mA	15 V @ 400 mA
34-170-LPI	6	34 VCT @ 170 mA	17 V @ 340 mA
40-150-LPI	6	40 VCT @ 150 mA	20 V @ 300 mA
56-100-LPI	6	56 VCT @ 100 mA	28 V @ 200 mA
230-25-LPI	6	230 VCT @ 25 mA	115 V @ 50 mA
10-900-LPI	9	10 VCT @ 900 mA	5 V @ 1.8 A
12-725-LPI	9	12.6 VCT @ 725 mA	6.3 V @ 1.45 A
16-560-LPI	9	16 VCT @ 560 mA	8 V @ 1.12 A
20-450-LPI	9	20 VCT @ 450 mA	10 V @ 900 mA
24-375-LPI	9	24 VCT @ 375 mA	12 V @ 750 mA
30-300-LPI	9	30 VCT @ 300 mA	15 V @ 600 mA
34-265-LPI	9	34 VCT @ 265 mA	17 V @ 530 mA
40-225-LPI	9	40 VCT @ 225 mA	20 V @ 450 mA
56-160-LPI	9	56VCT @ 160mA	28V @ 320mA
230-40-LPI	9	230VCT @ 40mA	115V @ 80mA



VA (Size)	L	W	H	ML	MW	Wgt
2.5	2.370"	1.658"	0.720"	2.19"	1.50"	0.276 lbs
	60.2 mm	42.1 mm	18.3 mm	55.6 mm	38.1 mm	0.125 kg
6	2.370"	1.658"	0.895"	2.19"	1.50"	0.390 lbs
	60.2 mm	42.1 mm	22.7 mm	55.6 mm	38.1 mm	0.177 kg
9	2.370"	1.658"	1.080"	2.19"	1.50"	0.510 lbs
	60.2 mm	42.1 mm	27.4 mm	55.6 mm	38.1 mm	0.231 kg

Signal Transformer

CALL: 516-239-5777 • FAX: (24hrs) 516-239-7208

Website: <http://www.signaltransformer.com>

500 Bayview Avenue, Inwood, New York 11096